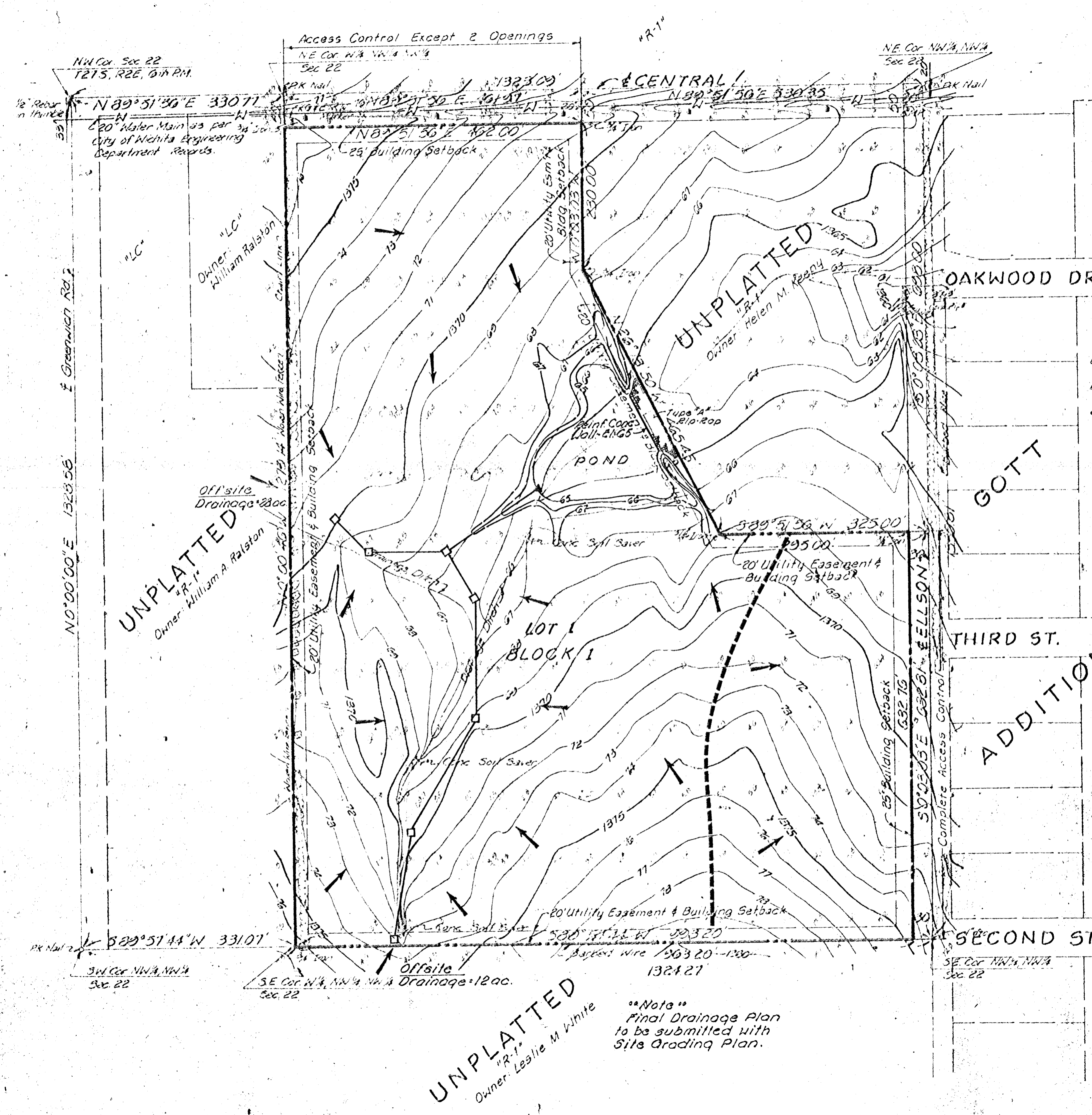


DRAINAGE CONCEPT OF THE FOUNTAINS



SCALE 1"=100
April 3, 1981

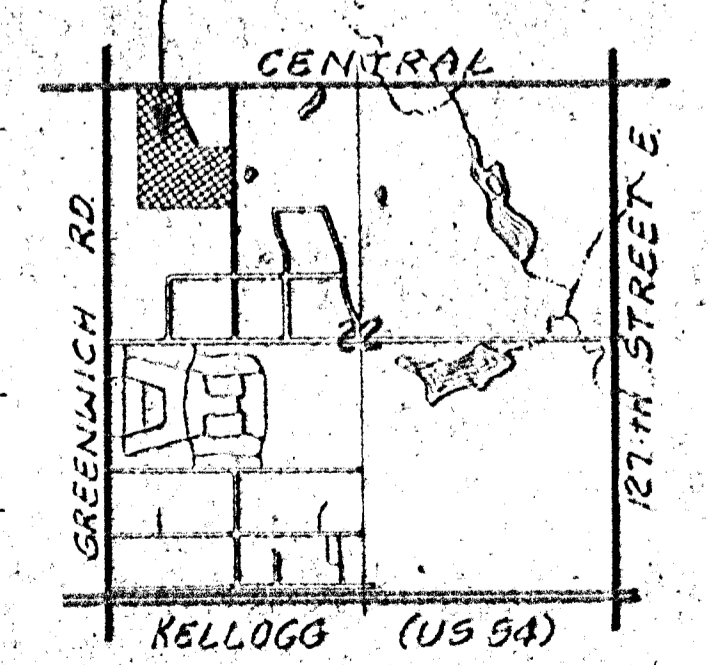
- Irons Found
- Irons Set
- ▽ Power Pole

B.M. (County) - Top of Iron in thumb @ Intersection of Central & Greenwich. El. 1376.44
 B.M. "A" Railroad Spike in Power Pole 482' East of NW Cor. Parcel. El. 1373.42
 B.M. "B" 3-40d Nails in base of 10' Elm. Tree 1330' South & 482' East of the NW Cor. of Parcel. El. 1379.17
 ONNER

ENGINEER:
 Professional Engineering Consultants, P.A.
 1440 E. English
 Wichita, Kansas 67211

UTILITIES:
 Storm Sewer - none
 Sanitary Sewer - none
 Water - as shown
 Electric - power pole location as shown
 Telephone -
 Gas -

- ***LEGEND***
- Inlet Location
 - ▲ Outlet Location
 - Storm Water Sewer
 - Drainage Arrow
 - Drainage Area Limits
- Date of Topo - May 20, 1980
 "The Fountains"



VICINITY MAP

UNPLATTED
 "R-1"
 Owner: Leslie M. White

Note
 Final Drainage Plan
 to be submitted with
 Site Grading Plan.