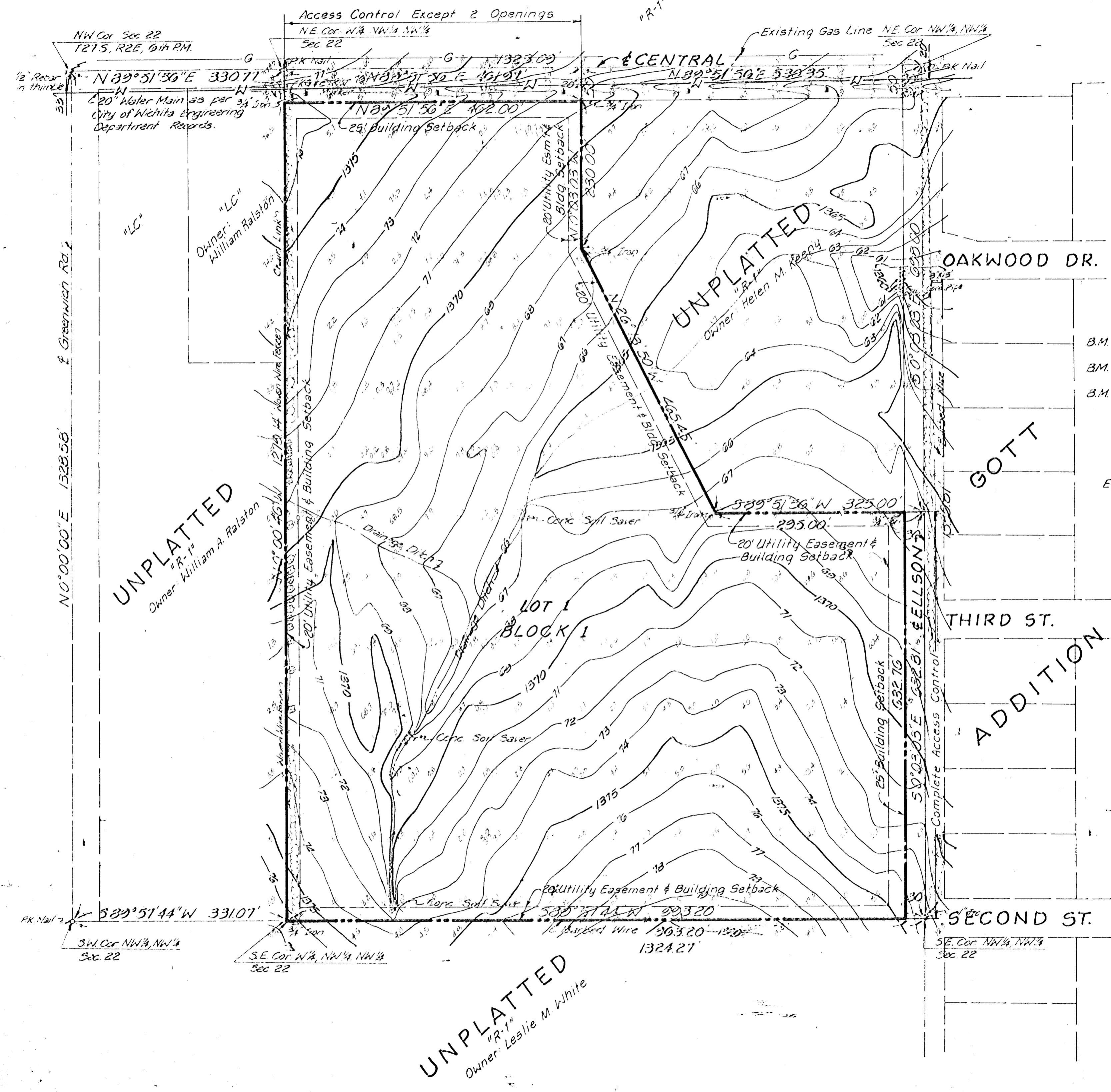


# PRELIMINARY PLAT OF THE FOUNTAINS



SCALE: 1"=100  
March 27, 1981

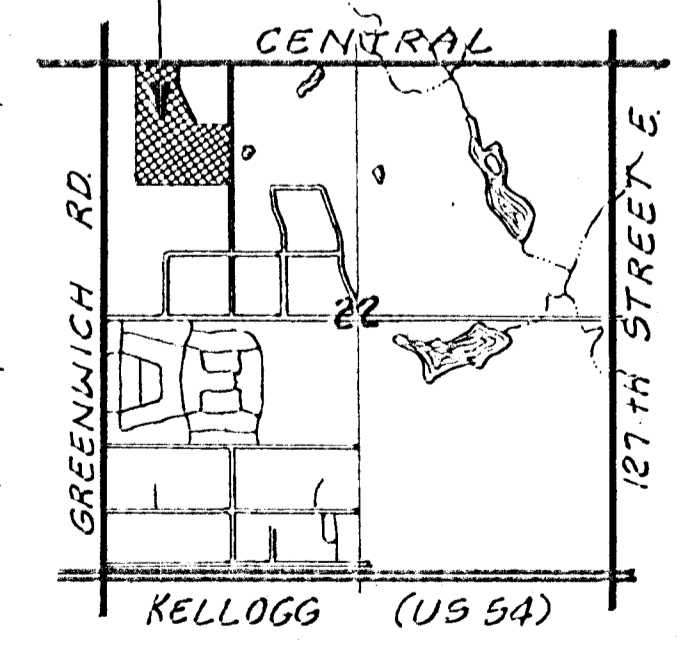
- Irons Found
- Irons Set
- Power Pole

B.M. (County) - Top of Iron in thumb's @ Intersection of Central & Greenwich El. 1370.44  
 B.M. "A" - Railroad Spike in Power Pole 482' East of NW Cor. Parcel El. 1373.42  
 B.M. "B" - 3-40d Nails in base of 10' Elm Tree 1330' South & 482' East of the NW Cor. of Parcel El. 1379.11  
 OWNER: Amarado Investment Company, Inc.  
 Wichita, Kansas

ENGINEER:  
 Professional Engineering Consultants, P.A.  
 1440 E. English  
 Wichita, Kansas 67211

UTILITIES:  
 Storm Sewer - none  
 Sanitary Sewer - none  
 Water - as shown  
 Electric - power pole location as shown  
 Telephone - Available  
 Gas - as shown

Date of Topo - May 29, 1980  
 "The Fountains"



VICINITY MAP