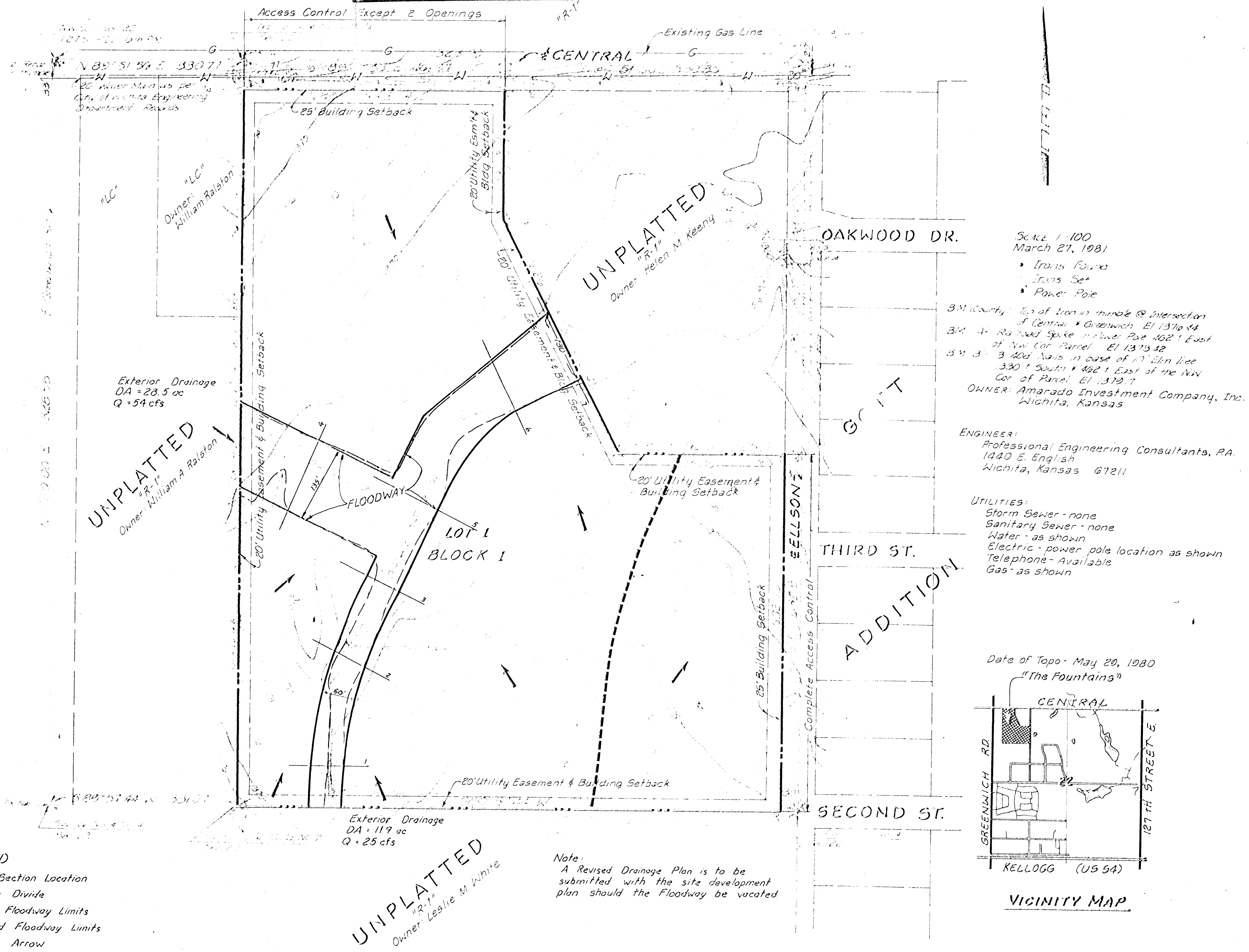


# DRAINAGE PLAN

# THE FOUNTAINS

NEW SHEET - DATE 4-27-81  
VOID PREVIOUS ISSUE



SCALE 1" = 100'  
March 27, 1981

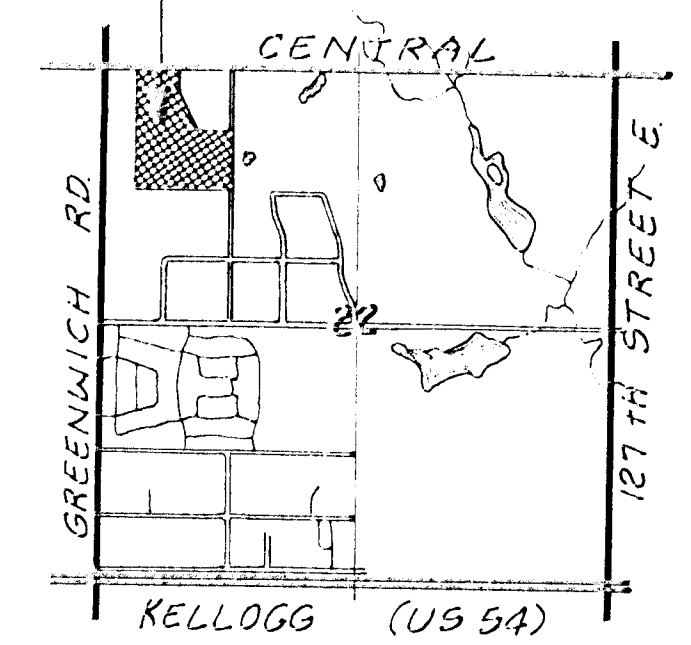
- Iron Found
- Iron Set
- Power Pole

3/4" County Top of Iron in middle @ Intersection of Central & Greenwich El 1371.44  
3/4" 1" Railroad Spike in Power Pole 462' East of NW Cor. Parcel El 1373.42  
3/4" 3" 3 1/2" Nails in base of 10' Elm tree 330' South & 462' East of the NW Cor. of Parcel El 1372.7  
OWNER: Amarado Investment Company, Inc. Wichita, Kansas

ENGINEER:  
Professional Engineering Consultants, P.A.  
1440 E. English  
Wichita, Kansas 67211

UTILITIES:  
Storm Sewer - none  
Sanitary Sewer - none  
Water - as shown  
Electric - power pole location as shown  
Telephone - Available  
Gas - as shown

Date of Topo - May 20, 1980  
"The Fountains"



VICINITY MAP

- LEGEND**
- Cross Section Location
  - - - Drainage Divide
  - Defined Floodway Limits
  - - - Calculated Floodway Limits
  - Drainage Arrow

Note:  
A Revised Drainage Plan is to be submitted with the site development plan should the Floodway be vacated

UNPLATTED  
Owner: Leslie M. White