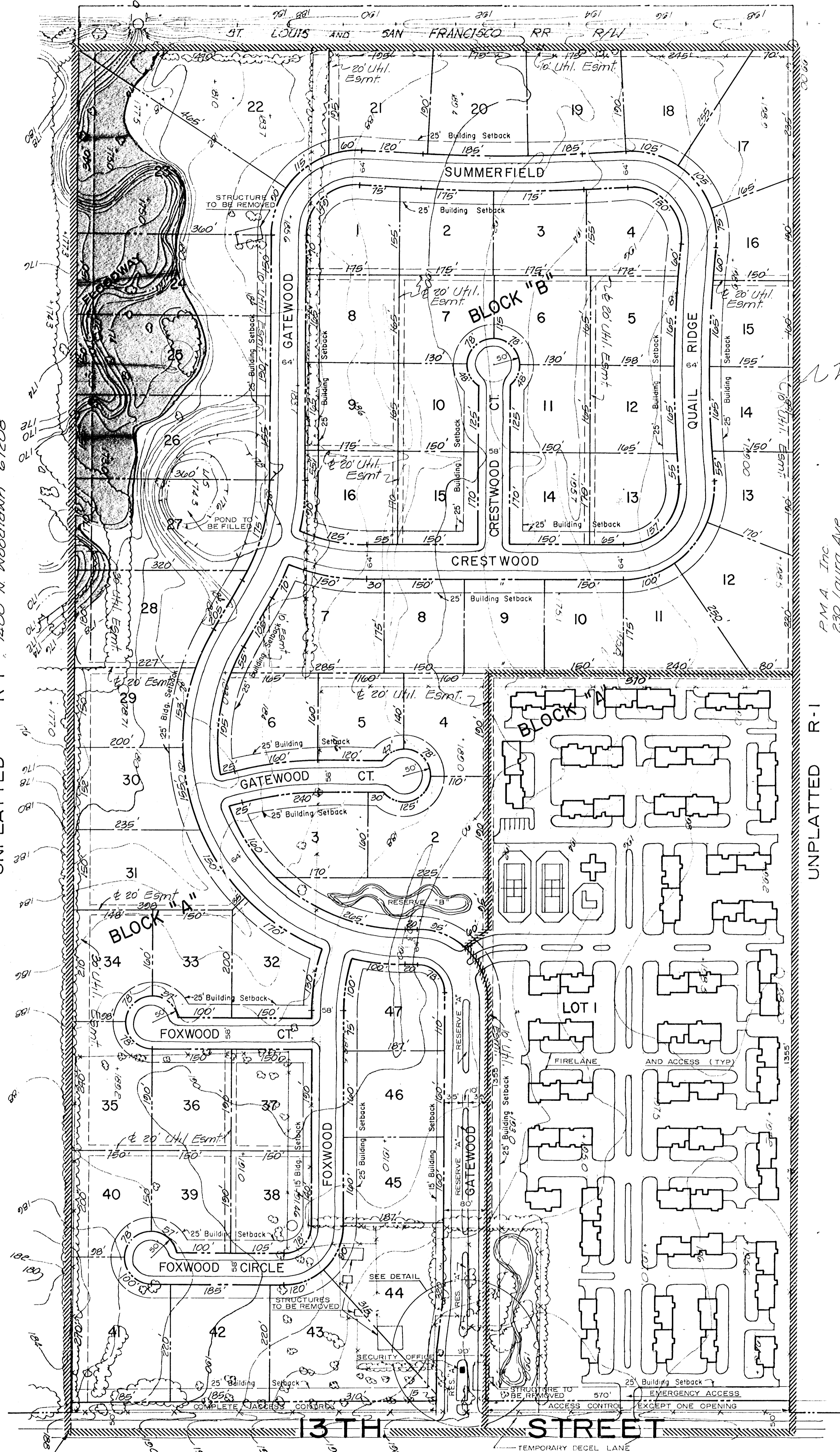


UNPLATTED R-1

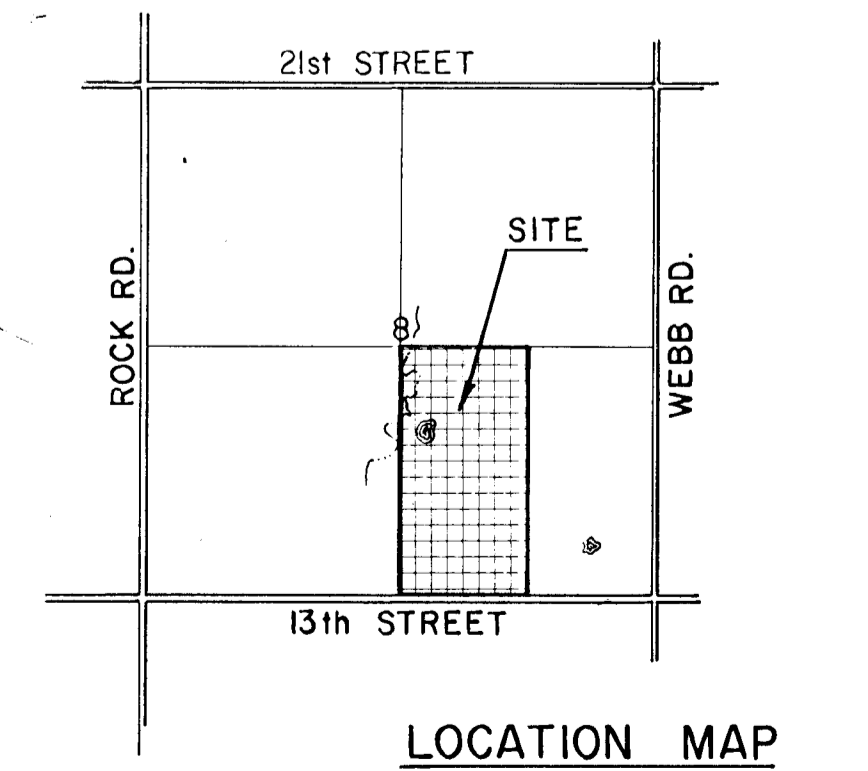
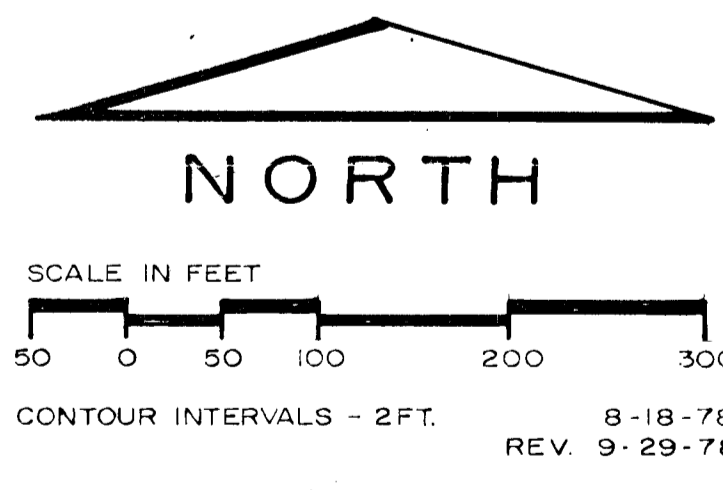
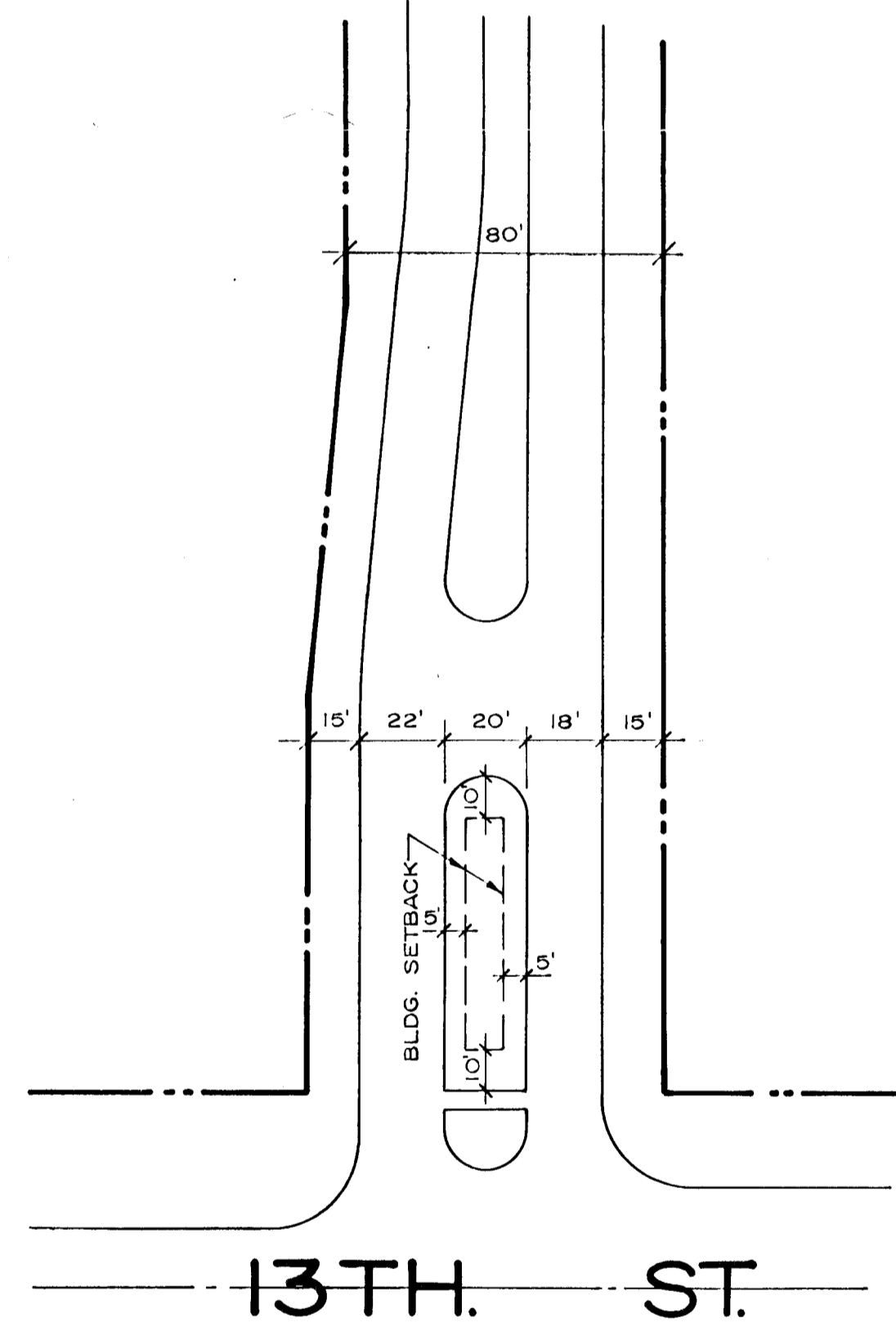
Wilson Estates & Louise W. Bradley  
% 826 Union Center Bldg 67202

Charles Koch  
Highland House  
1400 N. Woodlawn 67208

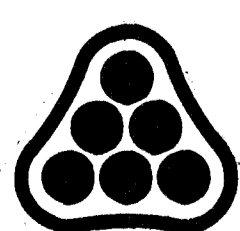
P.M.A. Inc.  
230 Laura Ave  
Rm 107 67211



Street Names  
May Change



PRELIMINARY PLAT OF  
**COUNTRY PLACE ESTATES**



PROFESSIONAL ENGINEERING CONSULTANTS, P.A.  
 ENGINEERS  
 WICHITA, KANSAS

Rounds & Porter Lumber Co., Inc.  
 430 N. Waco 67202

Owner: Country Club Estates,  
 a Kansas Partnership  
 P.O. Box 4048  
 Wichita, Kansas 67204

1978  
 12/14/78  
 12/15/78  
 12/16/78  
 12/17/78  
 12/18/78  
 12/19/78  
 12/20/78  
 12/21/78  
 12/22/78  
 12/23/78  
 12/24/78  
 12/25/78  
 12/26/78  
 12/27/78  
 12/28/78  
 12/29/78  
 12/30/78  
 12/31/78