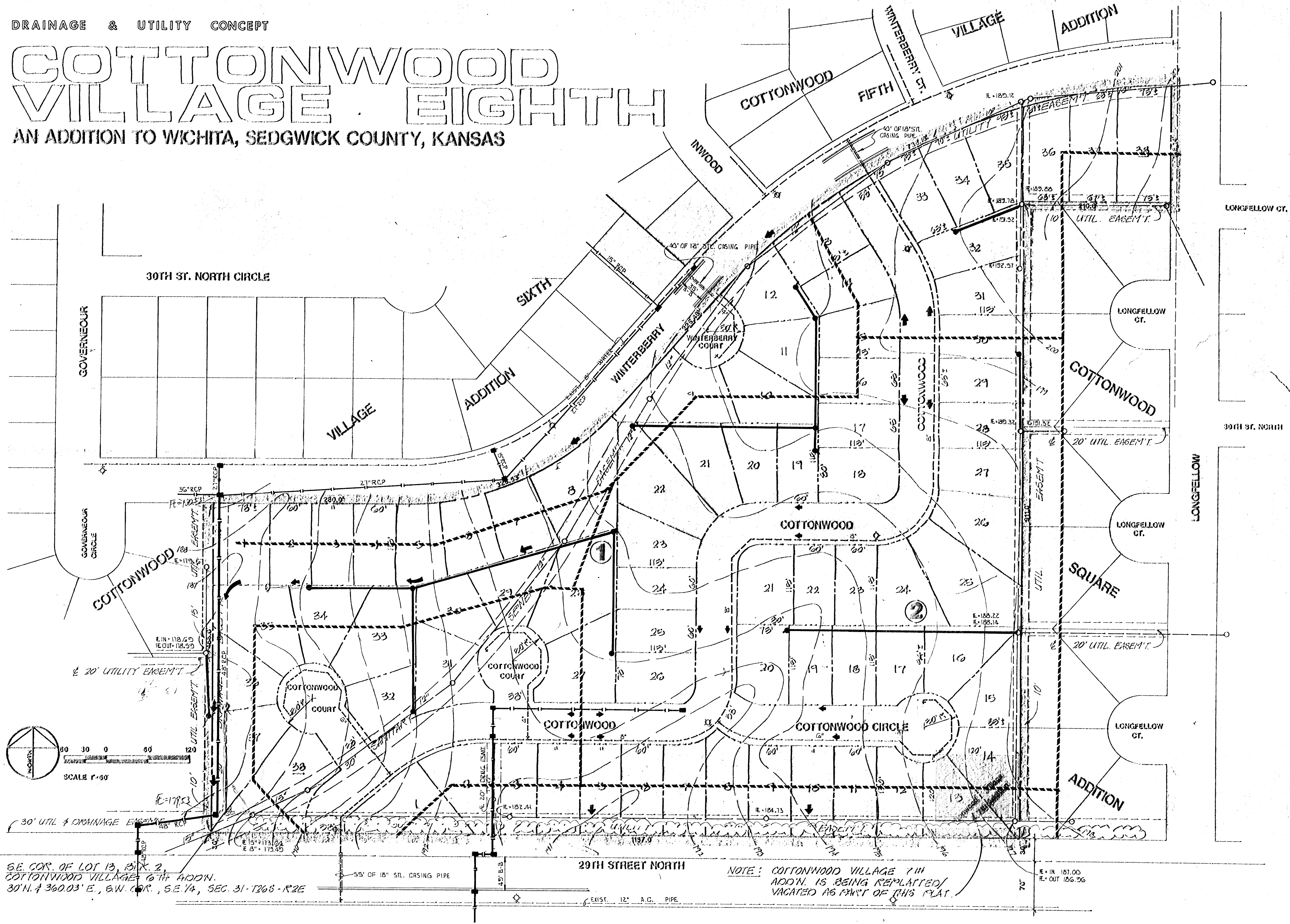


DRAINAGE & UTILITY CONCEPT

COTTONWOOD VILLAGE EIGHTH

AN ADDITION TO WICHITA, SEDGWICK COUNTY, KANSAS



SE. COR. OF LOT 13, B1X 2,
COTTONWOOD VILLAGE 6TH ADDN.
30°N. & 360.03' E., S.W. COR., S.E. 1/4, SEC. 31-T268-R2E

NOTE: COTTONWOOD VILLAGE 7TH
ADDN. IS BEING REPLATTED/
VACATED AS PART OF THIS PLAT.

POS

PLANNING DEVELOPMENT SERVICES, INC.
1000 N. W. 10th St., Suite 200, Wichita, KS 67202
Phone: 316-261-1111 Fax: 316-261-1112

LANDMARK COMMUNITIES, INC.
5500 North Rock Road, Bldg. #100 Wichita, Kansas 67226

OWNER/DEVELOPER:
Landmark

DRAWN: JULY 1987
CHECKED: [Signature]
REVISED: SEPT. 1987
DATE: OCT. 1987

SHEET 1 OF 4