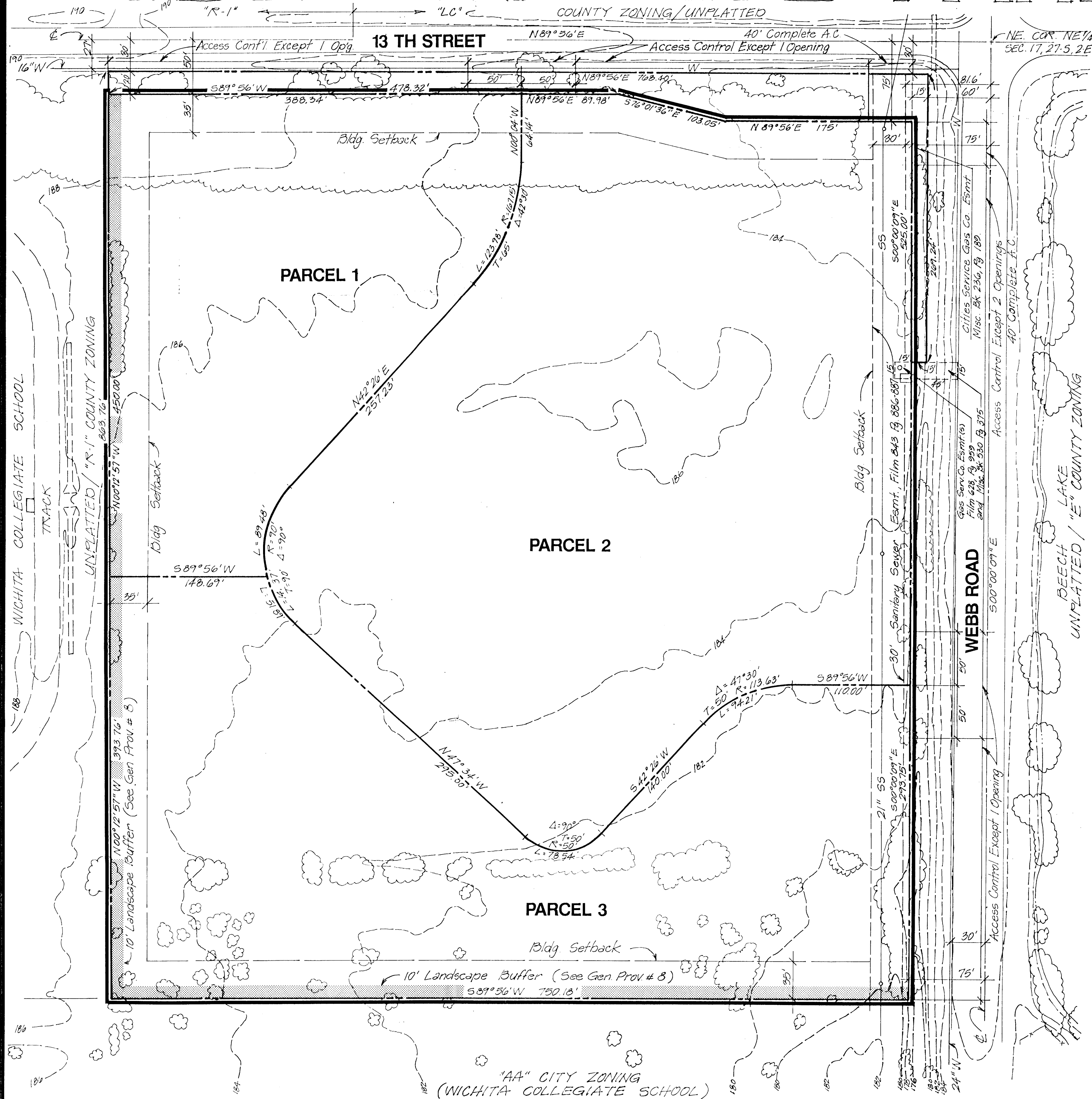
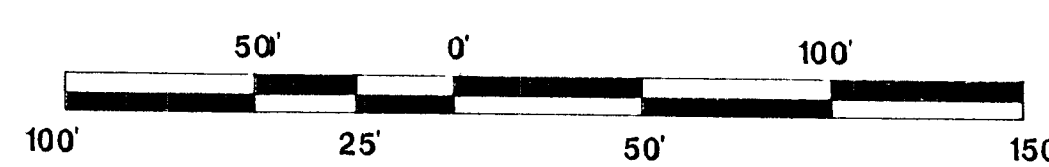
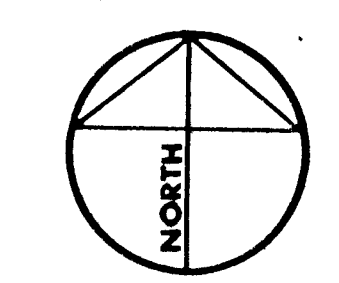


COUNTRY CLUB PARK — C.U.P. —



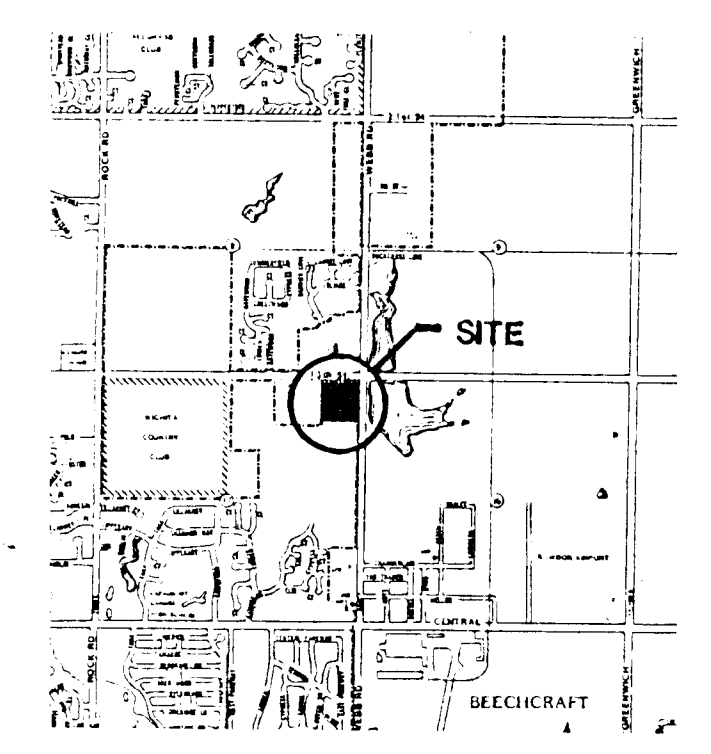
GENERAL PROVISIONS

PARCEL DESCRIPTIONS



SCALE 1" = 50'

TOPOGRAPHY - JUNE, 1985



AREA MAP

CONTOUR INTERVAL @ 2 FEET



POS
INCORPORATED
PLANNING DEVELOPMENT SERVICES, INC.
River Park Place 727 North Waco, Suite 125
Wichita, KS 67203 316-262-0451 Telex 417-375 POS WIC

COUNTRY CLUB PARK - COMMERCIAL COMMUNITY UNIT PLAN

PORTION OF NE 1/4, SECTION 17, T-27-S, R-2-E

WICHITA, SEDGWICK COUNTY, KANSAS

OWNER / DEVELOPER: COUNTRY CLUB PARK L.P. 9920 E. HARRY WICHITA, KANSAS 67207 (316) 686-1222

DRAWN APRIL 1988
CHECKED
REVISED

SHEET **1** OF ONE