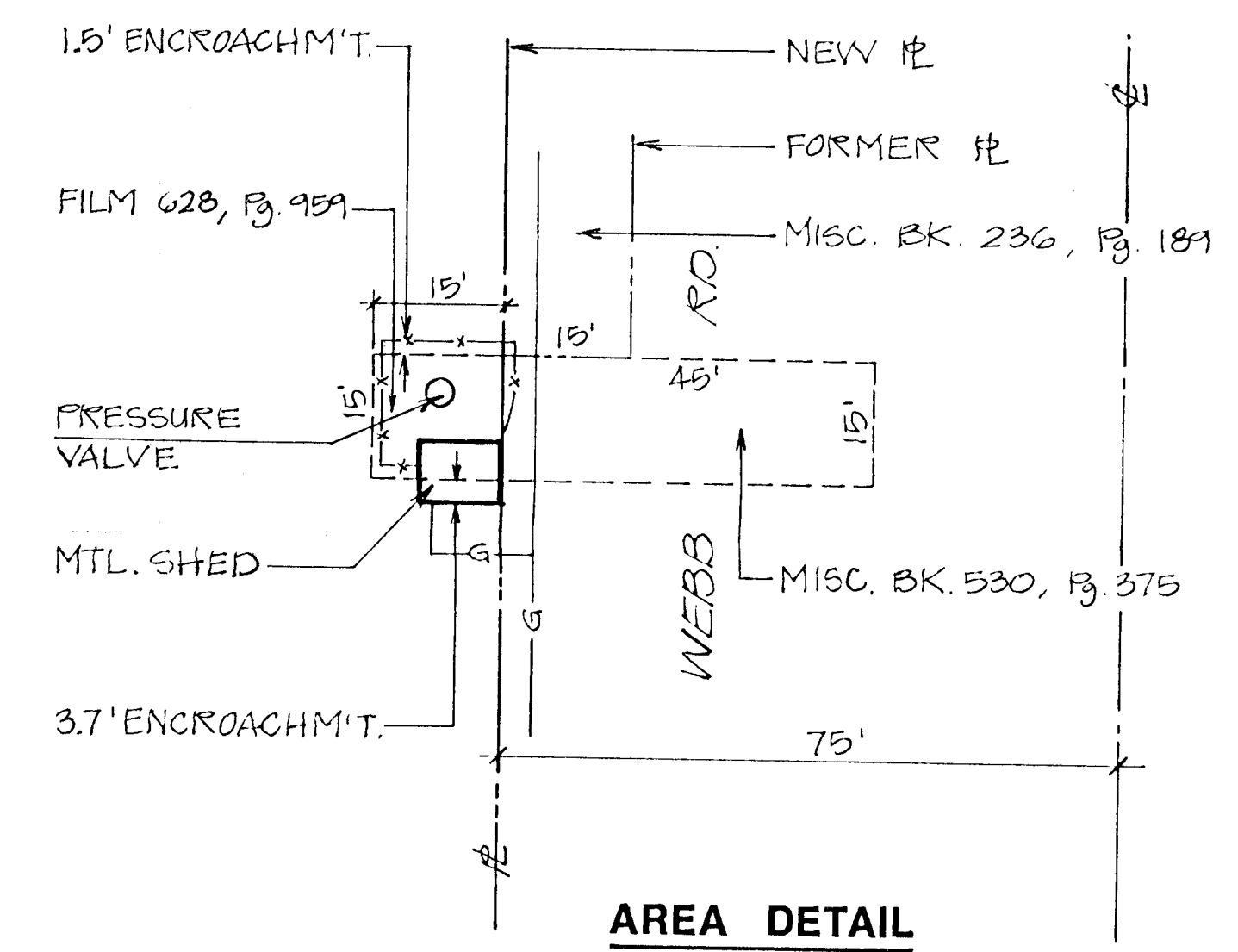
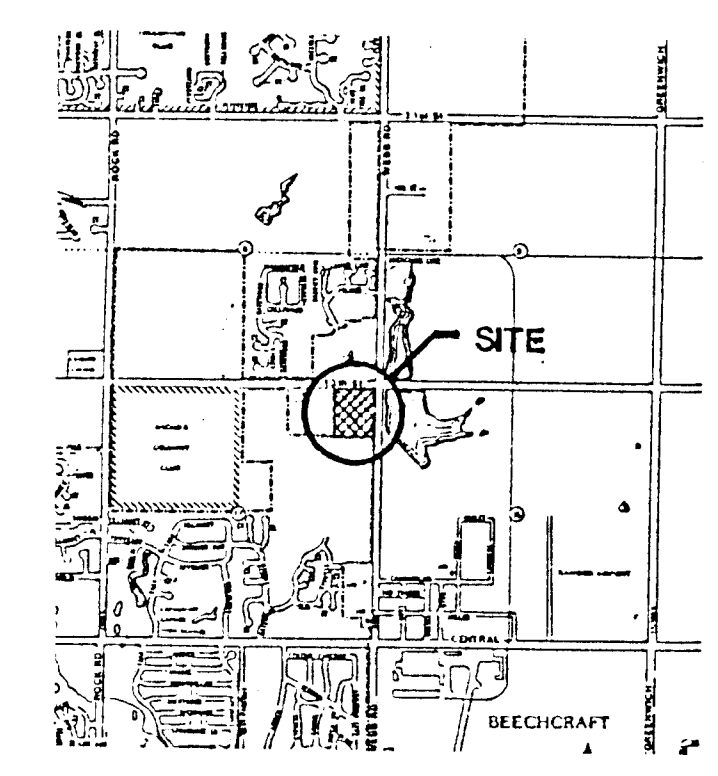


PRELIMINARY PLAT COUNTRY CLUB PARK ADDITION

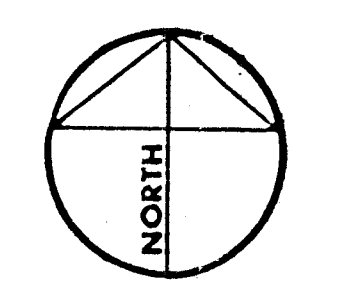
WICHITA, SEDGWICK COUNTY, KANSAS



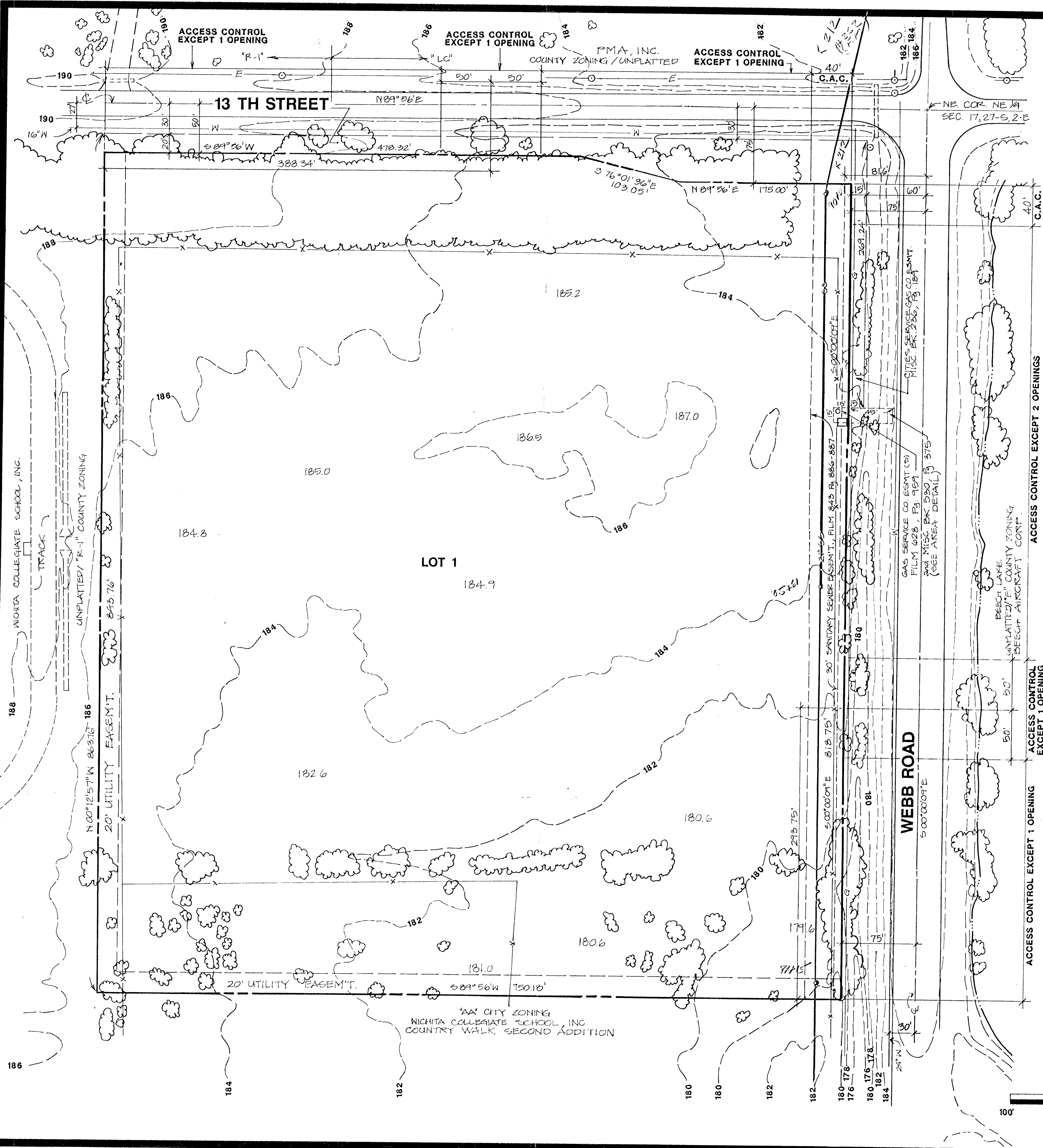
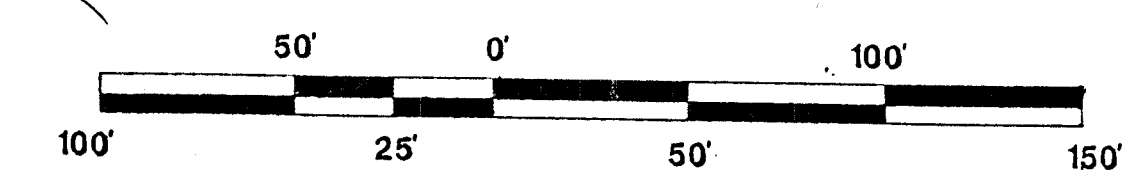
NOTES:
 Associated applications are Zone Case Z-2923, and Country Club Park Commercial Community Unit Plan (DP-186).
 There are 15.0 +/- gross acres, and 14.43 +/- net acres in subject plat.
 Photogrammetry / topography by Miles Air Photo Survey, 1221 Thurston St., Manhattan, Ks. 66502, (913) 539-3130, File M-205, P-118, June 1985.
 Bench Mark: Chiseled square at SW corner of RCBC on the west side of Webb Road, 1400' +/- south of 13th St., Elev. 170.14 City datum.
 A Drainage Concept Plan has been prepared by Baughman Co., P.A., Surveying Engineering.
 Building setbacks as per the Country Club Park Commercial C.U.P. (DP-186).



AREA MAP
 TOPOGRAPHY - JUNE, 1985
 CONTOUR INTERVAL @ 2 FEET



SCALE 1" = 50'



POS
 INCORPORATED
 PLANNING DEVELOPMENT SERVICES, INC.
 924 N. Main
 Wichita, KS 67203
 (316) 252-0451

**PRELIMINARY PLAT OF COUNTRY CLUB PARK ADDITION
 WICHITA, SEDGWICK COUNTY, KANSAS
 OWNER/DEVELOPER: COUNTRY CLUB PARK ASSOCIATES L.P.
 9820 E. HARRY WICHITA, KANSAS 67207 (316) 686-1222**

DRAWN
 CHECKED
 REVISED

SHEET
1
 OF
 ONE