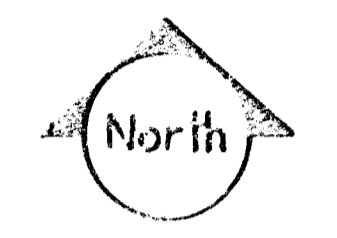


31ST STREET

COTTONWOOD 4TH ADDITION

31ST STREET

30TH STREET



Scale: 1"=100'

Drainage Area East of Rock Road (Future Development)
10.1 Acres
C=0.7
Tc=15.0 min
Ic=3.32 in/hr
Qc=3.7 cfs

Drainage Area "G"
19.3 Acres
C=0.5
Tc=23 min
Ic=3.43 in/hr
I100=7.60 in/hr
Qc=33.1 cfs
Q100=73.3 cfs

Drainage Area "J"
1.0 Acres
C=0.7
Tc=23 min
Ic=3.43 in/hr
I100=7.60 in/hr
Qc=2.4 cfs
Q100=5.3 cfs

Drainage Area "D"
22.2 Acres
C=0.5
Tc=27 min
Ic=3.13 in/hr
I100=7.14 in/hr
Qc=35.7 cfs
Q100=81.4 cfs

Drainage Area "E"
2.0 Acres
C=0.7
Tc=28 min
Ic=3.05 in/hr
I100=7.04 in/hr
Qc=7.2 cfs
Q100=14.3 cfs

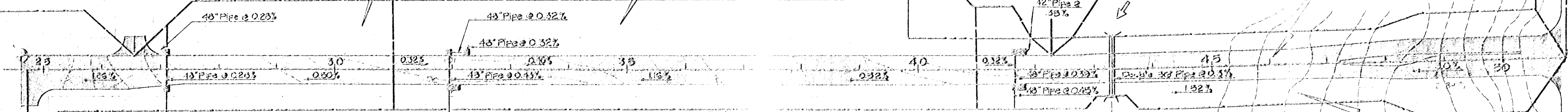
19.0 Accumulated Area
C=0.67
Tc=18 min
Ic=3.37 in/hr
Qc=106.5 cfs

Drainage Area "C-V"
1.5 Acres
C=0.7
Tc=24 min
Ic=3.33 in/hr
I100=7.45 in/hr

Drainage Area "K"
0.6 Acres
C=0.7
Tc=23 min
Ic=3.43 in/hr
I100=7.60 in/hr
Qc=1.4 cfs
Q100=3.2 cfs

Drainage Area "F"
1.5 Acres
C=0.7
Tc=28 min
Ic=3.05 in/hr
I100=7.04 in/hr
Qc=7.2 cfs
Q100=14.3 cfs

Drainage Area "C-II"
1.5 Acres
C=0.7
Tc=25 min
Ic=3.32 in/hr
I100=7.36 in/hr
Qc=3.7 cfs
Q100=8.2 cfs



GOVERNOUR

WATERFORD LAKES

WATERFORD NORTH

TEMPORARY CHANNEL

SECTION A-A

DRAINAGE CONCEPT PLAN FOR EASTRIDGE		Drawn by
		Checked by
Van Doren - Hazard - Stallings Architects • Engineers • Planners Topeka • Wichita • Minneapolis		Job no.
		Sheet 1 of 1