

SANITARY SEWER PLAN

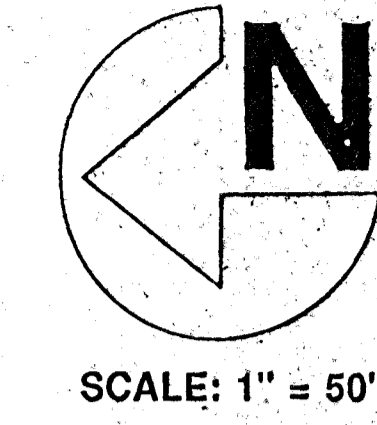
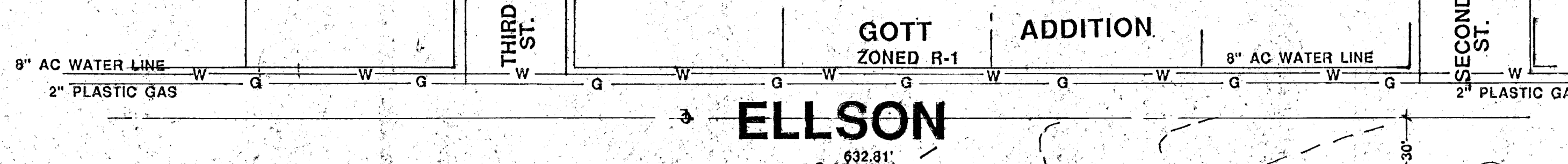
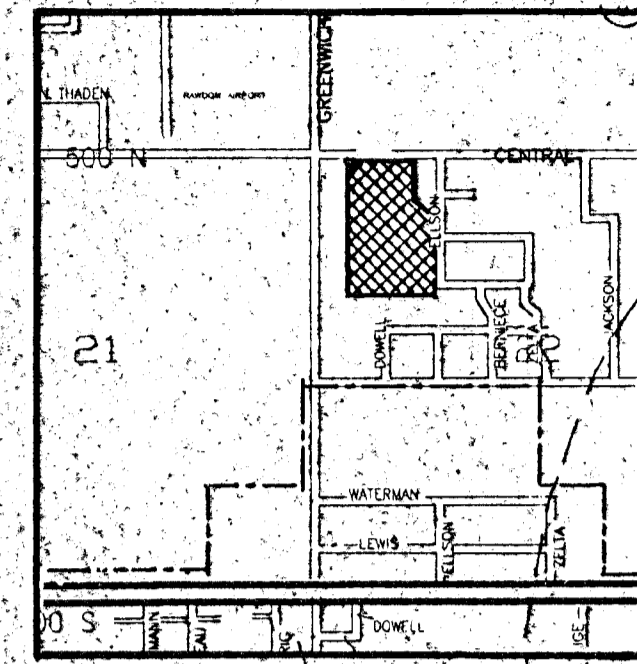
DATE: 3-26-96

Prepared by:

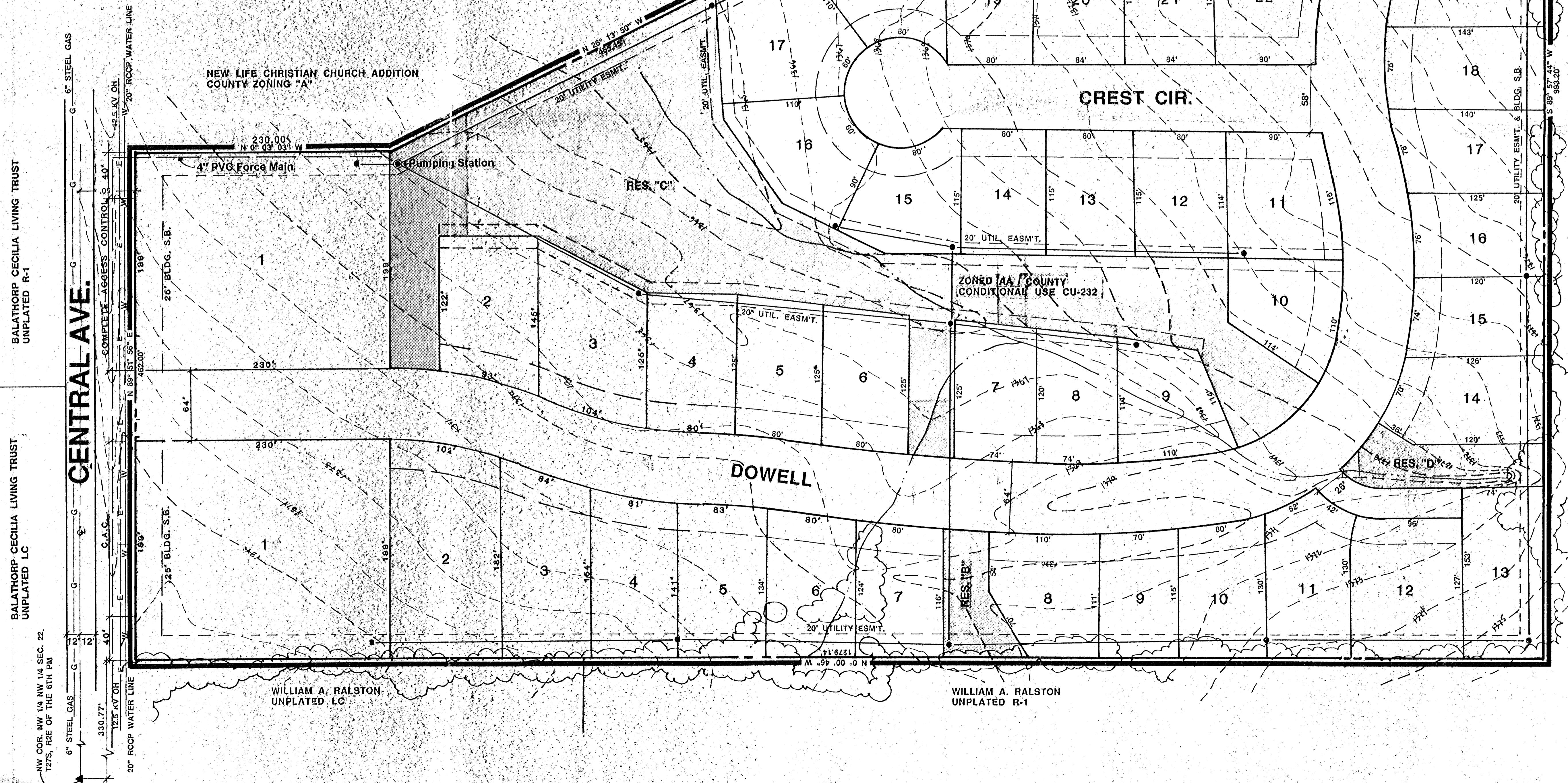
POE & ASSOCIATES OF KANSAS, INC.
CONSULTING ENGINEERS
 334 N. Oliver, Suite 110 • Wichita, Kansas 67208
 Phone 316/683-1114 • FAX 316/683-4444

NOTES:

- A DRAINAGE CONCEPT PLAN SHALL BE PREPARED AND SUBMITTED TO THE CITY ENGINEER BY POE AND ASSOCIATES.
- BENCHMARK "A" (COUNTY) - TOP OF IRON IN TRIMBLE AT INTERSECTION OF CENTRAL AND GREENWICH; EL. 1376.44.
- BENCHMARK "A" - RAILROAD SPIKE IN POWER POLE 462' EAST OF N.W. COR. PARCEL; EL. 1379.42.
- BENCHMARK "B" - 3-40D NAILS IN BASE OF 10" ELM TREE; 1330' SOUTH AND 462' EAST OF THE N.W. COR. OF PARCEL; EL. 1379.17.
- CONTOURS ARE PLOTTED AT ONE FOOT INTERVALS.
- RESERVES "B", "C", AND "D" SHALL PERMIT DRAINAGE, SIDEWALKS, UTILITIES, CONFINED BY BASEMENTS, LANDSCAPE AND PLAYGROUND EQUIPMENT OR RECREATIONAL IMPROVEMENTS.
- ALL PROPERTY WITHIN LIMITS OF PLAT IS ZONED "AA" / COUNTY UNDER CONDITIONAL USE CU-232.



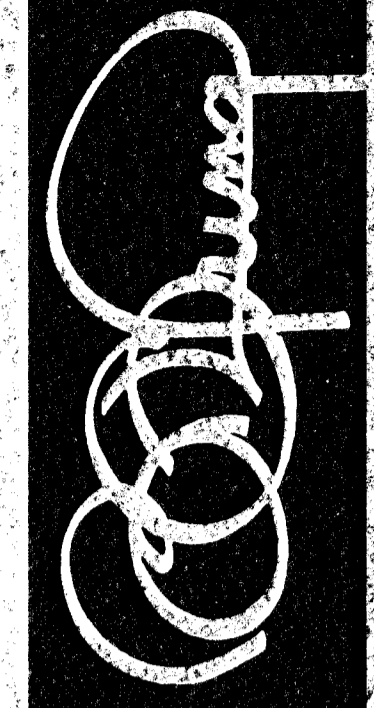
SCALE: 1" = 50'



FOUNTAINS SECOND ADDITION

REPLAT OF FOUNTAINS ADDITION

OWNER: KARL SOLOMON INVESTMENTS, 1831 NORTH ROCK ROAD CT., WICHITA, KS 67206 (316) 684-9011



YUNG DESIGN GROUP

DATE 12-14-94
 REV 2-9-96

SHEET PROJECT SHEET TITLE
 OF PROJECT NO

UNPLATTED R - 1
 LESLIE M. WHITE