

DRAINAGE CONCEPT

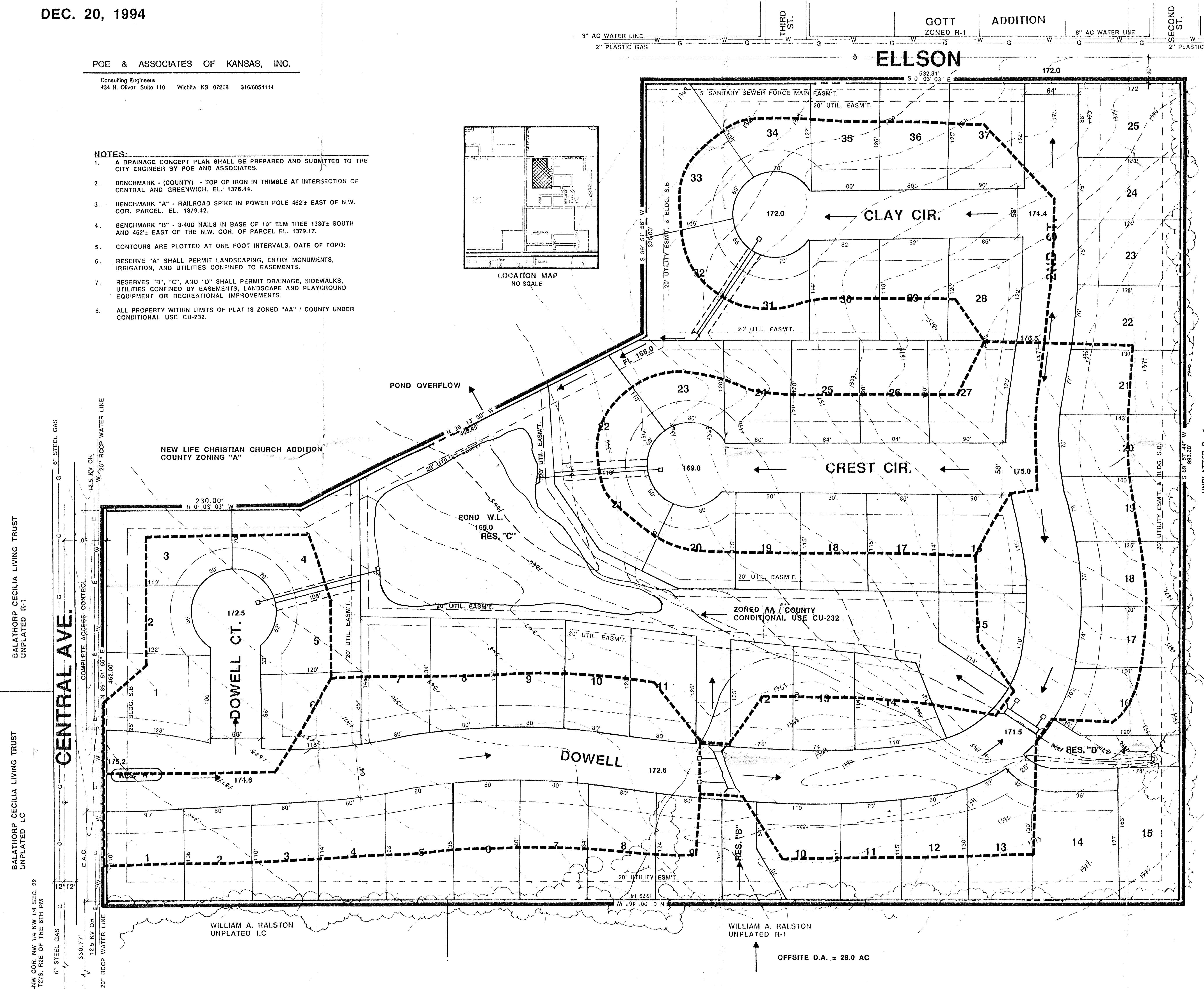
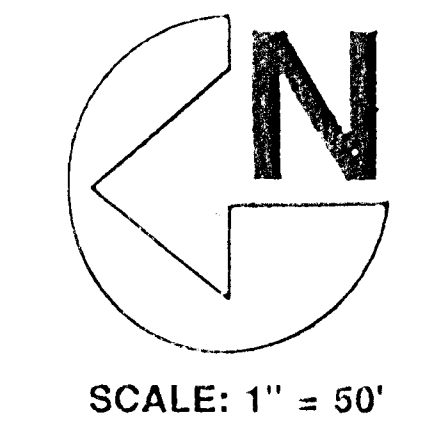
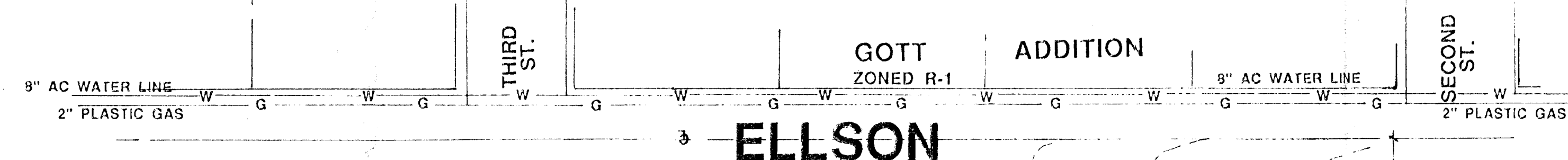
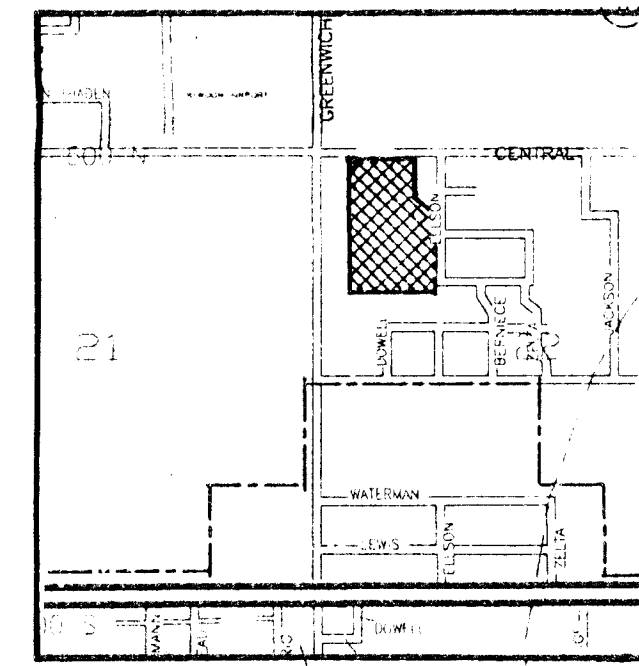
DEC. 20, 1994

POE & ASSOCIATES OF KANSAS, INC.

Consulting Engineers
434 N. Oliver Suite 110 Wichita KS 67208 316/6854114

NOTES:

1. A DRAINAGE CONCEPT PLAN SHALL BE PREPARED AND SUBMITTED TO THE CITY ENGINEER BY POE AND ASSOCIATES.
2. BENCHMARK - (COUNTY) - TOP OF IRON IN THIMBLE AT INTERSECTION OF CENTRAL AND GREENWICH. EL. 1376.44.
3. BENCHMARK "A" - RAILROAD SPIKE IN POWER POLE 462' EAST OF N.W. COR. PARCEL. EL. 1379.42.
4. BENCHMARK "B" - 3-40D NAILS IN BASE OF 10" ELM TREE 1330' SOUTH AND 462' EAST OF THE N.W. COR. OF PARCEL EL. 1379.17.
5. CONTOURS ARE PLOTTED AT ONE FOOT INTERVALS. DATE OF TOPO:
6. RESERVE "A" SHALL PERMIT LANDSCAPING, ENTRY MONUMENTS, IRRIGATION, AND UTILITIES CONFINED TO EASEMENTS.
7. RESERVES "B", "C", AND "D" SHALL PERMIT DRAINAGE, SIDEWALKS, UTILITIES CONFINED BY EASEMENTS, LANDSCAPE AND PLAYGROUND EQUIPMENT OR RECREATIONAL IMPROVEMENTS.
8. ALL PROPERTY WITHIN LIMITS OF PLAT IS ZONED "AA" / COUNTY UNDER CONDITIONAL USE CU-232.



UNPLATTED R-1
LESLIE M. WHITE

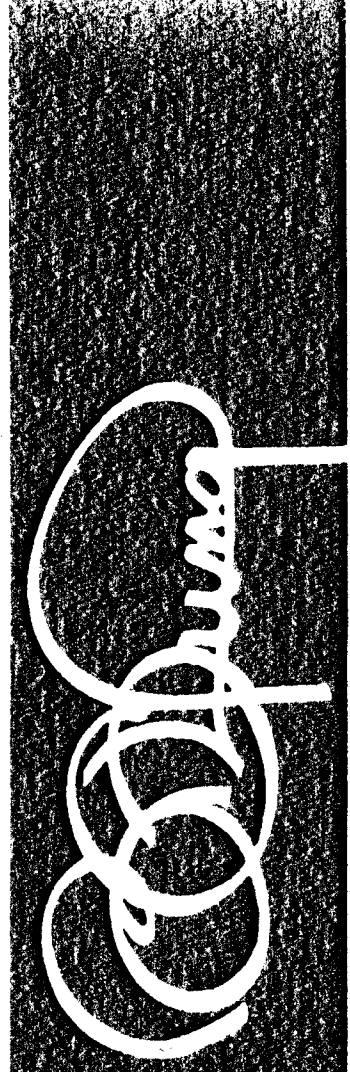
OFFSITE D.A. = 12.0 AC

OFFSITE D.A. = 28.0 AC

FOUNTAINS SECOND ADDITION

REPLAT OF FOUNTAINS ADDITION

OWNER: KARL SOLOMON INVESTMENTS, 1501 NORTH ROCK ROAD CT., WICHITA, KS 67206 (316) 684-9611



YUNG DESIGN GROUP

WICHITA OFFICE: 4919 E. 26TH STREET NORTH • WICHITA, KS 67220
PH: 316-683-5867 • FAX: 316-683-9296

DATE 12-14-94

SHEET TITLE

PROJECT

SHEET

REV.

PROJECT NO.

OF