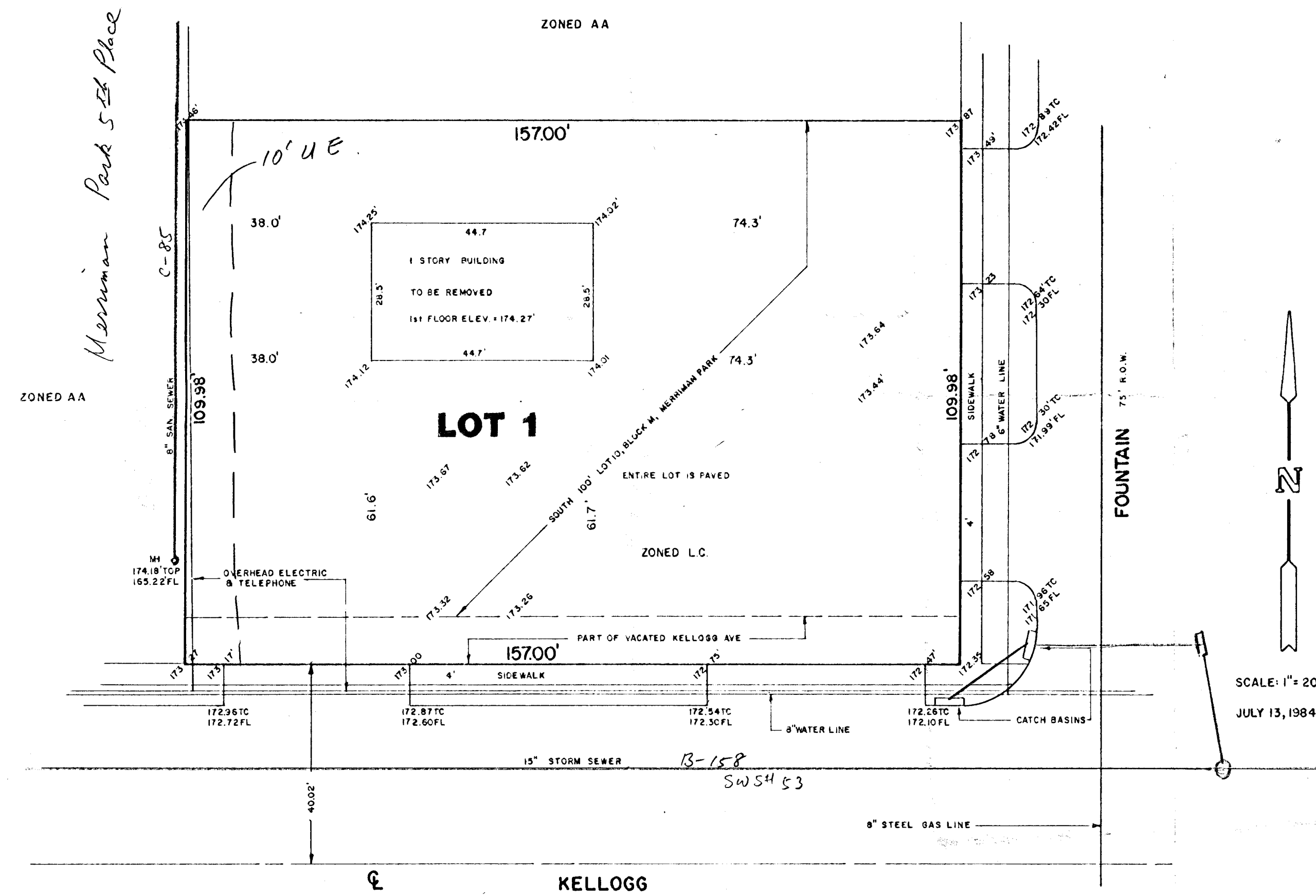


FOUNTAIN PARK WICHITA SEDGWICK COUNTY, KANSAS

TOPOGRAPHIC SURVEY 7/9/84
BENCH MARK: "X" CUT WEST END SOUTHWEST RETURN,
ORME & FOUNTAIN, ELEV. + 165.35' CITY DATUM

OWNERS:
DONALD GENE MC KASSON
RONALD L. MILLER
MICHAEL H. WILSON
442 SOUTH OLIVER
WICHITA, KS. 67218



Air Capitol Land Surveyors
2160 W 21st STREET
WICHITA, KANSAS 67203 (316) 638-9071