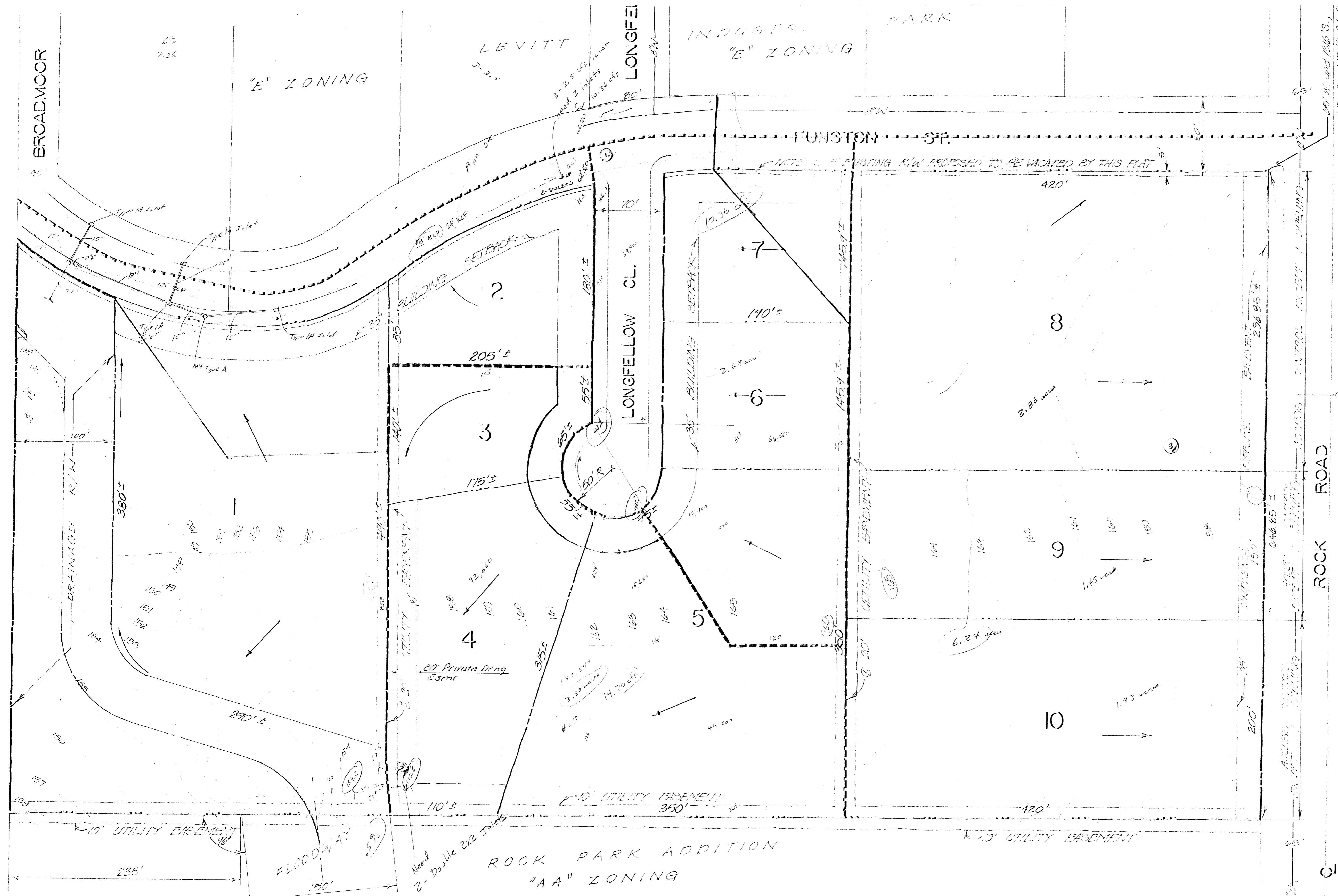


UNPLATTED - CHARLES W. HARRIS



Area 3 -> 26.21 cfs

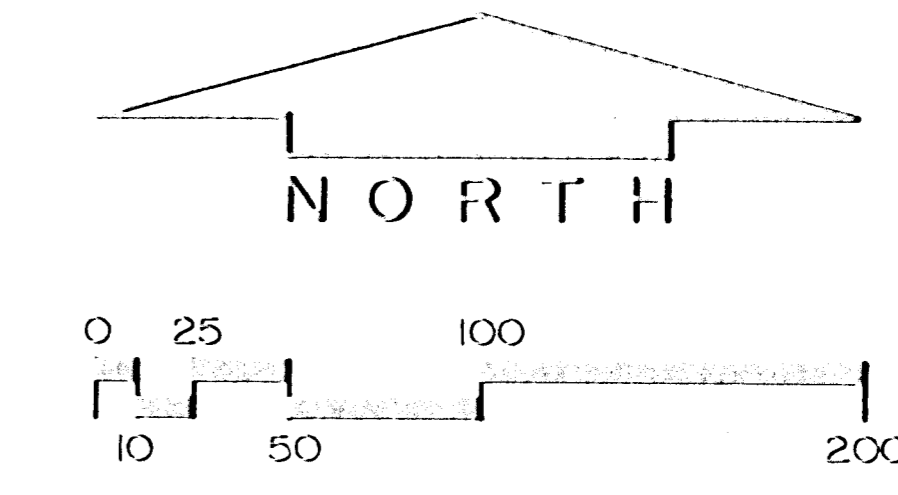
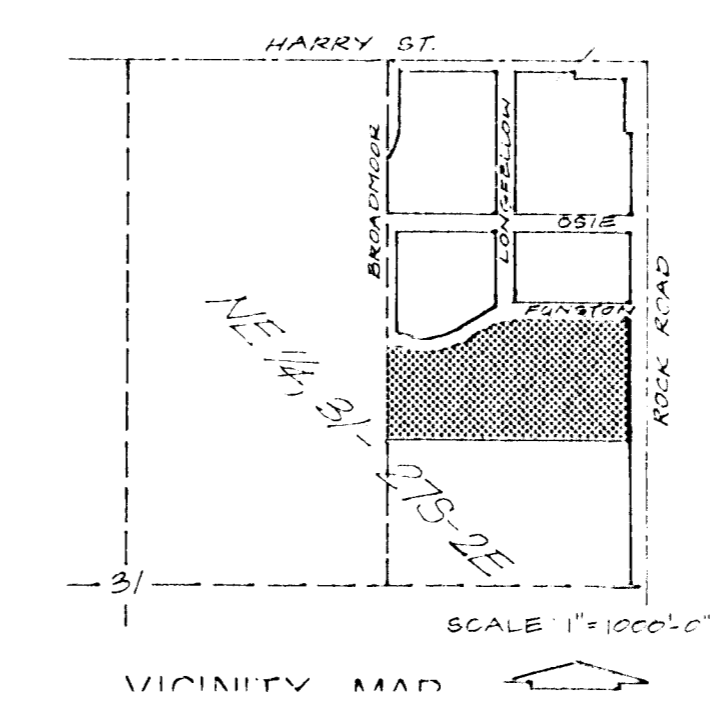
Drainage Plan
12/20/78

NOTE:
ADD RETRAINS ON LOTS
8, 9 AND 10 IN ACCORDANCE WITH
ASSOCIATED C.O.D., D.C. & C.

PRELIMINARY PLAT

ROCK ROAD ADDITION

WICHITA, SEDGWICK COUNTY, KANSAS



Collins Corporation
685 First National Bank Building
Wichita, Kansas 67202
316-265-0651

Drawn: B. W. H.
Checked: J. D. G.
Revised:
Date: 10-24-78
Scale: 1"=50'-0"

ROCK ROAD ADDITION
OWNER / DEVELOPER - LAND ENTERPRISES CO.

Sheet
1
OF ONE