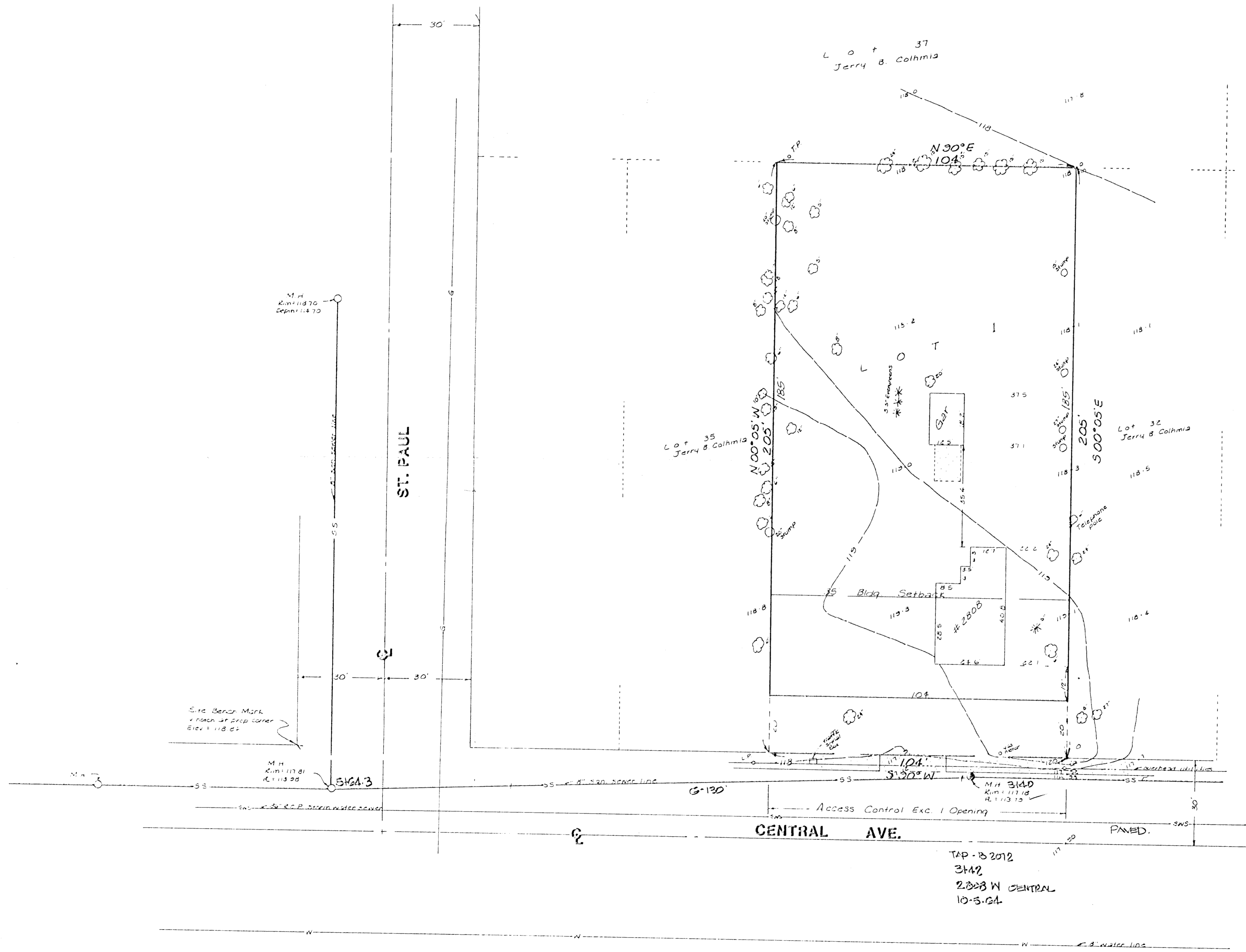


SKETCH PLAT

MESS ADDITION

LOTS 33 AND 34, SIM PARK GARDENS, SEDGWICK COUNTY, KANSAS

OWNERS:
DAVID E. ALLEY AND
M. M. E & S PARTNERSHIP



LMP 18
5/21/22



Site Bench Mark
1/4" corner of NW cor
of St Paul & Central
Elevation = 118.84 City Datum

NOTE:
THE UTILITY LOCATIONS REPRESENTED ON THIS SURVEY
WERE COMPILED BY BOTH FIELD OBSERVATION AND IN-
FORMATION FROM THE VARIOUS UTILITY COMPANIES.
IF ANY CONSTRUCTION OR RELOCATION IS PLANNED FOR
THIS SITE THE VARIOUS UTILITY COMPANIES SHOULD
BE REQUESTED TO VERIFY THEIR LOCATIONS IN THE
FIELD PRIOR TO FINAL DESIGN OR CONSTRUCTION.

TAP-B 2012
3442
2308 W CENTRAL
10-5-24