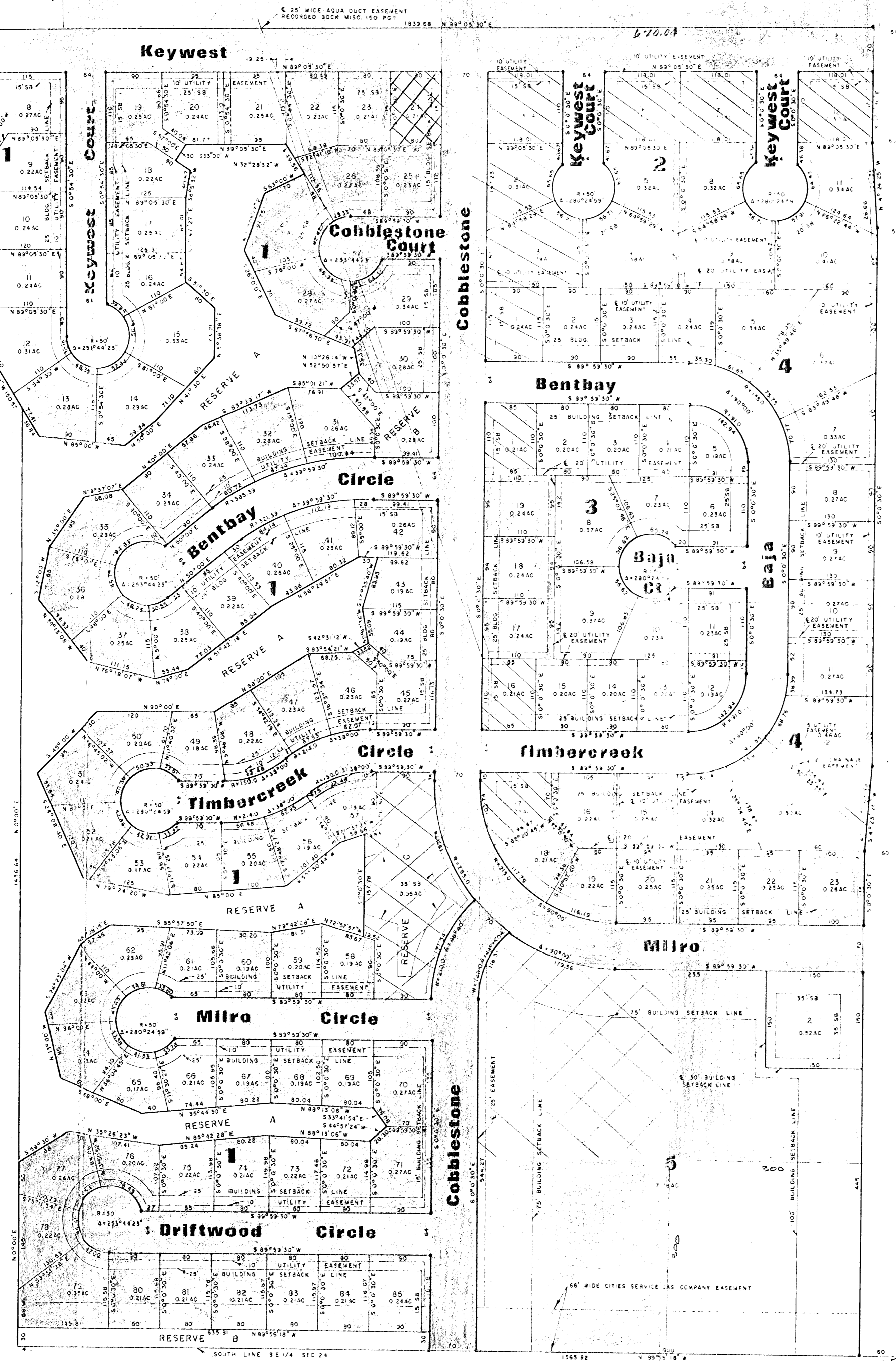
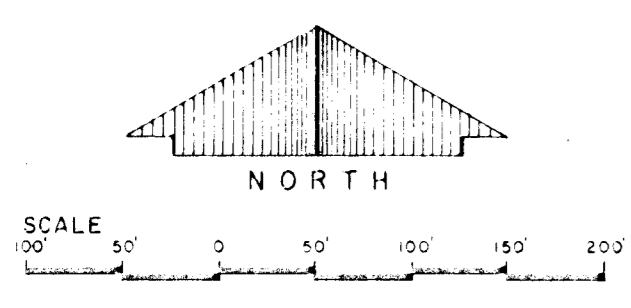


THE MOORINGS
 AN ADDITION TO
 WICHITA, SEDGWICK COUNTY, KANSAS

1977

ENGINEER: REISS AND GOODNESS ENGINEERS
 2160 W. 21ST. WICHITA-KANSAS

Note:
 Lots adjacent to the westerly addition boundary or adjacent to Reserve A shall have a minimum high point ground elevation of 143.0, City Datum.
 B.M. 141.07 "a" in south headwall of culvert at 15th Street South and Meridian Avenue (City of Wichita Datum)



Avenue
 Meridian
 COMPLETE ACCESS CONTROL
 EXCEPT 1 OPENING
 EXCEPT 2 OPENINGS

I, _____, a duly licensed professional engineer, do hereby certify that I have examined the plat and the same is correct and true to the original survey and that the same is in accordance with the laws of the State of Kansas and the rules and regulations of the Board of Surveyors of the State of Kansas.

 (SEAL)

KNOW ALL MEN BY THESE PRESENTS:

That we, W. Harley Miles and Jo Ann Miles, his wife, have caused the last described in the Engineer's Certificate to be platted into Lots, Blocks, Reserves and Streets. Easements are hereby granted as indicated for utility and drainage purposes to or from Meridian Avenue and across the East line of Block 1 and Block 2, except as shown on the accompanying plat, are hereby granted to the appropriate governmental body. Reserves A and B are to be owned and maintained by the Home Owners Association and are both for utility construction and maintenance and open space. Reserve A is also for construction and maintenance of a lake. Reserve B is for construction of a sales and development office, restaurant, supper club and/or community activity center.

 W. Harley Miles

 Jo Ann Miles

STATE OF KANSAS)
 COUNTY OF SEDGWICK) SS.

Be it remembered that on this _____ day of _____, 1977, before me, a notary public in and for said county and state, W. Harley Miles and Jo Ann Miles, his wife, appeared and acknowledged to me the foregoing instrument of writing, which instrument they acknowledged to be the same as that which they executed and which heretofore met my hand and official seal for the purpose aforesaid.

By _____

This plat of the _____ of _____ County, Kansas, is hereby approved and the Reservations shown hereon approved by the Board of County Commissioners of Sedgewick County, Kansas, this _____ day of _____, 1977.

 (SEAL)

 (SEAL)

 (SEAL)

 (SEAL)

This plat approved and the Reservations shown hereon approved by the Board of Commissioners of the City of Wichita, Kansas, this _____ day of _____, 1977.

 Mayor

 City Clerk

 (SEAL)

This is to certify that this instrument was filed for record in the Office of Deeds at _____ A.M. on the _____ day of _____, 1977.

 Register of Deeds

 Deputy

This plat approved and the Reservations shown hereon approved by the Board of County Commissioners of Sedgewick County, Kansas, this _____ day of _____, 1977.

 Chairman

 Commissioner

 Commissioner

Attest:

 County Clerk

Entered on Transfer Record this _____ day of _____, 1977