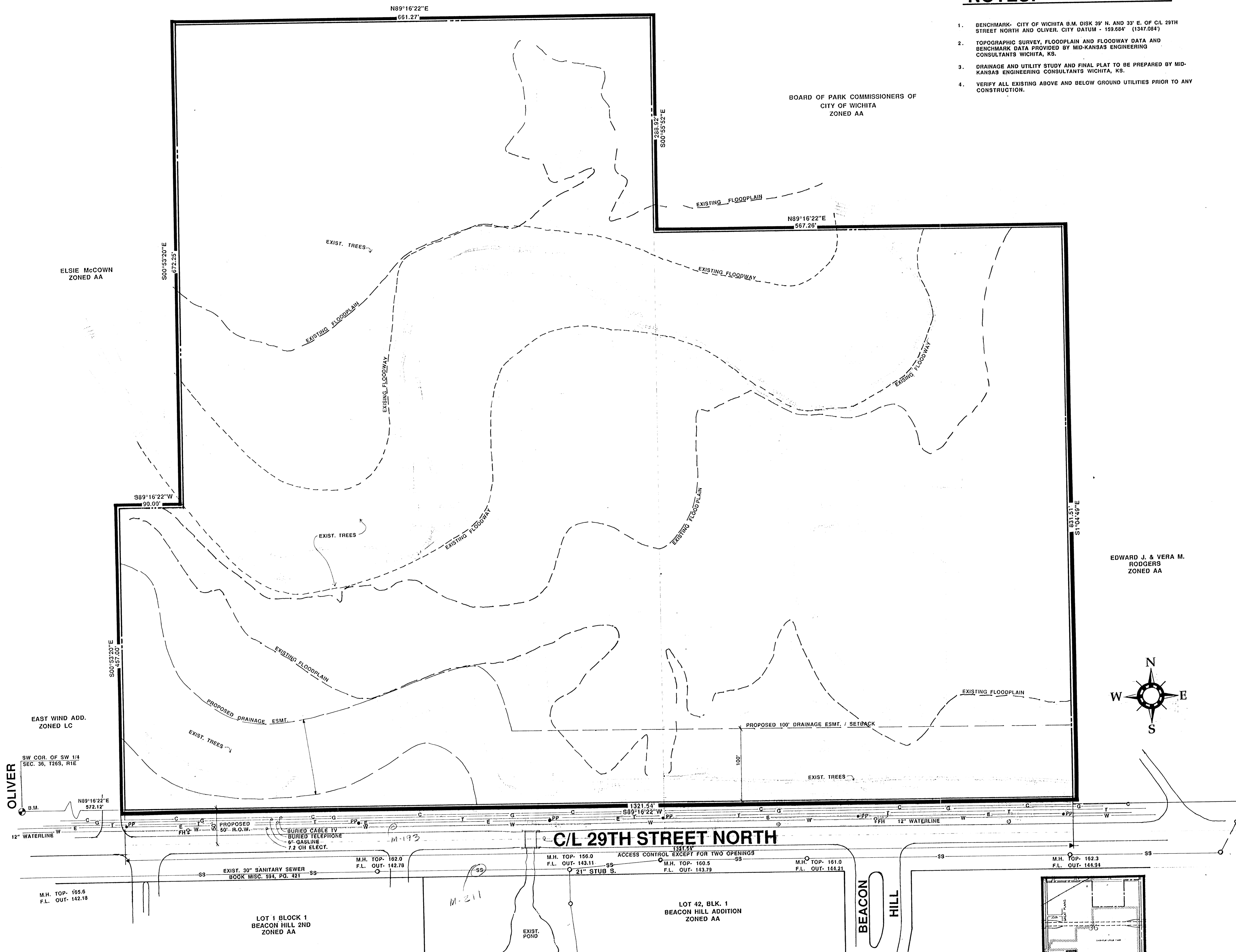


BOARD OF PARK COMMISSIONERS OF
CITY OF WICHITA
ZONED AA

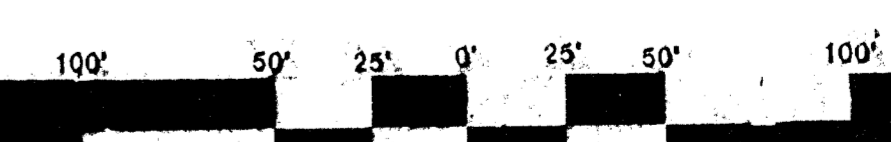
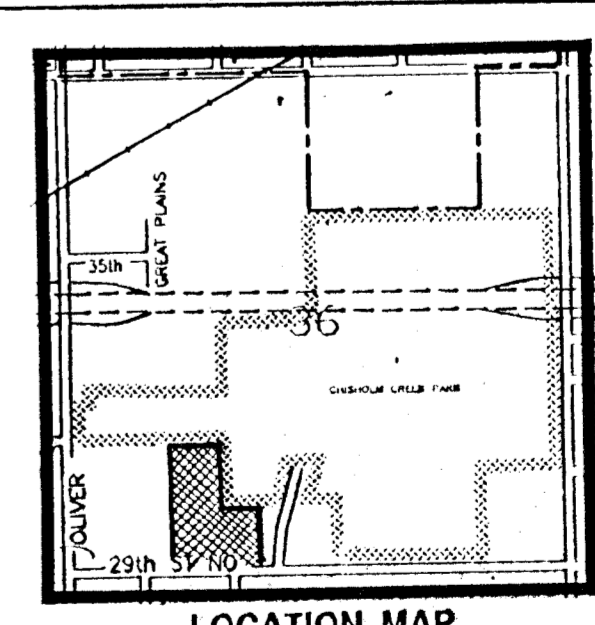
NOTES:

1. BENCHMARK - CITY OF WICHITA B.M. DISK 33' N. AND 33' E. OF CL 29TH STREET NORTH AND OLIVER. CITY DATUM - 159.684' (1347.084')
2. TOPOGRAPHIC SURVEY, FLOODPLAIN AND FLOODWAY DATA AND BENCHMARK DATA PROVIDED BY MID-KANSAS ENGINEERING CONSULTANTS WICHITA, KS.
3. DRAINAGE AND UTILITY STUDY AND FINAL PLAT TO BE PREPARED BY MID-KANSAS ENGINEERING CONSULTANTS WICHITA, KS.
4. VERIFY ALL EXISTING ABOVE AND BELOW GROUND UTILITIES PRIOR TO ANY CONSTRUCTION.



PRELIMINARY PLAT
PIONEER BALLOON ADDITION

OWNERS: PIONEER BALLOON COMPANY 555 N. WOODLAWN & CAROL J. DARRAH P.O. BOX 68063 WICHITA, KS. (316-685-2268)



DATE: FEBRUARY 20, 1994 SCALE: 1"=50'-0"



YUNG DESIGN GROUP
 BRANSON OFFICE • 1821 W. HIGHWAY 76, SUITE 7 • BRANSON, MO 65616
 PH: 417-335-8235 • FAX: 417-335-8206
 WICHITA OFFICE • 4912 E. 20TH STREET NORTH • WICHITA, KS 67220
 PH: 316-683-5587 • FAX: 316-683-9298