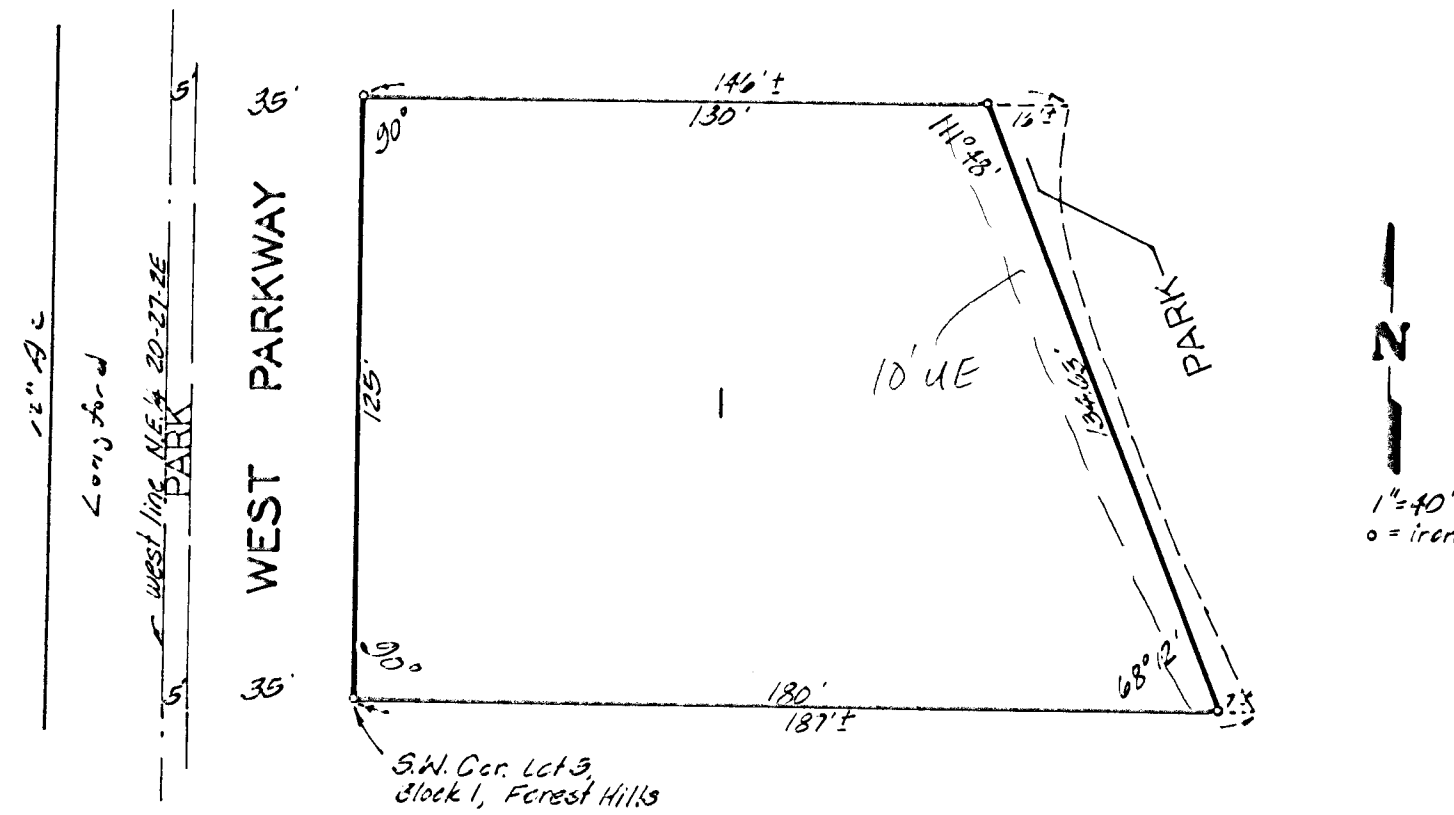


GRAFF ADDITION

WICHITA, KANSAS



State of Kansas) ss. We, Baughman Company, P.A.,
Sedgwick County) ss. Surveyors in aforesaid county and state do here-
by certify that we have surveyed and platted
"GRAFF ADDITION," Wichita, Kansas and that the
accompanying plat is a true and correct exhibit
of the property surveyed, described as the south
125 feet of Lot 5, Block 1, Forest Hills, Sedgwick
County, Kansas. Being situated in the N.E. 1/4 of
Sec. 20, Twp. 21-S, R-2-E of the 16th P.M., Sedgwick
County, Kansas.

Date

Baughman Company, P.A.

Surveyor

This plat of "GRAFF ADDITION,"
Wichita, Kansas, has been submitted to and approved
by the Wichita-Sedgwick County Metropolitan Area
Planning Commission, Wichita, Kansas. Dated this
____ day of _____, 193__.

Wichita-Sedgwick County Metropolitan Area Planning
Commission

James C. Wilson Chairman

Robert A. Loken Secretary

Know all men by these presents
that I, the undersigned, have caused the land de-
scribed in the surveyors certificate to be platted
into a lot and park to be known as "GRAFF
ADDITION," Wichita, Kansas. The park is hereby
dedicated to the public for park purposes.

Sandra F. Prater

This plat approved and all
dedications shown hereon accepted by the Board
of Commissioners of the City of Wichita, Kansas,
this ____ day of _____, 193__.

Robert G. Knight Mayor

Donald C. Gisick City Clerk

State of Kansas) ss. The foregoing instrument was
Sedgwick County) ss. acknowledged before me, this ____ day of _____
193__, by Sandra F. Prater, a single person.

My App. Exp. _____ Notary Public

This plat approved and all
dedications shown hereon accepted by the Board
of Commissioners of Sedgwick County, Kansas, this
____ day of _____, 193__.

Donata E. Drago Chairman

Bernard A. Hentgen Commissioner

Tom Seatt Commissioner

Don Wright County Clerk

State of Kansas) This is to certify that this
Sedgwick County) ss. plat has been filed for record in the office of
the Register of Deeds, this ____ day of _____
193__, at ____ o'clock ____ M; and is duly recorded.

Pat Kettler Register of Deeds

Ed Resa Deputy

Entered on transfer record
this ____ day of _____, 193__.

Don Wright County Clerk