




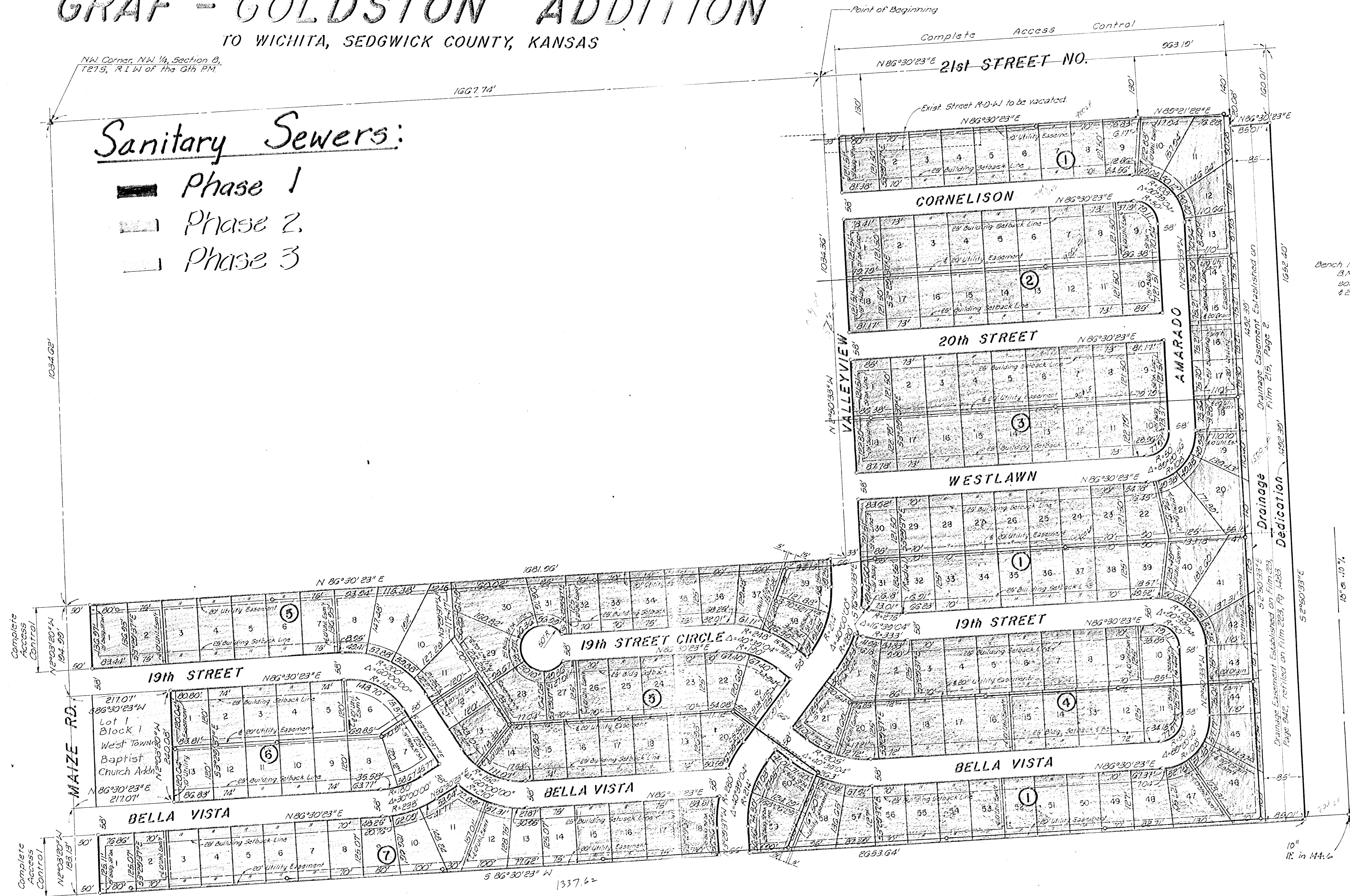
GRAF - GOLDSTON ADDITION

TO WICHITA, SEDGWICK COUNTY, KANSAS

NW Corner, NW 1/4, Section 8,
T21S, R1W of the 6th PM.

Sanitary Sewers:

-  Phase 1
-  Phase 2
-  Phase 3



Scale: 1"=100'
August 14, 1924

Bench Mark - City of Wichita
B.M. Disc 6' east & 20'
south of E's Maize Rd.
& 21st St. No.
E1.1361 TO MSL

Green Phase I
900
900
900
900
1500
5100
5100
5100

Blue Phase II
270
75
175
485
175
140
85
4195

Red Phase
725
450
215
970
2270

RAIN +
WESTLINK