




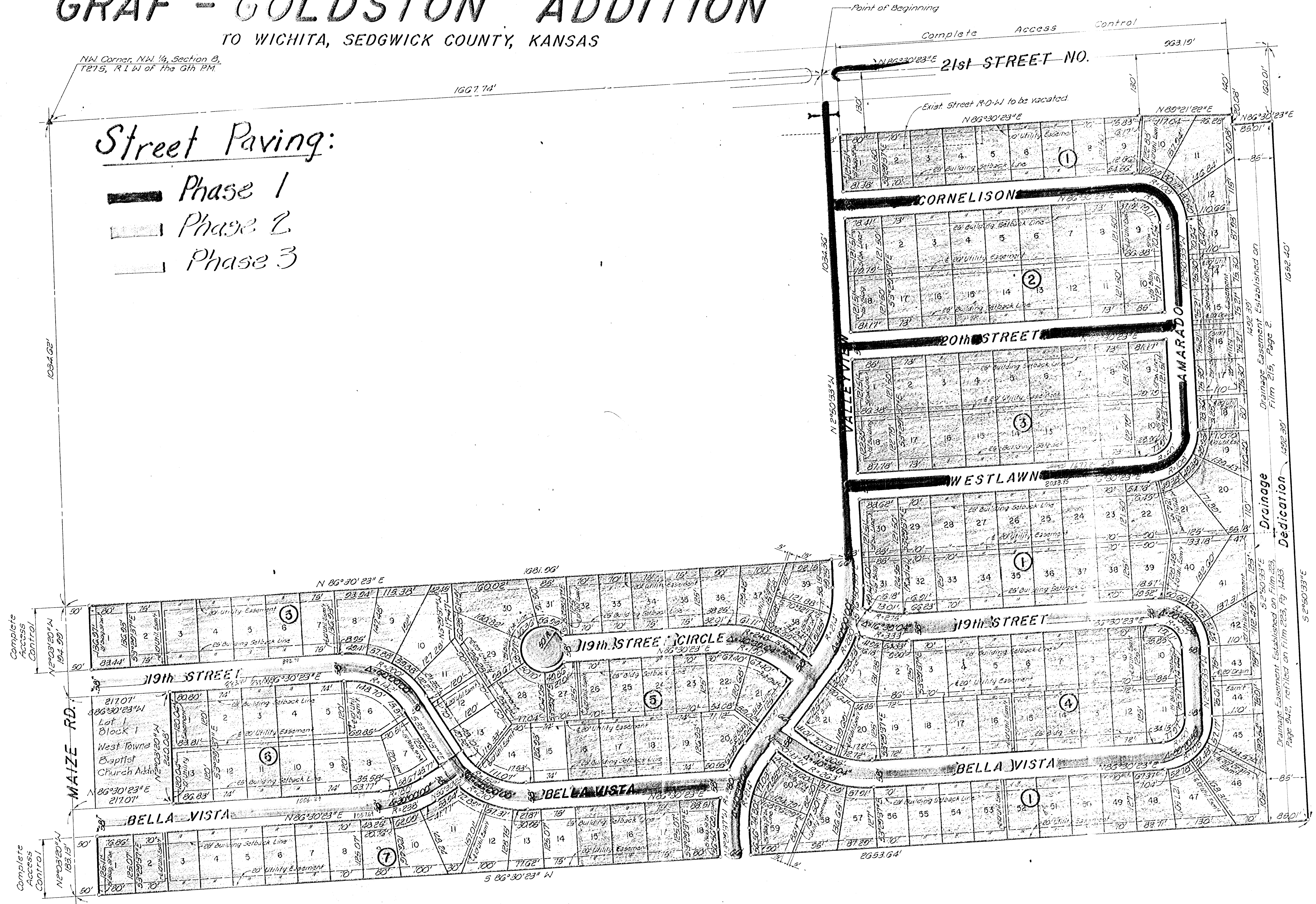
# GRAF - GOLDSTON ADDITION

TO WICHITA, SEDGWICK COUNTY, KANSAS

NW Corner, NW 1/4, Section 8,  
T27S, R1W of the 6th PM.

## Street Paving:

-  Phase 1
-  Phase 2
-  Phase 3



Scale: 1"=100'  
August 14, 1984

Bench Mark - City of Wichita  
B.M. Disc 64' east & 80'  
south of E's Maize Rd.  
& 21st St. No.  
Elevation 1351.70 MSL

Drainage Easement Established on  
Film 215, Page 2  
Dedication  
1492.39'  
52°50'33"E