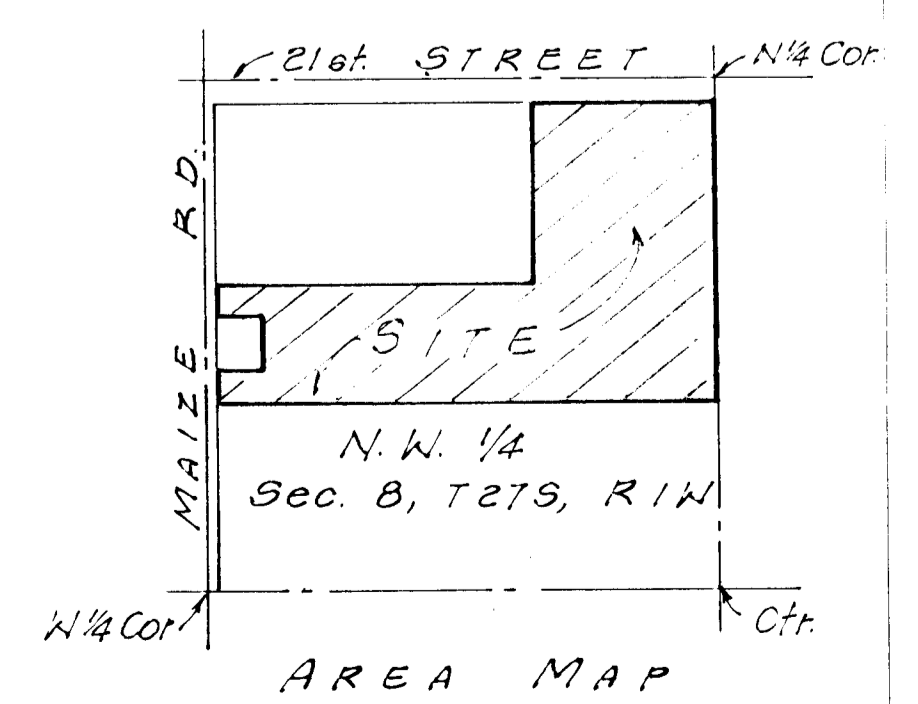




**PRELIMINARY PLAT OF  
GRAF- GOLDSTON ADDITION  
TO WICHITA, SEDGWICK COUNTY, KANSAS.**

OWNER: JOE GRAF  
2445 SO. GLENDALE  
WICHITA, Ks.

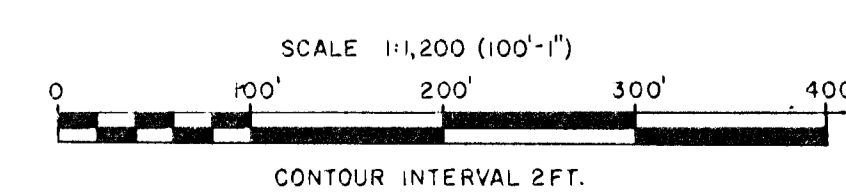
ENGINEER: P. E. C.  
1440 ENGLISH  
WICHITA, Ks.



BM City of Wichita B.M. Disc  
64' East & 99' South of centerline  
of 21st St & Moize Rd. El = 1351.70 m.s.l.

TOPOGRAPHIC MAP OF LANDS LOCATED AT  
N.W. 1/4 SECTION 8, 27S./1W.  
SEDGWICK COUNTY, KANSAS

ENGINEERING & SURVEYING  
P.E.C.-ALLIED LABORATORIES



PHOTOGRAMMETRY BY  
MILES AIR PHOTO SURVEY  
SWIFT, KANSAS, 02829  
(1:21,492:1550 FILE #710 P-6

MAPPING PHOTOGRAPHY  
TYPE - VERTICAL AT 40% P.S.  
ALTITUDE 15000 FT. A.M.S.L.  
DATE 5/28/58 SER 1979

May, 1984