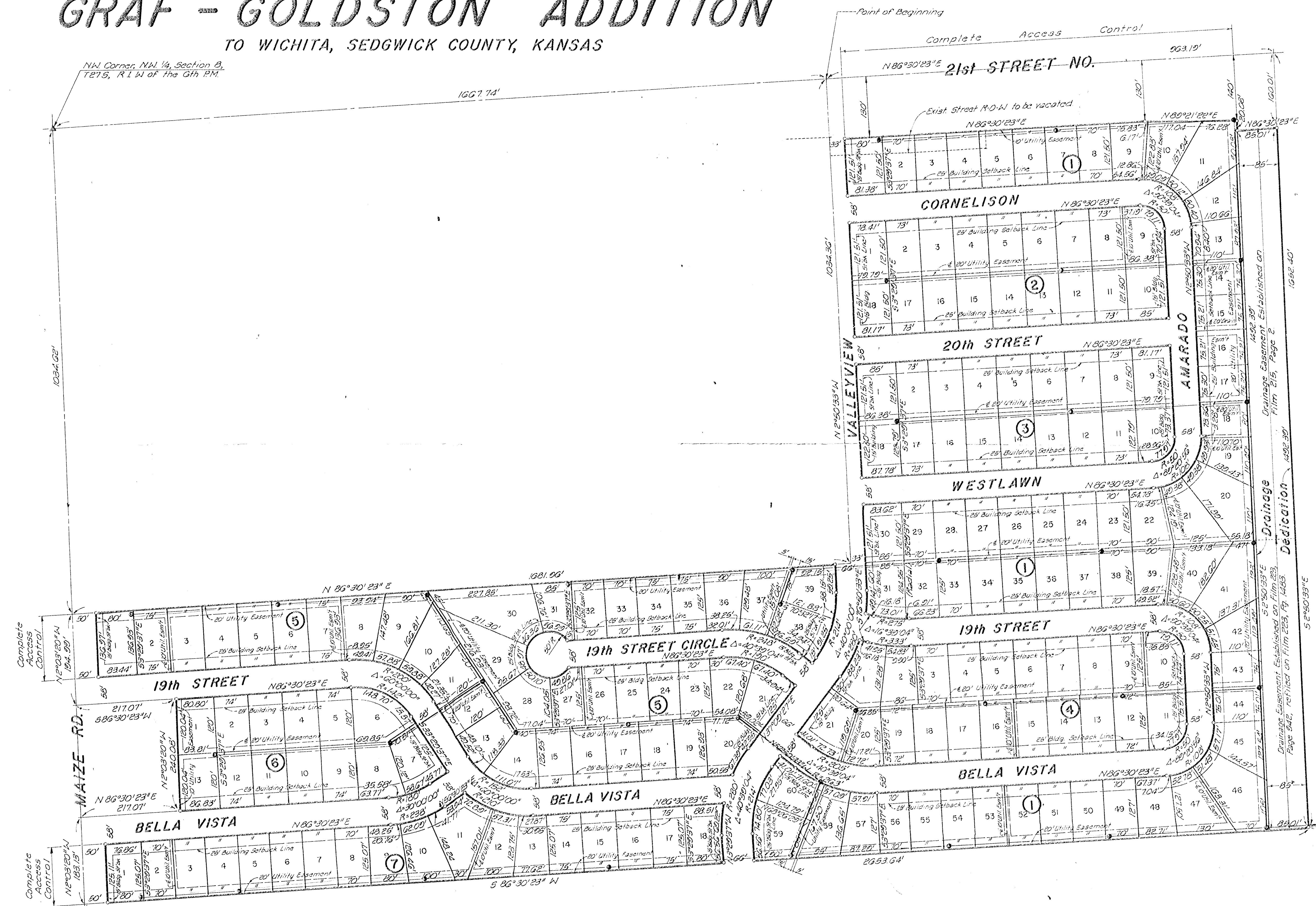


PROPOSED SANITARY SEWERS
GRAF - GOLDSTON ADDITION
 TO WICHITA, SEDGWICK COUNTY, KANSAS

N.W. Corner, N.W. 1/4, Section 8,
 T21S, R11W of the 6th P.M.



Scale: 1"=100'
 August 14, 1928

Bench Mark - City of Wichita
 B.M. Disc 64' east & 80'
 south of 8's Marze Rd.
 & 21st St. No.
 E1 1351.70 MSL

Drainage Easement Established on
 Film 215, Page 2

Drainage Easement Established on
 Film 223, Page 2

Drainage Easement Established on
 Film 223, Page 2

Easement 10'
 15' or 18'