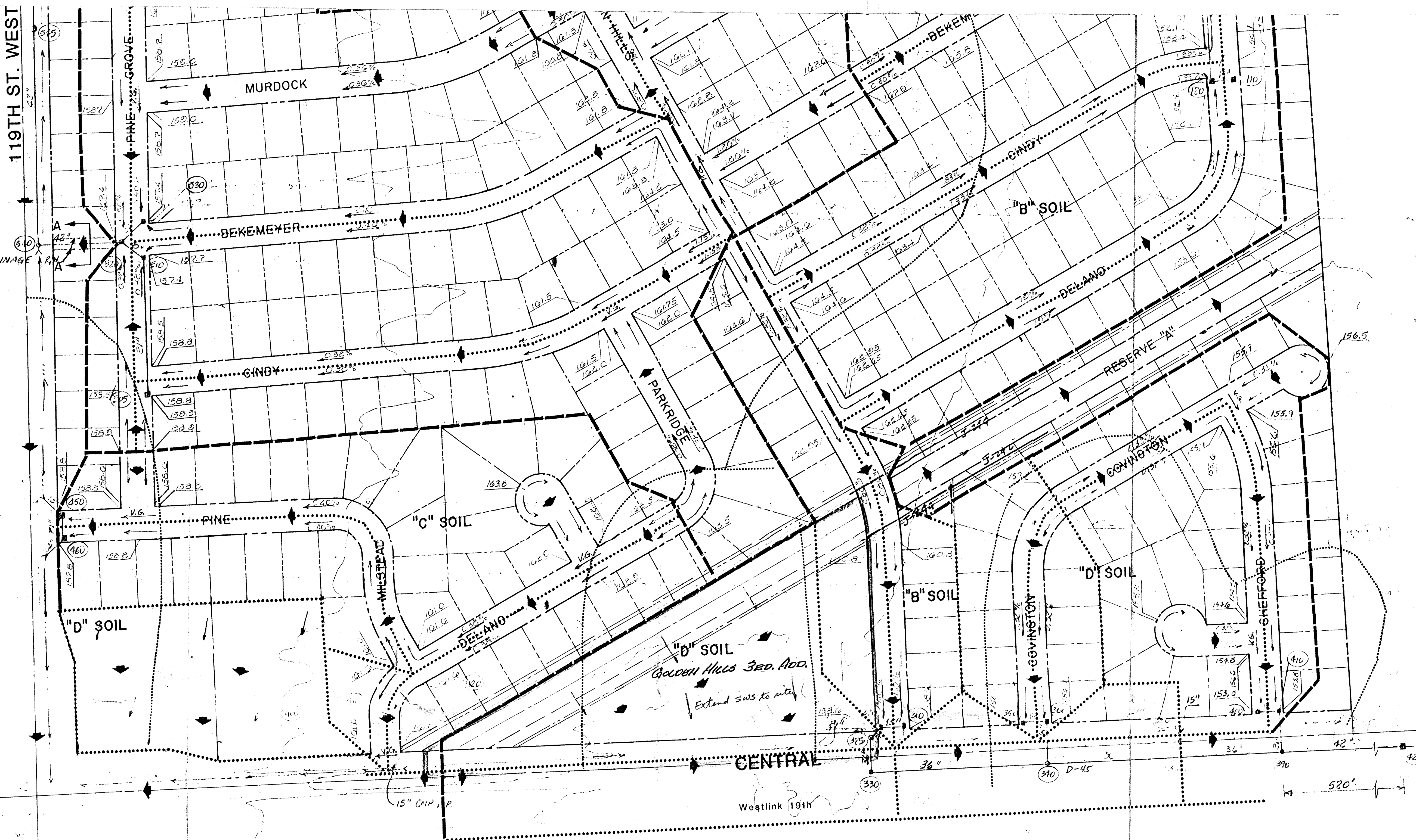


Unplatted



119TH ST. WEST

DRAINAGE PLAN
GOLDEN HILLS ADDITION
 WICHITA, SEDGWICK COUNTY, KANSAS

H. WILLIAM SOLT PRES. DATE: JUNE 7, 1985

OWNER: **SUNRISE ENTERPRISES, LTD.**

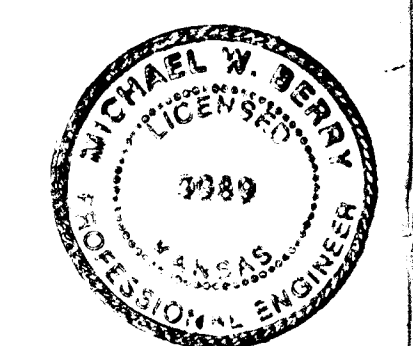
401 Industrial Road
 Goddard, Kansas 67052

P.O. Box 131
 (316) 794-8625

ENGINEER: **PROFESSIONAL ENGINEERING CONSULTANTS, P.A.**
 1440 E. English
 Wichita, Kansas 67211

LEGEND

- Inlet w/Node Identification
- Manhole w/Node Identification
- Storm Sewer w/Size
- Open Channel
- Inlet(s) (By Others)
- Storm Sewer (By Others)
- Drainage Direction (Minor Storm)
- Drainage Direction (Major Storm)
- Drainage Crest (Minor Storm)
- Drainage Crest (Major Storm)
- Elevation (Top of Std. Curb)
- SCS Hydrologic Soil Group Boundary
- FEMA Floodplain Boundary



BENCH MARKS:
 C.O.W. B.M. Disc. 40' E & 40' S. of
 E. 110th St. & Central
 Elev. = 150.03

C.O.W. B.M. Disc. N.E. Cor.
 Central Ave. bridge over
 Cowskin Creek.
 Elev. = 143.02
 Elev. = 131.02 MSL

C.O.W. B.M. Disc. 1/2 mile S. of
 Central & 41' E. of 110th
 St. W. Elev. = 150.50

PROFESSIONAL ENGINEERING CONSULTANTS, P.A.
 1440 EAST ENGLISH STREET, WICHITA, KS 67211

PHOTOGRAMMETRY BY: AERIAL PHOTOGRAPHY
 MILES AIR PHOTO SURVEY THE VERTICAL DATUM IS
 321 THURSTON STREET ANCHORAGE, ALASKA
 MANHATTAN, KANSAS 66502
 90-519-1100 FILE # 4-94-97

Board of Park Commis...