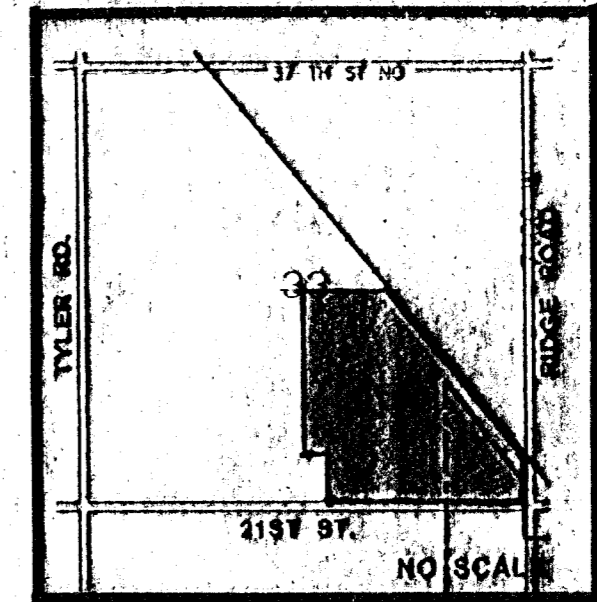


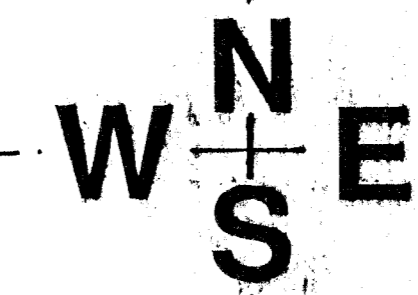
CHARLES AND CONNIE WOODARD

NOTES:

- 1.) BENCH MARK: CHISELLED SQUARE ON THE N.E. COR. OF THE 3-7'x3' BRIDGE ON RIDGE ROAD, 175' NORTH OF THE S.E. COR. N.E. 1/4 SEC. 4, T27S, R1W. ELEV. - 1325.84 M.S.L.
- 2.) TOPOGRAPHY IS FROM AERIAL OBTAINED 4 APRIL 1992.
- 3.) A DRAINAGE CONCEPT PLAN AND HYDROLOGY STUDY SHALL BE PREPARED BY P.E.C. AND SUBMITTED TO CITY ENGINEER.
- 4.) RESERVES A, B, G, AND H ARE FOR LANDSCAPING, ENTRY MONUMENTS AND UTILITIES CONFINED TO EASEMENTS.
- 5.) RESERVES D, E, AND F ARE FOR LANDSCAPING, LAKES AND DRAINAGE STRUCTURES, WALKS, DOCKS, AND UTILITIES CONFINED TO EASEMENTS. RESERVE "D" SHALL ALSO PERMIT A CLUBHOUSE, POOL, PARKING, AND RELATED RECREATIONAL FACILITIES.
- 6.) RESERVES C, I, J, K, L, M, N, O AND P SHALL PERMIT LANDSCAPING AND UTILITIES CONFINED TO EASEMENTS.



LOCATION MAP



SCALE: 1"=100'

LEGEND

- Drainage Basin Boundary
- Drainage Sub-Basin Boundary
- Drainage Direction-Minor Storm
- Drainage Direction-Major Storm
- Proposed SWIS & Inlet
- Proposed Valley Gutter



WOODARD CHILDREN'S COLLEGE TRUST
ZONED R-1

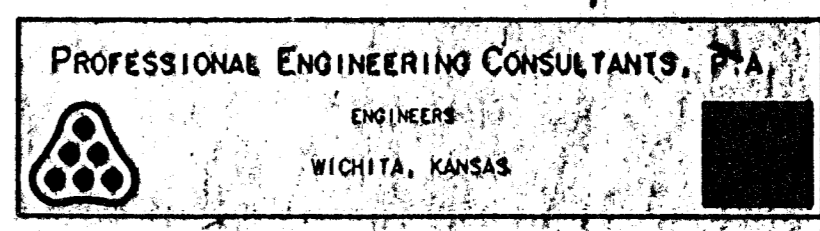
LAWRENCE AND JUDITH WOODARD
ZONED R-1

ZONED E, LIGHT IND.

DRAINAGE CONCEPT 8-17-92

FOREST LAKES

OWNER: REGINALD B. BOÖTHE, 7926 WEST 21ST, WICHITA, KS 67212



4912 E. 29TH STREET NORTH WICHITA, KANSAS 67220