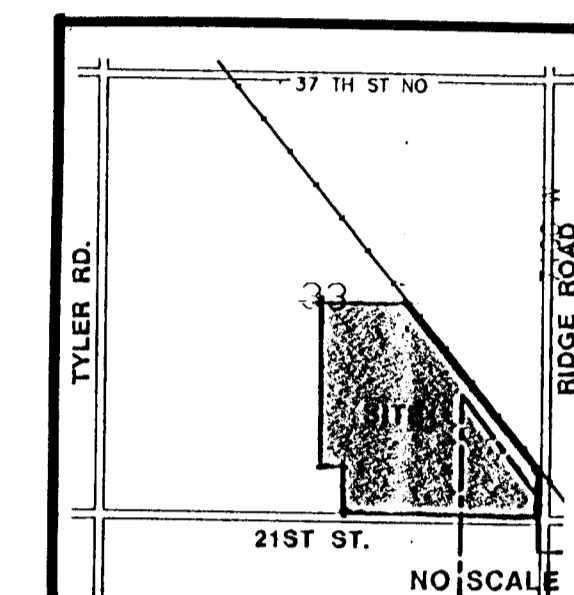
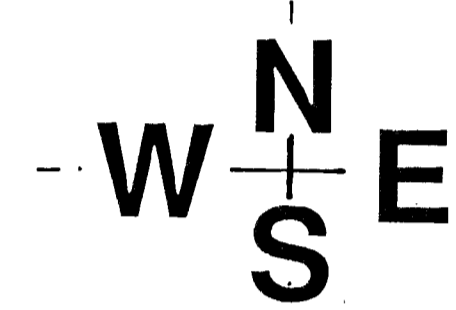


NOTES:

- 1.) BENCH MARK: CHISELED SQUARE ON THE N.E. COR. OF THE 3-7'X3' BRIDGE ON RIDGE ROAD, 175' NORTH OF THE S.E. COR. N.E. 1/4 SEC. 4, T27S, R1W. ELEV. - 1325.64 M.S.L.
- 2.) TOPOGRAPHY IS FROM AERIAL OBTAINED 4 APRIL 1992.
- 3.) A DRAINAGE CONCEPT PLAN AND HYDROLOGY STUDY SHALL BE PREPARED BY P.E.C. AND SUBMITTED TO CITY ENGINEER.
- 4.) RESERVES A, B, G, AND H ARE FOR LANDSCAPING, ENTRY MONUMENTS AND UTILITIES CONFINED TO EASEMENTS.
- 5.) RESERVES D, E, AND F ARE FOR LANDSCAPING, LAKES AND DRAINAGE STRUCTURES, WALKS, DOCKS, AND UTILITIES CONFINED TO EASEMENTS. RESERVE "D" SHALL ALSO PERMIT A CLUBHOUSE, POOL, PARKING, AND RELATED RECREATIONAL FACILITIES.
- 6.) RESERVES C, I, J, K, L, M, N, O AND P SHALL PERMIT LANDSCAPING AND UTILITIES CONFINED TO EASEMENTS.



LOCATION MAP



SCALE: 1"=100'

WOODARD CHILDREN'S COLLEGE TRUST
ZONED R-1

LAWRENCE AND JUSTY WOODARD
ZONED R-1

RITCHIE ENTERPRISES
ZONED E. LIGHT INDUSTRIAL

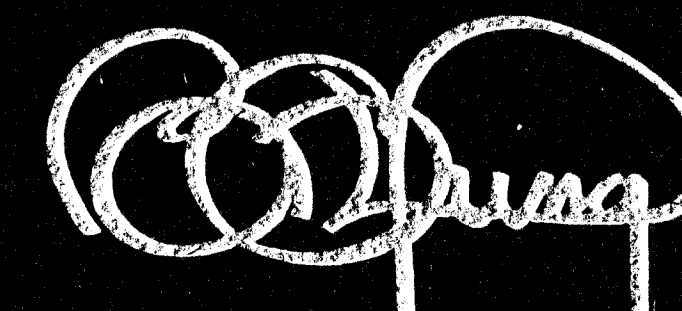
ZONED E. LIGHT IND.

PRELIMINARY PLAT

FOREST LAKES

OWNER: REGINALD B. BOOTHE, 7926 WEST 21ST, WICHITA, KS 67212

DATE: AUG 12, 1992 / AUGUST 17, 1992



BILL G. YUNG DESIGN
1912 E. 29TH STREET NORTH WICHITA, KANSAS 67220