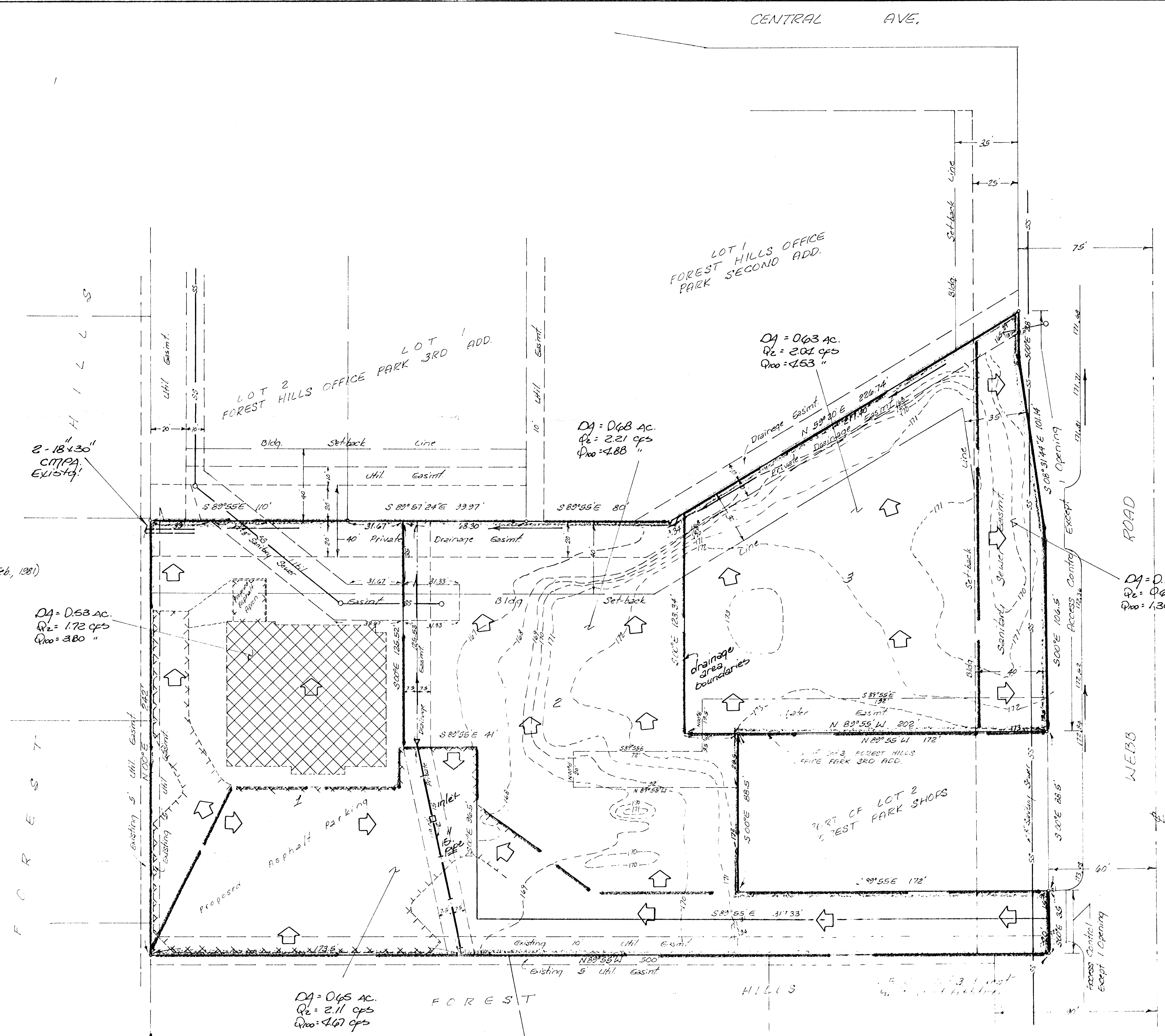


1"=30'  
 Elev. = City Datum (K.O. Taylor Feb, 1981)  
 Min. Rod Elev. = 171.0 City Datum

NOTE:  
 LOT 1 IS UNDER CONSTRUCTION:



# drainage plan

SKETCH PLAT  
 FOREST HILLS OFFICE PARK  
 FOURTH ADDITION  
 PART OF LOT 3, FOREST HILLS OFFICE PARK, 1/4 SECTION 17, T. 11 N., R. 10 W., S. 36

KATHRYN B. GOULD

6-9-82