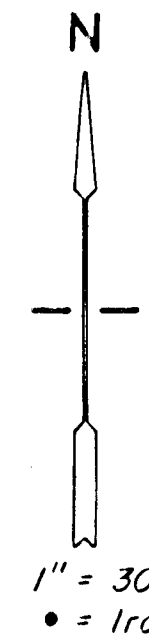


# JOHN WEITZEL ADDITION

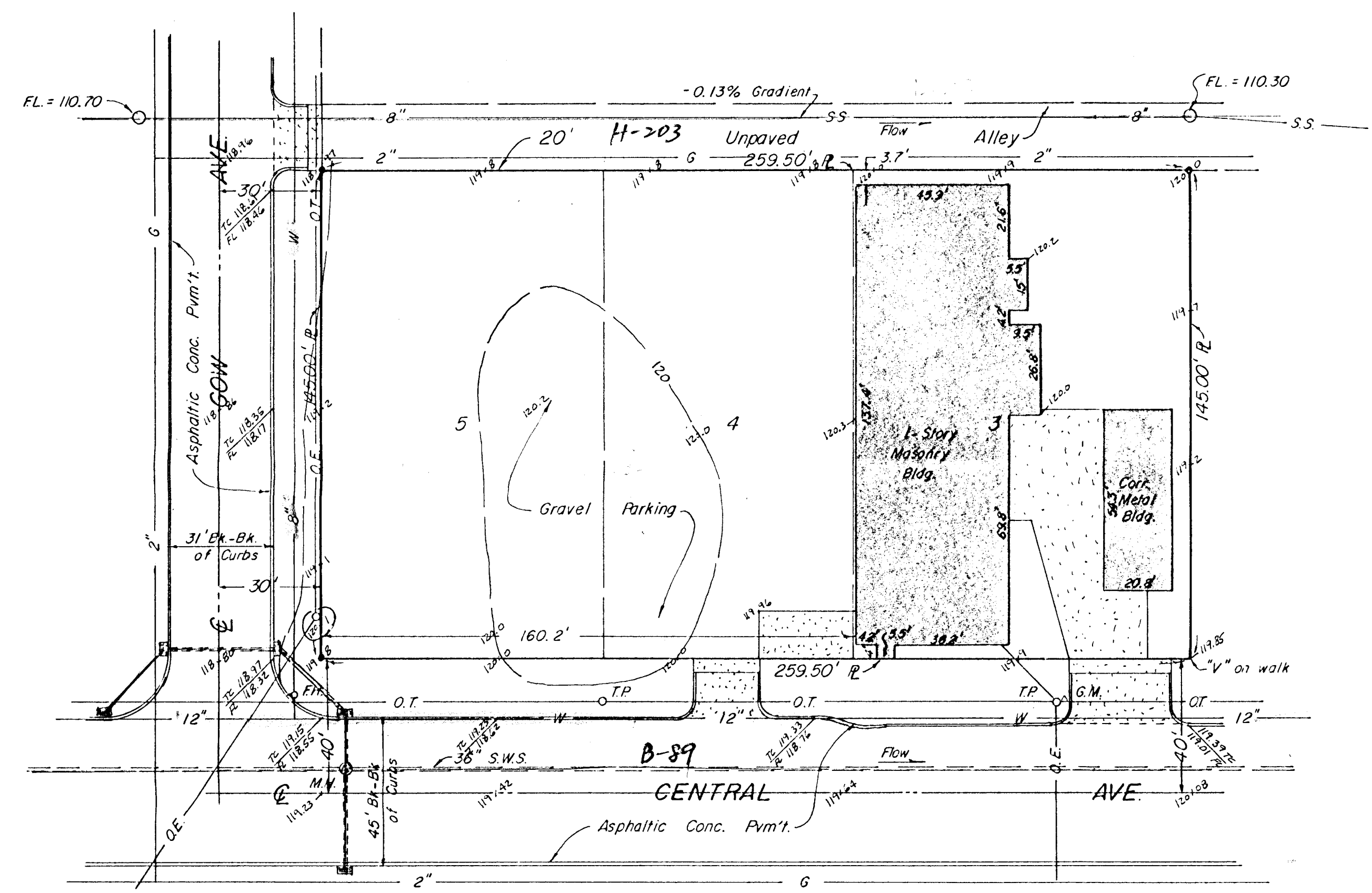
## Vicinity Map

Lots 3, 4 & 5, DAVIS GARDENS,  
Sedgwick County, Kansas.

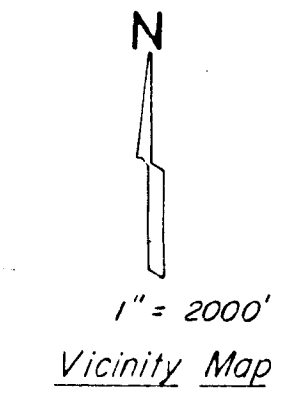
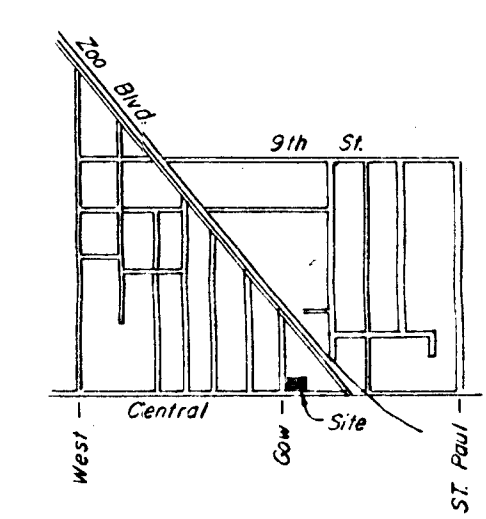


Legend -

- W = Water Main
- FH = Fire Hydrant
- G = Gas Main
- G.M. = Gas Meter
- T.P. = Telephone Pole
- O.T. = Overhead Telephone
- O.E. = Overhead Electric
- S.S. = Sanitary Sewer
- S.W.S. = Storm Water Sewer
- R = Property Line



Benchmark -  
S.E. Cor. Walk at NW. Prop. Cor.  
Elev. 118.97 City Datum.



Moehring & Associates  
Consulting Engineers  
Wichita  
Sept. 11, 1986

