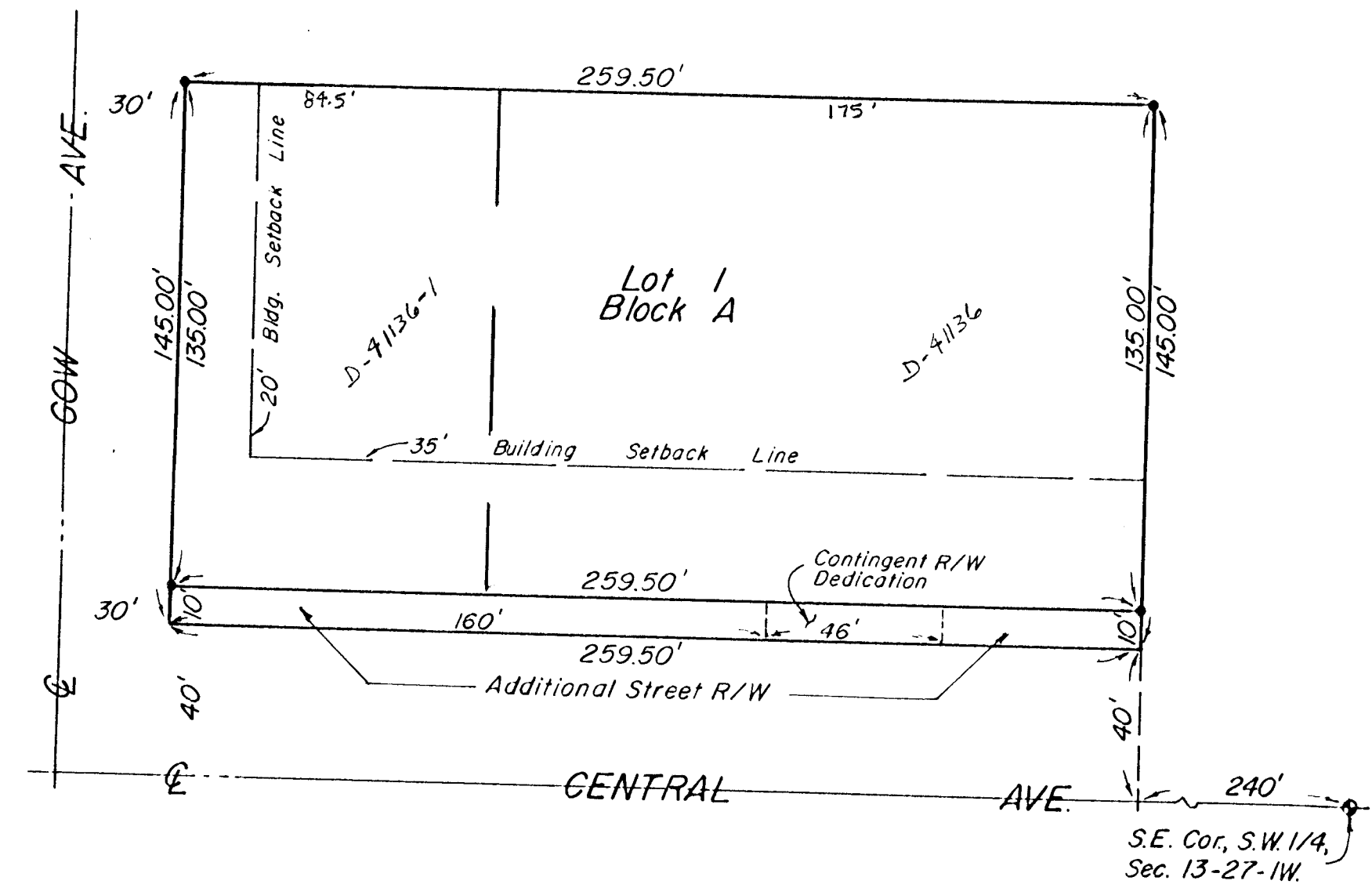
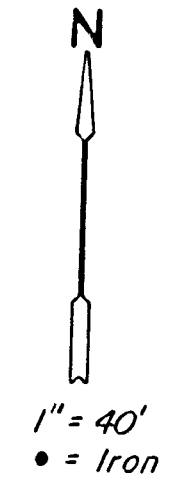


JOHN WEITZEL ADDITION

To Wichita, Sedgwick Co., Kansas



STATE OF KANSAS, COUNTY OF SEDGWICK, SS:

I, Don C. Moehring II, a Civil Engineer in said State and County, do hereby certify that I have surveyed and platted "JOHN WEITZEL ADDITION" to Wichita, Sedgwick County, Kansas, into a Lot, a Block, and a Street, the same being accurately set forth on the accompanying plat and described as being a Replat of Lots 3, 4 and 5, Davis Gardens, an Addition to Wichita, Sedgwick County, Kansas.

Don C. Moehring II
Consulting Engineer

Know all men by these presents that we the undersigned, property owners of the land as above set forth in the Civil Engineer's Certificate, have caused the same to be surveyed and platted into a Lot, a Block, and a Street, to be known as "JOHN WEITZEL ADDITION" to Wichita, Sedgwick County, Kansas. The street is hereby dedicated to and for the use of the public. The contingent street right-of-way dedication, as indicated on the accompanying plat, is hereby dedicated to and for the use of the public, conditioned upon the removal of the existing building, and shall be a covenant running with the land.

JOHN WEITZEL, INC.
Anthony P. Weitzel, Vice President

STATE OF KANSAS, COUNTY OF SEDGWICK, SS:

Be it remembered that this _____ day of _____, 1986, before me, a Notary Public in and for said State and County came John Weitzel, Inc. by Anthony P. Weitzel, Vice President, on behalf of the Corporation, to me personally known to be the same person who executed the foregoing instrument of writing and duly acknowledged the execution of the same on behalf of and as the act and deed of said Corporation. In testimony whereof I have hereunto set my hand and affixed my notarial seal the day and year above written.

Charlotte Fisher, Notary Public

My Commission Expires _____

This plat of "JOHN WEITZEL ADDITION" has been submitted to and approved by the Wichita-Sedgwick County Metropolitan Area Planning Commission.

Dated this _____ day of _____, 1986.

WICHITA-SEDGWICK COUNTY METROPOLITAN AREA PLANNING COMMISSION

David Bayouth, Vice Chairman

Michael E. Lindebak, Secretary

This plat has been approved and all dedications shown hereon, if any, accepted by the City Commission of the City of Wichita, Kansas, this _____ day of _____, 1986.

Tony Casado, Mayor

Donald C. Gisick, City Clerk

STATE OF KANSAS, COUNTY OF SEDGWICK, SS:

This is to certify that this instrument was filed for record in the Register of Deeds Office at _____ on the _____ day of _____, 1986.

Pat Kettler, Register of Deeds

Ed Resa, Deputy

Entered on transfer record this _____ day of _____, 1986.

Don Wright, County Clerk