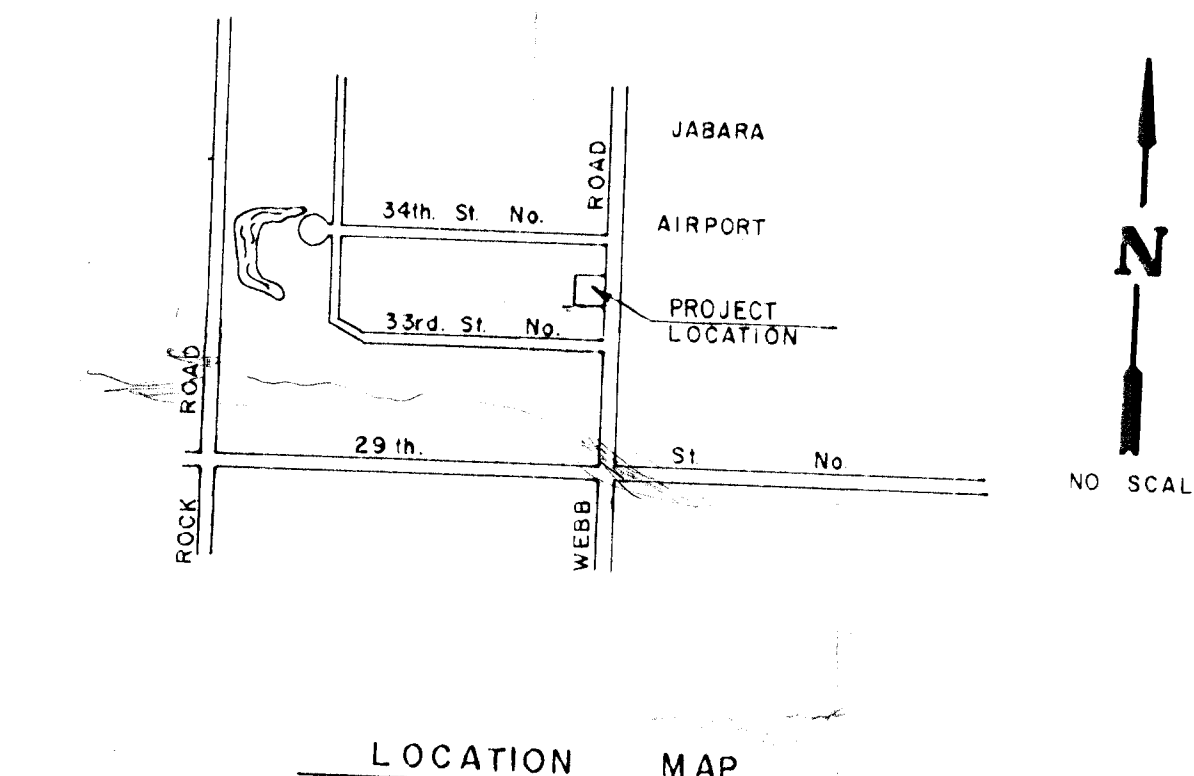
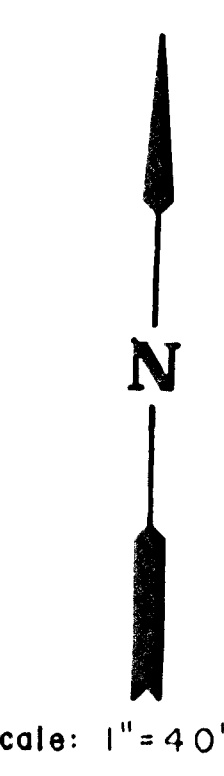
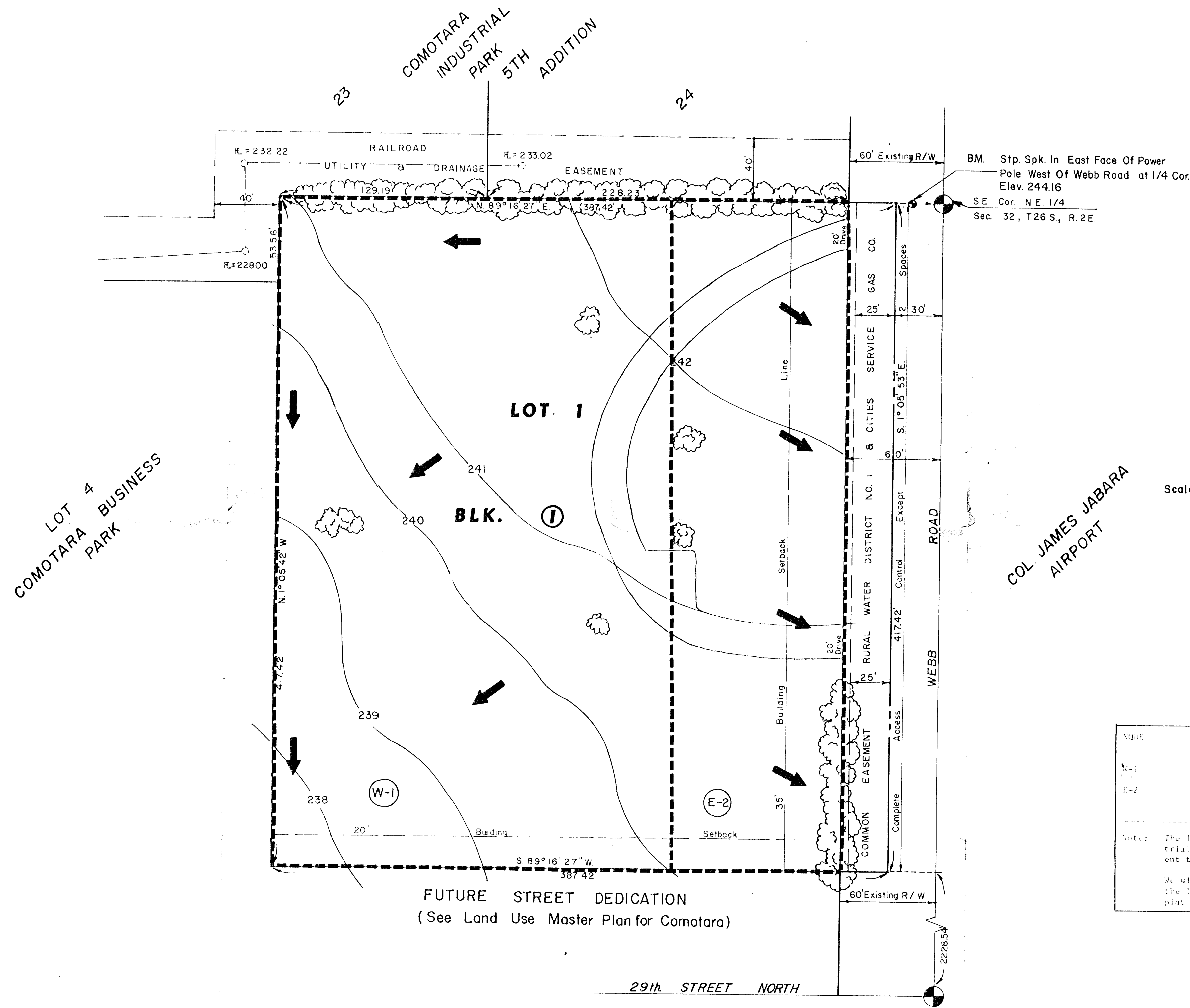


FINAL DRAINAGE PLAN FOR CORPORATE AIRPARK ADDITION



NOTE	Area	C	F	F ₁	F ₂	F ₃	F ₄
		ft ²	ft ²	ft ²	ft ²	ft ²	ft ²
N-1	2.4	0.7	13	4.06	8.98	6.8	2.8
E-2	1.0	0.7	13	4.06	8.98	15.1	6.1

Note: The land use master plan for Comotara indicates an industrial standard width street to run parallel to and adjacent to the south line of the proposed plat.

We will seek a cross drainage agreement or easement from the land owners to the south to satisfy the preliminary plat comments.

FINAL DRAINAGE PLAN

FOR

CORPORATE AIRPARK ADDITION

MID-KANSAS ENGINEERING CONSULTANTS PA
 240 NORTH ROCK ROAD SUITE 130
 WICHITA, KANSAS 67206 682-6561