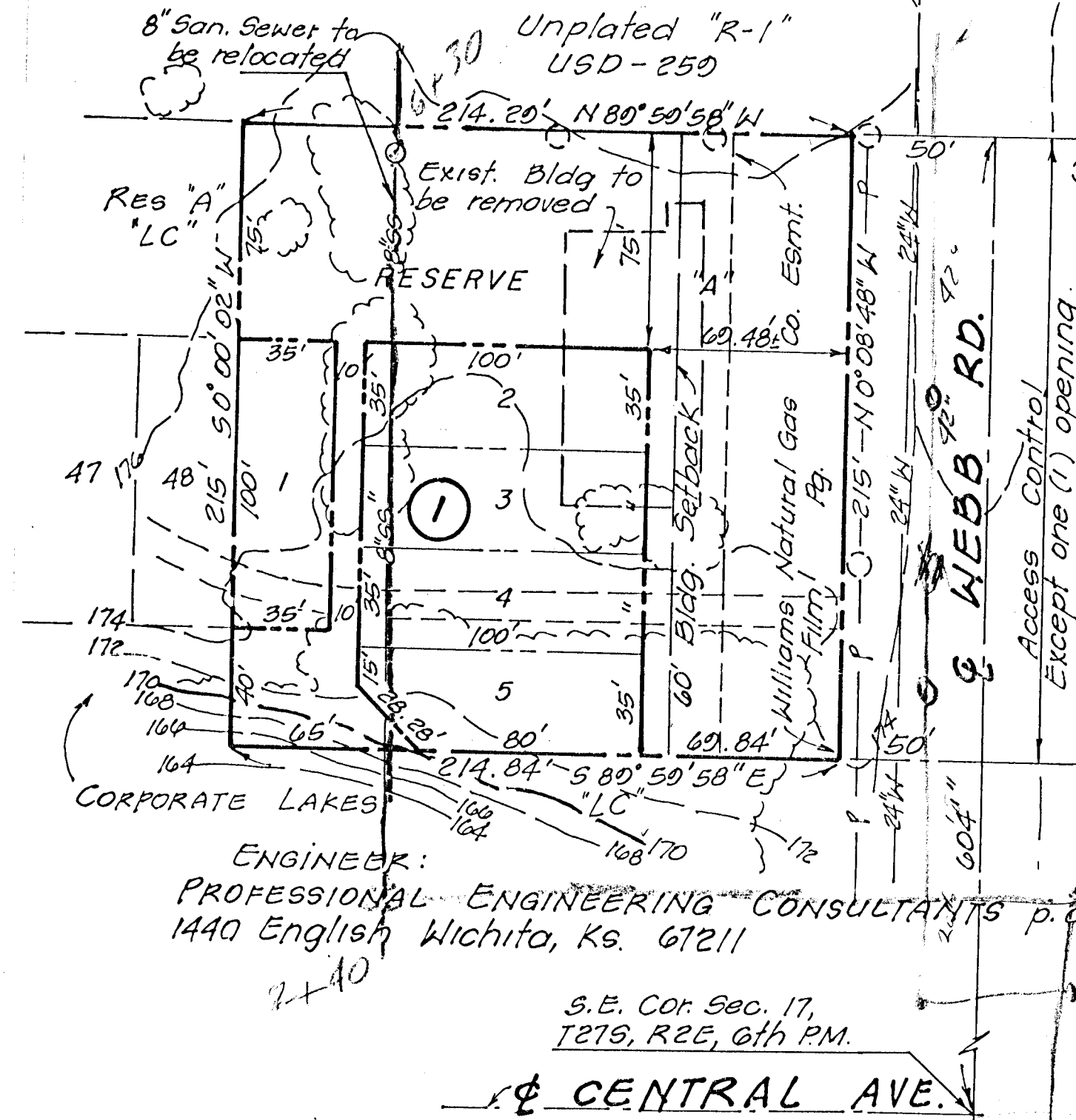


**AREA MAP OF
CORPORATE LAKES 2ND.**

OWNERS:
R. E. M. PROPERTIES
c/o Richard Vliet
P.O. Box 883 Wichita, Ks. 67201
B & W. DEVELOPMENT
c/o Tom Boyd
128 S. Dellrose Wichita, Ks. 67218

G 216
G 199
B 214
Webb Rel 5025
Central 10 13



ENGINEER:
PROFESSIONAL ENGINEERING CONSULTANTS P.C.
1440 English Wichita, Ks. 67211

Note:
Reserve "A" is platted for the construction & maintenance of public utilities, landscaping, irrigation systems, drainage, parking & private drives. The private drives within Reserve "A" are to provide access to lots 1 through 5 inclusive, Block 1.