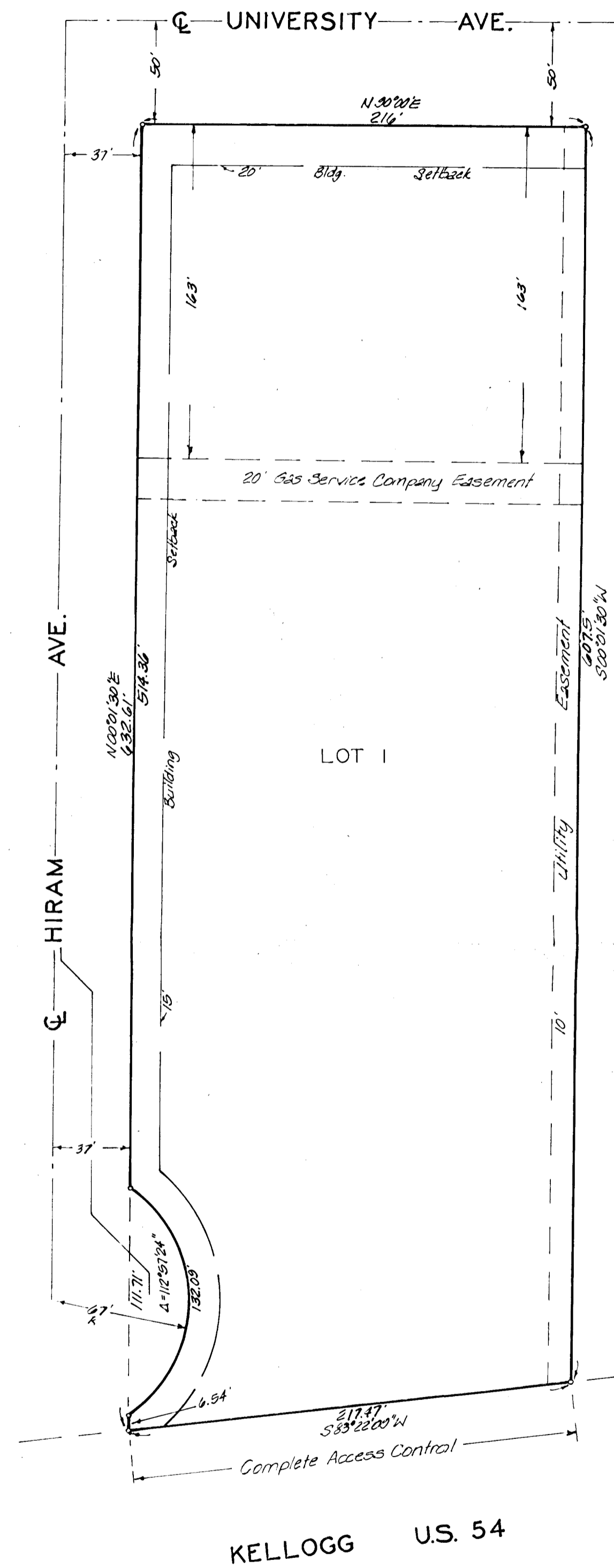


FRIENDS MANOR ADDITION

WICHITA, KANSAS

FINAL PLAT REVISED COPY



State of Kansas }
Sedgwick County } ss. We, Baughman Company, P.A.,
Surveyors in aforesaid County and state do hereby
certify that we have surveyed and platted "FRIENDS
MANOR ADDITION," Wichita, Kansas, and that the ac-
companying plat is a true and correct exhibit of
the property surveyed as and being a
replat of Lots 43-45-47-49-71-73-75-77-79-81-83-85-87-
89-91-93-95-97-99-101-103-105-107-109 and 111 on Hiram Ave.,
University Place Addition to Wichita, Kansas together
with the east 13 feet of Hiram Ave. adjacent thereto being
vacated by virtue of K.S.A. 12-512 (b). All being situated
in the NW 1/4 of Sec. 30, Twp. 27-S, R-1-E of the 4th P.M.,
Sedgwick County, Kansas.

Date _____
Baughman Company P.A.

Surveyor

Know all men by these presents
that we, the undersigned, have caused the land described
in the surveyors certificate to be platted into a
lot and street to be known as "FRIENDS MANOR
ADDITION," Wichita, Kansas. The street is hereby
dedicated to and for the use of the public. The utility
easements are hereby granted as indicated for the
construction and maintenance of public utilities.
All abutters rights of access to or from Kellogg Ave.
over and across the south line of Lot 1 are hereby
granted to the City of Wichita, Kansas.

Friends University, a Corporation

Title
Philip S. Whiteman Viola N. Whiteman
Orvil J. Pierce Dorothy R. Pierce

State of Kansas }
Sedgwick County } ss. The foregoing instrument was
acknowledged before me this _____ day of _____
198____, by Philip S. Whiteman, Viola N. Whiteman, his wife,
and Orvil J. Pierce, Dorothy R. Pierce, his wife, and
by _____ of
Friends University, a corporation, on behalf of the
corporation.

My App. Exp. _____ Notary Public

We, the undersigned, holders of
a mortgage on a portion of the above described
property do hereby consent to this plat of "FRIENDS
MANOR ADDITION," Wichita, Kansas.

Mid Kansas Federal Savings and Loan Association
of Wichita
by _____ Title

State of Kansas }
Sedgwick County } ss. The foregoing instrument was
acknowledged before me this _____ day of _____
198____, by _____ of
Mid Kansas Federal Savings and Loan Association of
Wichita, on behalf of the Savings and Loan.

My App. Exp. _____ Notary Public

This plat of "FRIENDS MANOR
ADDITION," Wichita, Kansas, has been submitted to
and approved by the Wichita-Sedgwick County Metro-
politan Area Planning Commission, Wichita, Kansas.
Dated this _____ day of _____ 198____.

Wichita-Sedgwick County Metropolitan Area Planning
Commission

Robert K. Chisholm Chairman
Robert A. Lakin Secretary

This plat approved and all dedi-
cations shown hereon accepted by the Board of
Commissioners of the City of Wichita, Kansas, this
_____ day of _____ 198____.

Margalee Wright Mayor
Donald C. Giesick City Clerk

This plat approved and all dedi-
cations shown hereon accepted by the Board of
Commissioners of Sedgwick County, Kansas, this
_____ day of _____ 198____.

Jack Spratt Chairman
Donald E. Bragg Commissioner
Tom Scott Commissioner
Dorothy K. White County Clerk

Entered on transfer record
this _____ day of _____ 198____.

Dorothy K. White County Clerk

State of Kansas }
Sedgwick County } ss. This is to certify that this plat
has been filed for record in the office of the Regi-
ster of Deeds this _____ day of _____ 198____,
at _____ o'clock _____ M; and is duly recorded.

Belle F. Meertz Register of Deeds
Pat Keller Deputy