

SKETCH PLAT FRIENDS UNIVERSITY ADDITION WICHITA, SEDGWICK COUNTY, KANSAS

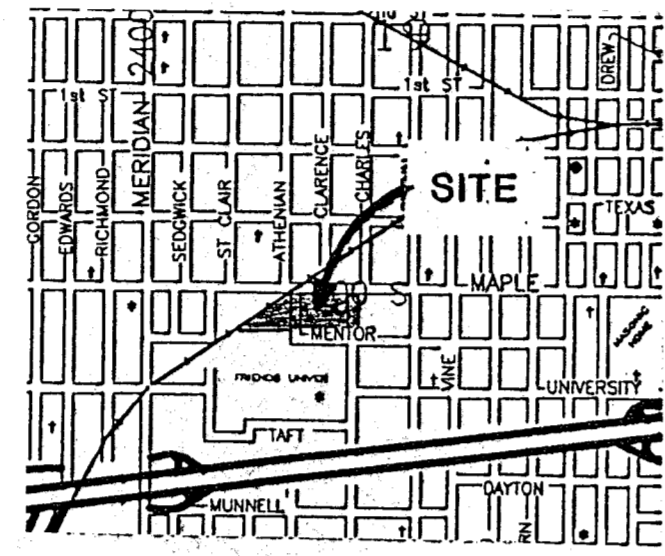


SCALE
1" = 50'

• = 1/2" REBAR W/ "BAUGHMAN" CAP (SET)

LEGEND

- - PINE TREE
- - DECIDUOUS TREE
- - GUARD POST
- - FIRE HYDRANT
- - LP
- - PP
- - GAS LIGHT
- - GAS TEST VALVE
- - WATER METER
- - SMB PED
- - VALVE BOX
- ⌋ - CUY WIRE

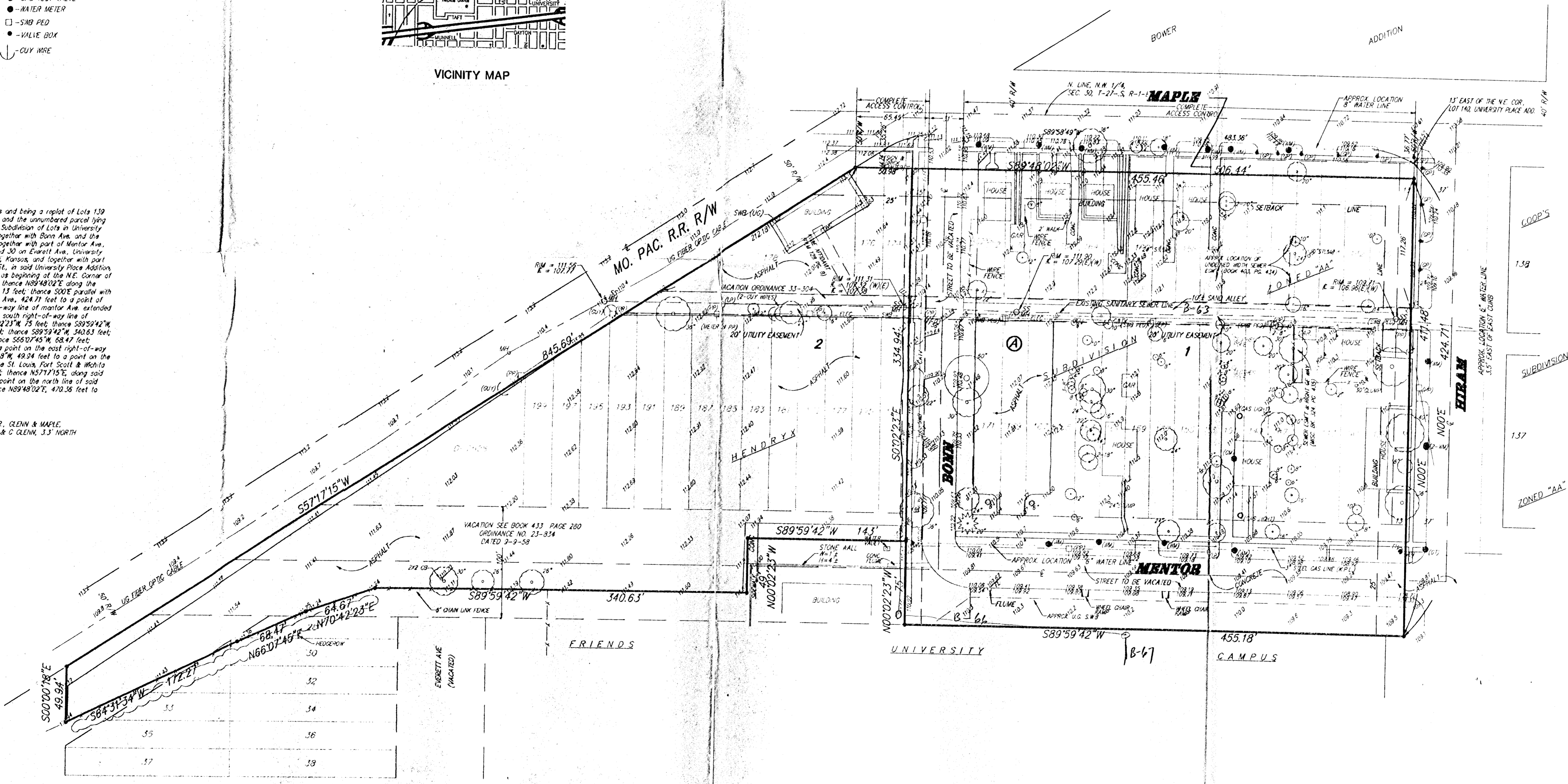


VICINITY MAP

OWNER:
FRIENDS UNIVERSITY
2100 UNIVERSITY
WICHITA, KANSAS 67215
PH. 316-261-5800

LEGAL:
A tract described as and being a replat of Lots 139 through 199 odd and even inclusive, and the unnumbered parcel lying west of said Lot 199, all in Hendrix Subdivision of Lots in University Place Addition to Wichita, Kansas, together with Bonn Ave. and the alleys lying between said lots, and together with part of Mentor Ave., Haron Ave., and part of Lots 28, and 30 on Everett Ave., University Place Addition to the City of Wichita, Kansas, and together with part of Lots 11, 13, and 15 on St. Clair St., in said University Place Addition, all being more particularly described as beginning at the N.E. Corner of Lot 140 in said Hendrix Subdivision; thence N89°48'02"E along the extended north line of said Lot 140, 15 feet; thence S00°E parallel with the west right-of-way line of Haron Ave., 424.71 feet to a point of intersection with the south right-of-way line of Mentor Ave. extended east; thence S89°59'42"W along said south right-of-way line of Mentor Ave., 455.18 feet; thence N00°02'23"W, 75 feet; thence S89°59'42"W, 143 feet; thence S00°02'23"E, 49 feet; thence S89°59'42"W, 340.63 feet; thence S70°42'23"W, 64.67 feet; thence S66°07'45"W, 68.47 feet; thence S89°59'42"W, 172.27 feet to a point on the east right-of-way line of St. Clair St.; thence N00°02'23"W, 49.94 feet to a point on the southeasterly right-of-way line of the St. Louis, Fort Scott & Wichita Railroad now Missouri Pacific Railroad; thence N57°17'15"E, along said right-of-way line, 845.69 feet to a point on the north line of said Lot 139 in Hendrix Subdivision; thence N89°48'02"E, 470.36 feet to the point of beginning.

BENCHMARK:
BRASS ROD IN CONC. POST, S.W. COR. GLENN & MAPLE,
28' N. & 12' N. OF SOUTH P. MAPLE & G. GLENN, 33' NORTH
OF NORTH FACE OF WALK.
ELEV. = 1091.14 CITY DATUM



COOP'S
1.38
SUBDIVISION
1.37
ZONED "AA"