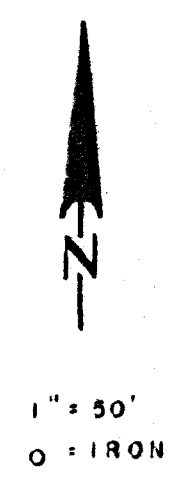
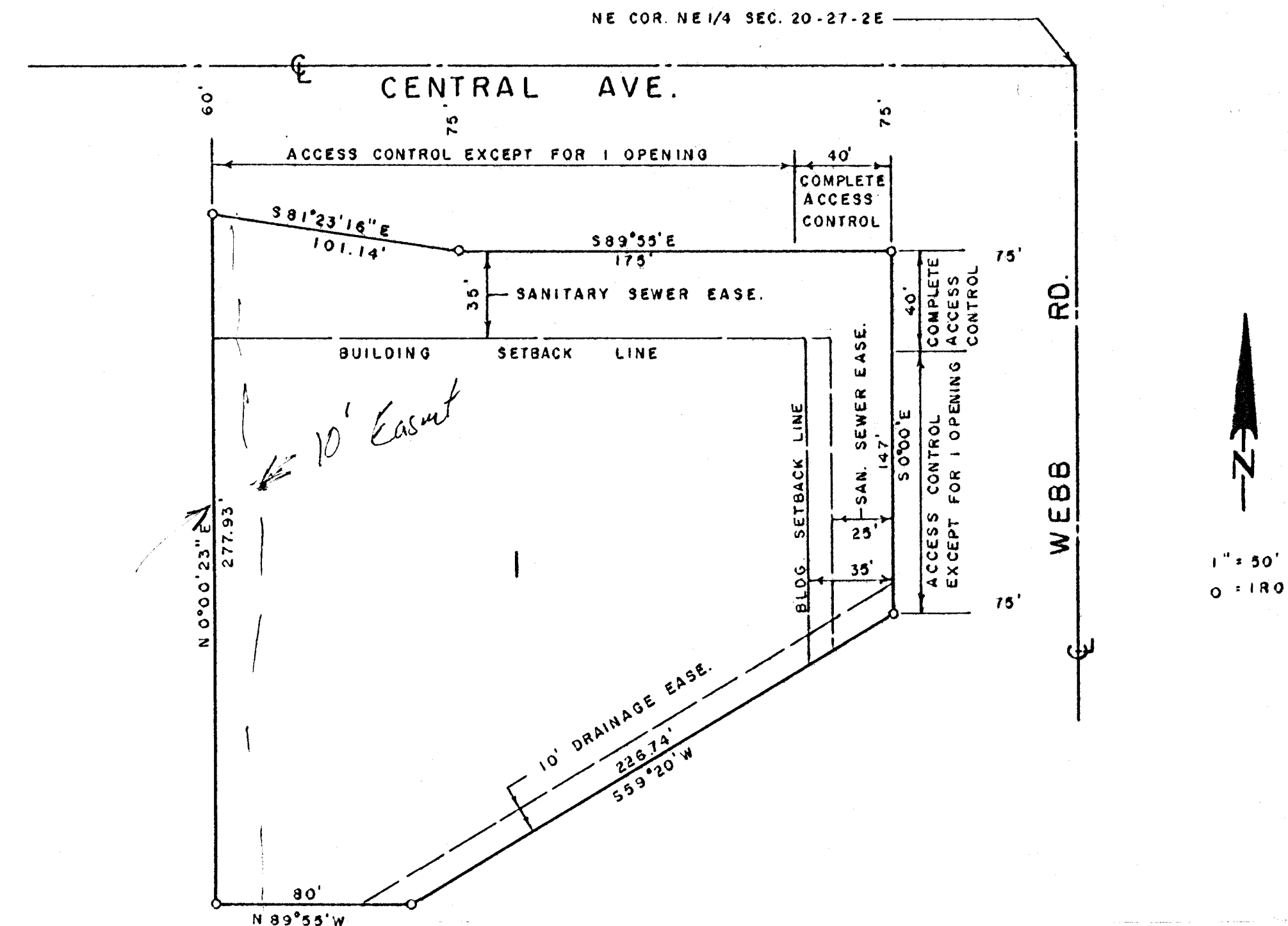


FOREST HILLS OFFICE PARK SECOND ADDITION

WICHITA, SEDGWICK COUNTY, KANSAS



This plat approved and all dedications shown hereon, if any, accepted by the Board of City Commissioners of the City of Wichita, Kansas, this _____ day of _____, 19____.

_____, Mayor
Robert G. Knight
_____, City Clerk
Donald G. Gislack

This plat approved and all dedications shown hereon, if any, accepted by the Board of County Commissioners of Sedgwick County, Kansas, this _____ day of _____, 19____.

_____, Chairman
Everett Patrick
_____, Commissioner
Tom Scott
ATTEST: _____, Commissioner
Donald E. Gragg
_____, County Clerk
Dorothy K. White

Entered on transfer record this _____ day of _____, 19____.
_____, County Clerk
Dorothy K. White

State of Kansas, County of Sedgwick, SS.
This is to certify that this instrument was filed for record in the Register of Deeds Office, at _____ o'clock _____ m., on the _____ day of _____, 19____.
_____, Register of Deeds
Bette F. McCart
_____, Deputy
Pat Kettler

State of Kansas, County of Sedgwick, SS.

I, Lowell D. High, Land Surveyor in said State and County do hereby certify that I have surveyed and platted "FOREST HILLS OFFICE PARK SECOND ADDITION", Wichita, Sedgwick County, Kansas and that the accompanying plat is A REPLAT OF Forest Hills Office Park, Wichita, Sedgwick County, Kansas and part of Forest Park Shops, an Addition to Wichita, Kansas and a true and correct exhibit of said survey described as follows: All of Lot 1, Forest Hills Office Park, Wichita, Sedgwick County, Kansas and part of Lot 2, Forest Park Shops, an Addition to Wichita, Kansas, described as follows: Beginning at the NW corner of Lot 1, Forest Hills Office Park, Wichita, Sedgwick County, Kansas, thence S0°00'00"E along the west line of said Lot 1, 265.94 feet to the SW corner of said Lot 1 in said Forest Hills Office Park, thence N89°55'W, 80 feet; thence north 277.93 feet to a point on the north line of said Lot 2 in said Forest Park Shops, 210 feet east of the NW corner of said Lot 2; thence southeasterly on said north line of said Lot 2, 80.88 feet to the point of Beginning.

_____, Land Surveyor
Lowell D. High

Know all men by these presents that FlightSafety International, Inc., by A. L. Ueltschi, President, has caused the land described in the Land Surveyor's certificate to be platted into a lot to be known as "FOREST HILLS OFFICE PARK SECOND ADDITION", Wichita, Sedgwick County, Kansas.

Sanitary sewer easements as indicated on the plat are hereby granted for the construction and maintenance of sanitary sewers.

The drainage easement as indicated on the plat is hereby granted for drainage purposes.

All abutter's rights of access to or from Central Avenue over and across the north line of Lot 1 and all abutter's rights of access to or from Webb Road over and across the east line of Lot 1 are hereby granted to the City of Wichita, provided, however that Lot 1 shall have access to Central Avenue at one location over the north line of Lot 1, except the east 40 feet thereof and Lot 1 shall have access to Webb Road at one location over the south 107 feet of the east line of Lot 1, such locations to be designated by the City Engineer of Wichita, Kansas.

_____, FlightSafety International, Inc.
A. L. Ueltschi, President
ATTEST: _____

State of New York, County of Queens, SS.

The foregoing instrument was acknowledged before me this _____ day of _____, 19____, by A. L. Ueltschi, President of Flight-Safety International, Inc., a New York corporation, on behalf of the corporation.

_____, Notary Public

My Commission expires: _____

This plat of "FOREST HILLS OFFICE PARK SECOND ADDITION", Wichita, Sedgwick County, Kansas has been submitted to and approved by the Wichita-Sedgwick County Metropolitan Area Planning Commission, Wichita, Kansas.

Dated this _____ day of _____, 19____.
_____, Chairman
Michael J. Savina
_____, Secretary
Robert A. Lakin