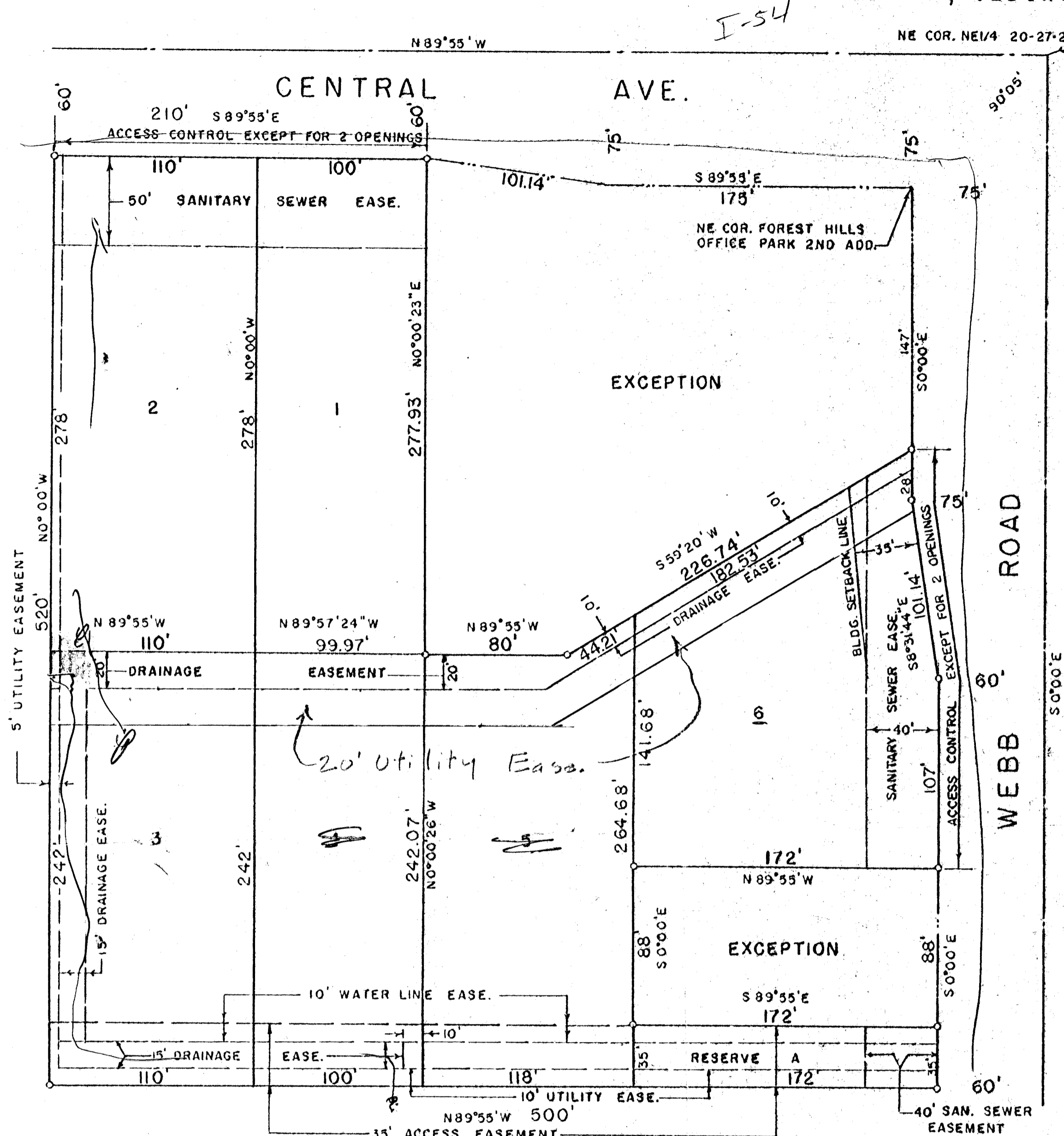


# FOREST HILLS OFFICE PARK THIRD ADDITION

WICHITA, SEDGWICK COUNTY, KANSAS



MINIMUM PAD ELEVATION 171

This plat approved and all dedications shown hereon accepted by the Board of County Commissioners of Sedgwick County, Kansas this \_\_\_\_\_ day of \_\_\_\_\_, 19\_\_\_\_.

\_\_\_\_\_  
Chairman  
\_\_\_\_\_  
Commissioner  
\_\_\_\_\_  
Commissioner  
\_\_\_\_\_  
County Clerk  
Entered on transfer record this \_\_\_\_\_ day of \_\_\_\_\_, 19\_\_\_\_.  
\_\_\_\_\_  
County Clerk

State of Kansas, County of Sedgwick, SS.  
This is to certify that this instrument was filed for record in the Register of Deeds Office, at \_\_\_\_\_ o'clock \_\_\_\_\_ m., on the \_\_\_\_\_ day of \_\_\_\_\_, 19\_\_\_\_.  
\_\_\_\_\_  
Register of Deeds  
\_\_\_\_\_  
Deputy

State of Kansas, County of Sedgwick, SS.  
I, Lowell D. High, Land Surveyor in said State and County do hereby certify that I have surveyed and platted "FOREST HILLS OFFICE PARK THIRD ADDITION", Wichita, Sedgwick County, Kansas and that the accompanying plat is a RIGHT OF and a true and correct exhibit of said survey described as follows: Part of Lots 1 and 2, Forest Park Shops, an Addition to Wichita, Kansas described as follows: Beginning at the NW corner of said Lot 2; thence 389°55'E on the north line of said Lot 2, 210 feet; thence 90°00'23"W, 277.93 feet; thence S89°55'E, 80 feet; thence N59°20'E, 226.74 feet to the east line of said Lot 1; thence 90°00'E on said east line of Lot 1, 28 feet; thence S8°31'44"E on the east line of said Lot 2, 101.44 feet; thence S0°00'E on said east line of said Lot 2, 107 feet to a point 123 feet north of the SE corner of said Lot 2; thence N89°55'W, 172 feet; thence S0°00'E, 38 feet to a point 35 feet north of the south line of said Lot 2; thence S89°55'E, 172 feet to the east line of said Lot 2; thence S0°00'E, 35 feet to the SE corner of said Lot 2; thence N89°55'W, 500 feet to the SW corner of said Lot 2; thence N0°00'W, 120 feet to the point of Beginning.

Lowell D. High, Land Surveyor  
Know all men by these presents that I, Jan G. Siefkes, a single woman and Janice G. Siefkes, Executrix of the Estate of John B. Siefkes, has caused the land described in the Land Surveyor's certificate to be platted into lots and a reserve to be known as "FOREST HILLS OFFICE PARK THIRD ADDITION", Wichita, Sedgwick County, Kansas. Reserve A is reserved for ingress and egress to Lots 3, 4 and 5.

All abuttee's rights of access to or from Central Avenue, over and across the north line of Lots 1 and 2 are hereby granted to the City of Wichita, provided, however, that Lots 1 and 2 shall have access to Central Avenue at two locations to be designated by the City Engineer of Wichita, Kansas.

All abuttee's rights of access to or from Webb Road, over and across the east line of Lots 3, 4 and 5 are hereby granted to the City of Wichita, provided, however, that Lot 3 shall have access to Webb Road at two locations to be designated by the City Engineer of Wichita, Kansas.

Utility easements as indicated on the plat are hereby granted for the construction and maintenance of all public utilities.

Drainage easements as indicated on the plat are hereby granted for drainage purposes.

The water line easement as indicated on the plat is hereby granted for the construction of a water line and appurtenances.

The access easement as indicated on the plat is hereby granted for ingress and egress to Lots 3, 4 and 5.

No structure shall be constructed below a minimum pad elevation of 171, City of Wichita datum.

\_\_\_\_\_  
Janice G. Siefkes, Executrix of the Estate of John B. Siefkes  
\_\_\_\_\_  
Jan G. Siefkes

State of Kansas, County of Sedgwick, SS.  
The foregoing instrument was acknowledged before me this \_\_\_\_\_ day of \_\_\_\_\_, 19\_\_\_\_, by Janice G. Siefkes, Executrix of the Estate of John B. Siefkes, on behalf of the Estate of John B. Siefkes.  
\_\_\_\_\_  
Notary Public

My Commission expires: \_\_\_\_\_  
State of Kansas, County of Sedgwick, SS.  
The foregoing instrument was acknowledged before me this \_\_\_\_\_ day of \_\_\_\_\_, 19\_\_\_\_, by Jan G. Siefkes, a single woman.  
\_\_\_\_\_  
Notary Public

My Commission expires: \_\_\_\_\_  
This plat of "FOREST HILLS OFFICE PARK THIRD ADDITION", Wichita, Sedgwick County, Kansas has been submitted to and approved by the Wichita-Sedgwick County Metropolitan Area Planning Commission, Wichita, Kansas.  
Dated this \_\_\_\_\_ day of \_\_\_\_\_, 19\_\_\_\_.

\_\_\_\_\_  
Wichita-Sedgwick County Metropolitan Area Planning Commission  
\_\_\_\_\_  
Chairman  
\_\_\_\_\_  
Secretary

This plat approved and all dedications shown hereon accepted by the Board of City Commissioners of the City of Wichita, Kansas this \_\_\_\_\_ day of \_\_\_\_\_, 19\_\_\_\_.  
\_\_\_\_\_  
Mayor  
\_\_\_\_\_  
City Clerk

*Mike:*  
I omitted showing an easement for sewer to serve lots 3, 4 and 5 on the prints submitted for subd. hearing. This print shows a proposed location for such easement.

*K. O. Paylor*  
11-19-80