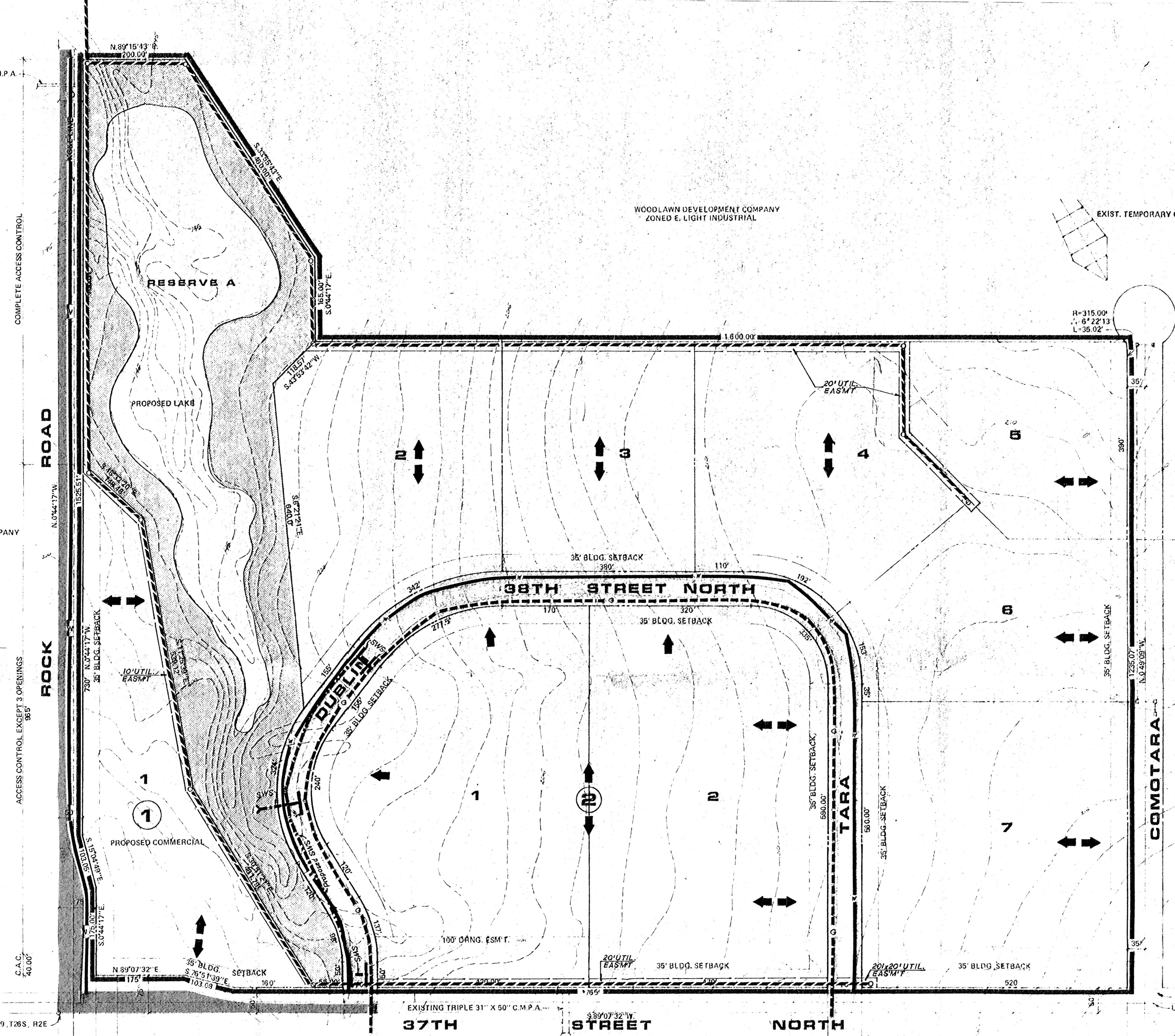


EXIST. DOUBLE 36" X 58" C.M.P.A.



WOODLAWN DEVELOPMENT COMPANY
ZONED E. LIGHT INDUSTRIAL

EXIST. TEMPORARY CHANNEL

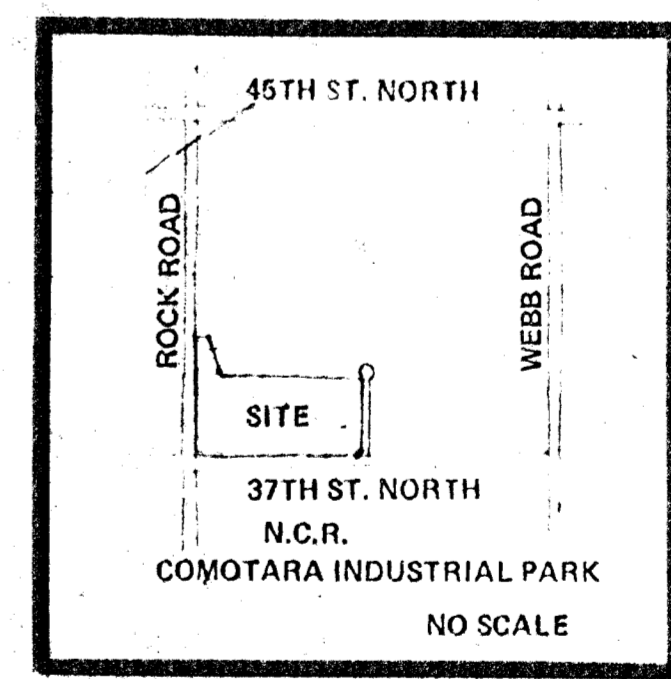
R=315.00'
Δ=6°22'13"
L=35.02'

EXIST. TEMPORARY CUL-DE-SAC

NORTH POINT IND. PARK ADDITION
E. LIGHT INDUSTRIAL

WOODLAWN DEVELOPMENT COMPANY
ZONED E. LIGHT INDUSTRIAL

ACCESS CONTROL EXCEPT 1 OPENING
ACCESS CONTROL EXCEPT 2 OPENINGS
ACCESS CONTROL EXCEPT 1 OPENING
ACCESS CONTROL EXCEPT 2 OPENINGS



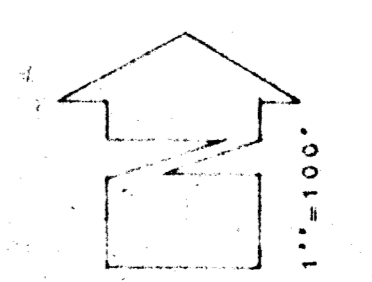
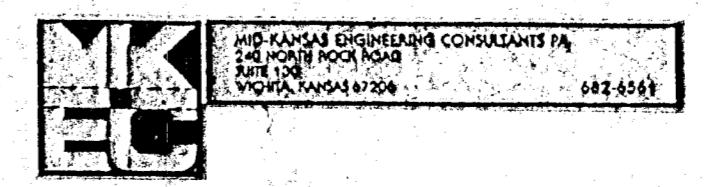
LOCATION MAP

LEGEND

- = PROPOSED SAN SWR
- = WATER
- = GAS
- = WATER DRAINAGE
- = SWS

DRAINAGE AND UTILITY CONCEPT PLAN

COMOTARA HI-TECH CENTER



OWNER: WOODLAWN DEVELOPMENT COMPANY, 3500 N. ROCK ROAD, NO. 100, WICHITA, KA 67238