

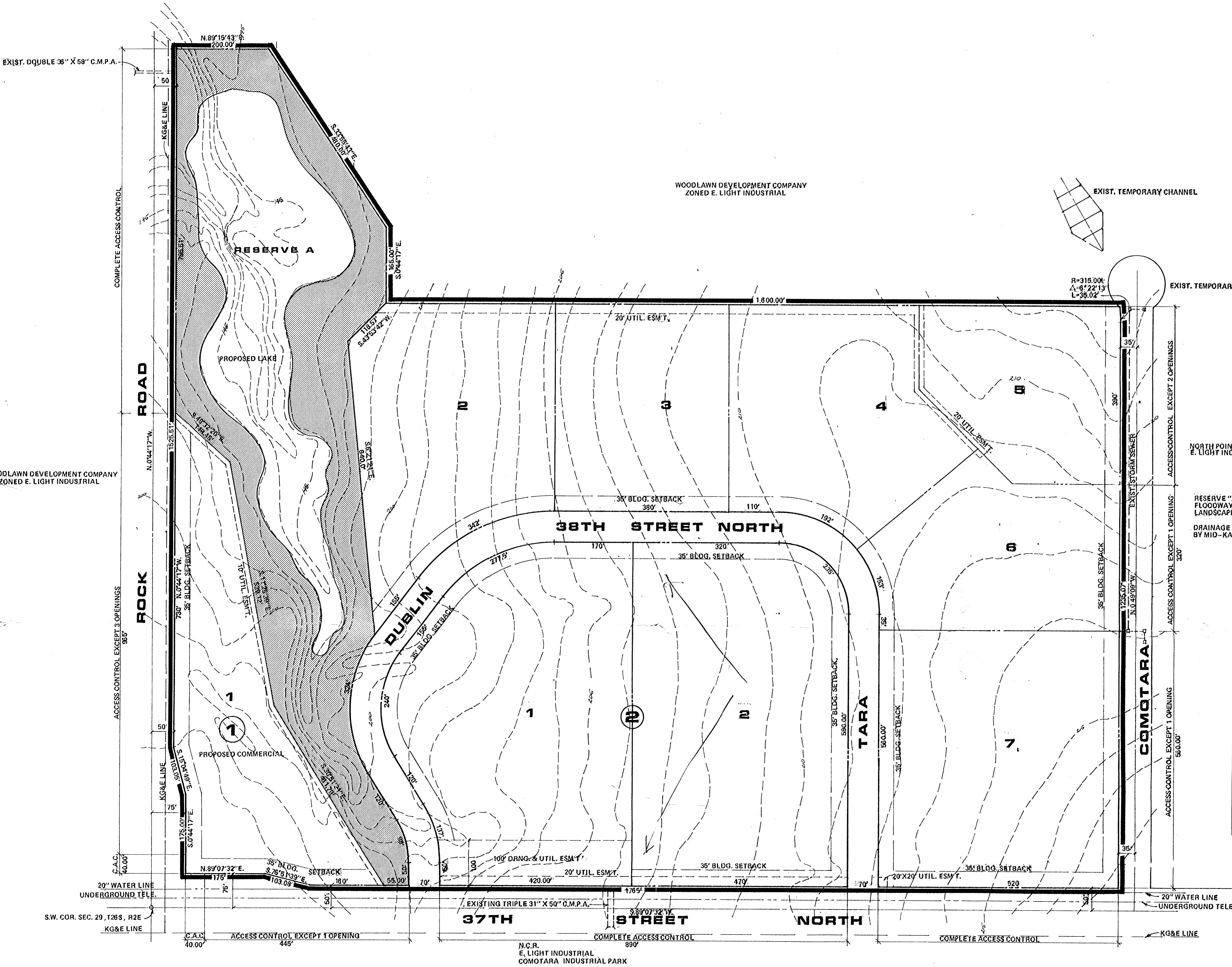
BILL G. YUNG DESIGN
8225 E. 35 TH. ST. NORTH, WICHITA, KS. 67226
316-683-5667

date NOVEMBER 16, 1984
rev. NOV. 28, 1984

sheet title
PRELIMINARY PLAT

project
COMOTARA HI-TECH CENTER

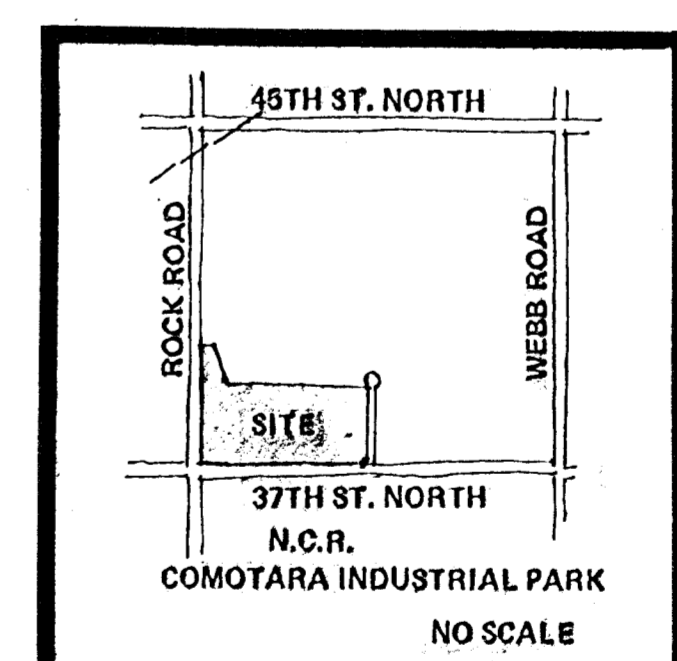
sheet
of



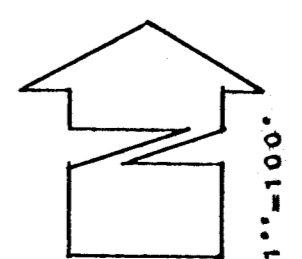
NORTH POINT IND. PARK ADDITION,
E. LIGHT INDUSTRIAL

NOTES

RESERVE "A" IS FOR CONSTRUCTION AND MAINTENANCE OF FLOODWAYS, PUBLIC UTILITIES, DRAINAGE, OPEN SPACE, LANDSCAPING AND RELATED RECREATIONAL USES.
DRAINAGE AND UTILITY CONCEPT PLAN TO BE PREPARED BY MID-KANSAS ENGINEERING CONSULTANTS.



LOCATION MAP



PRELIMINARY PLAT COMOTARA HI-TECH CENTER

OWNER: WOODLAWN DEVELOPMENT COMPANY, 3500 N. ROCK ROAD, NO. 100, WICHITA, KANSAS 67228