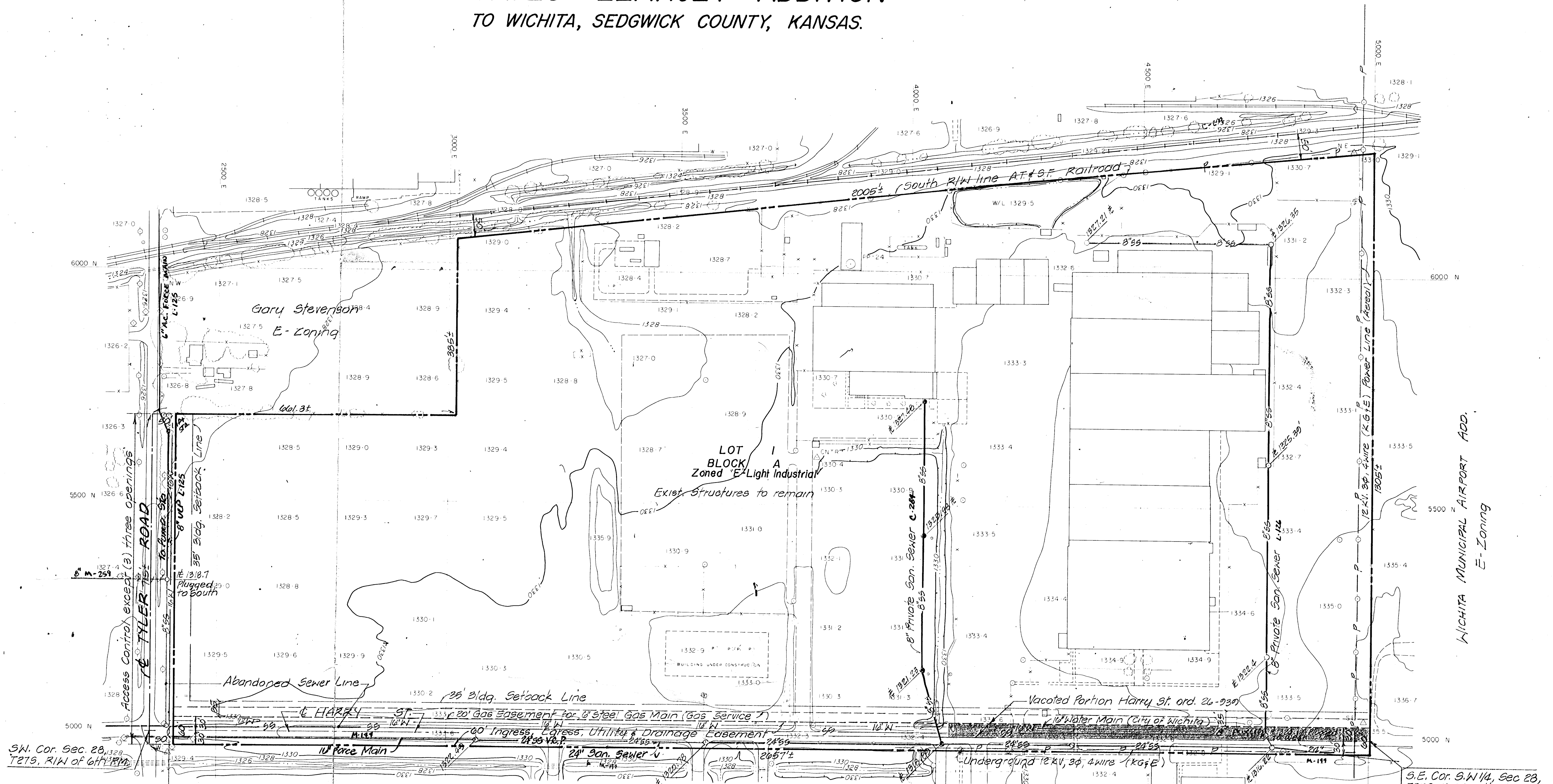


**PRELIMINARY PLAT OF
GATES LEARJET ADDITION
TO WICHITA, SEDGWICK COUNTY, KANSAS.**

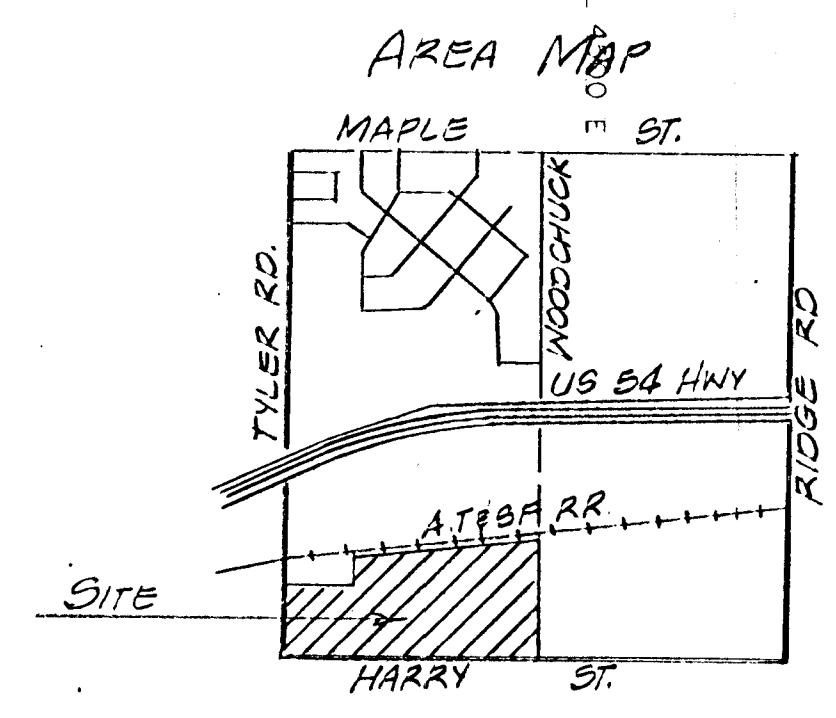


OWNER: Gates Learjet Corporation
 c/o Harold Hubbard
 P.O. Box 7107
 Wichita, Ks.
 ENGINEER: Professional Engineering Consultants P.A.
 Land Division, 355 Ellis
 Wichita, Ks. 67211

WICHITA MUNICIPAL AIRPORT ADD.
 "E"-Zoning
 Notes: No Storm Sewer
 Teleph: Buried Cable on South
 side of Harry (S. Western Bell)

TOPOGRAPHIC MAP OF LANDS LOCATED AT
 S.W. 1/4 SECTION 28, 27S.1/W.

PREPARED FOR
 P. E. C.-ALLIED LABORATORIES



B.M. Tyler & U.S. 54 Highway
 City of Wichita B.M. disc, 3 1/2 ft.
 West center Tyler & 88.2 ft. South
 S.E. of center US 54 Pavmt.
 E1 = 1328.046 m.s.l.

SCALE 100' TO 1"
 0 100' 200' 300'
 CONTOUR INTERVAL 2 FT.

Aug. 1981

PHOTOGRAMMETRY BY
 MILES AIR PHOTO SURVEY
 TYPE VERTICAL, 40%
 ALTITUDE 3,000 M.S.L.
 DATE/S OBTAINED: 19 AUG 1981