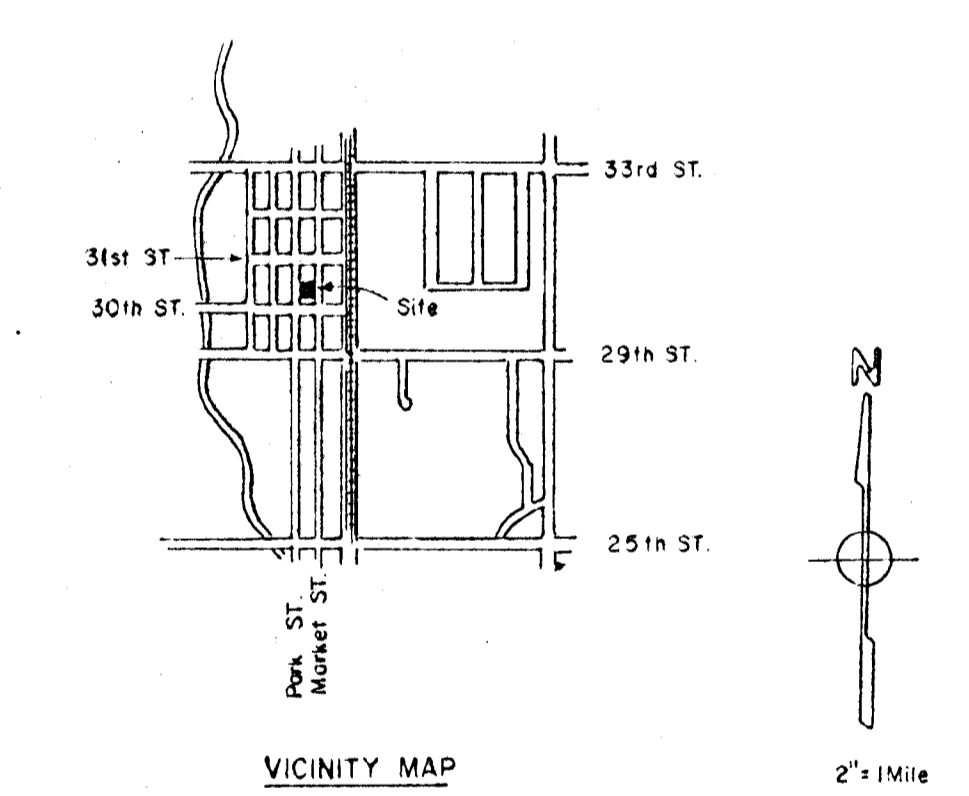


TOPOGRAPHY AND VICINITY MAP
FOR
HERRING FIRST ADDITION
TO WICHITA, SEDGWICK COUNTY, KANSAS

* LEGAL DESCRIPTION
Lots 34 through 43, Block 22, Jones
Park Addition, to North Wichita.



NOTE: 8" San. Sewer 4' W. of E. Line
Market Street.

BENCH MARK: Top of Iron at N.E. Property Corner
Elev. 126.37 City Datum.

MOEHRING & ASSOCIATES
CONSULTING ENGINEERS
WICHITA
81-086-SD JUNE 1981