

SKETCH PLAT

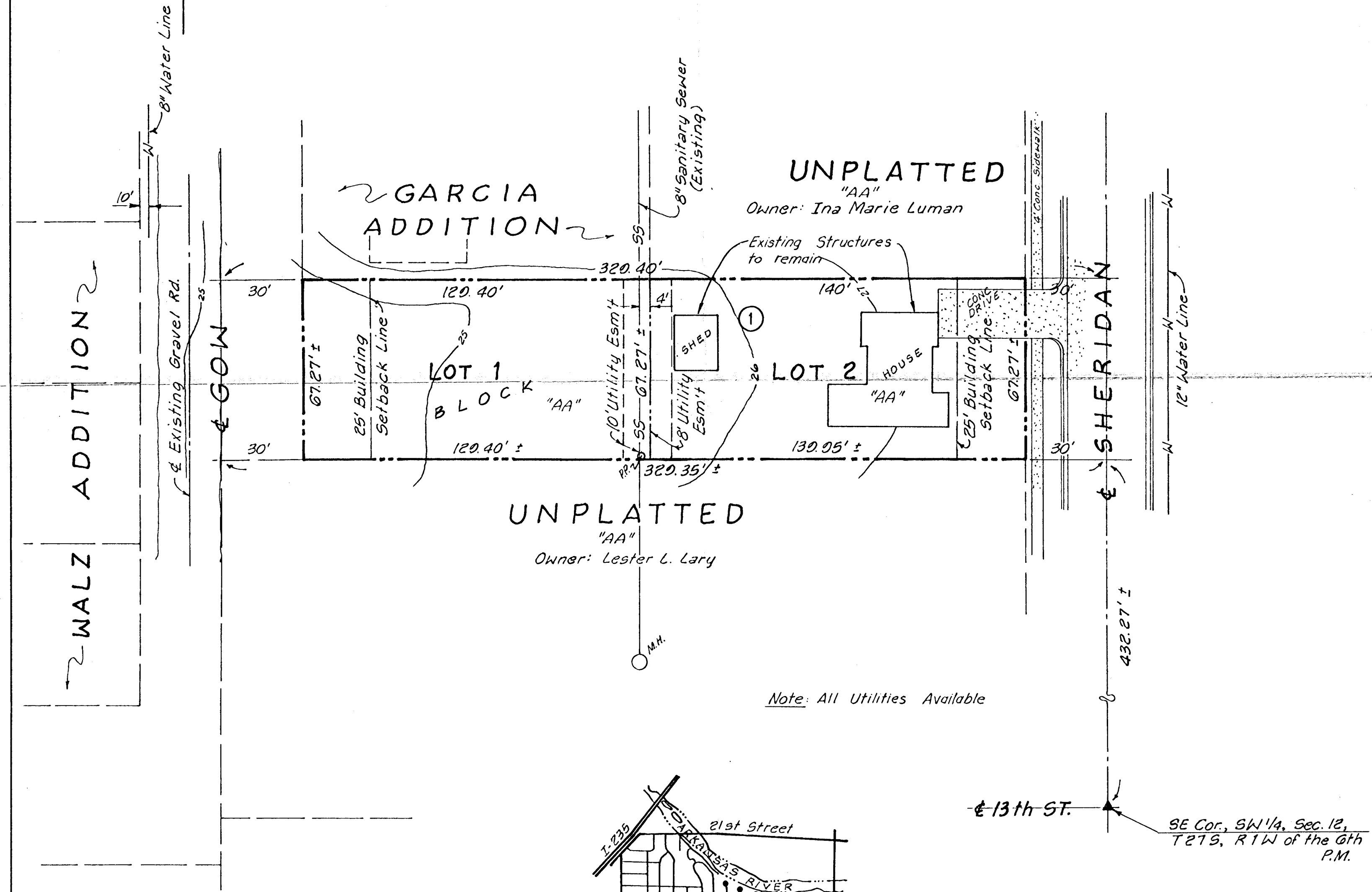
PRELIMINARY PLAT

Hess Addition - TO

WICHITA, SEDGWICK COUNTY, KS.

Owner: Leo R. Hess
1501 N. Sheridan
Wichita, Kansas
Engineer: Professional Engineering Consultants, P.A.
1440 E. English
Wichita, Kansas 67211

Scale: 1" = 30'
March 31, 1981
BM- City Standard BM @
N.E. Cor. 13th & Sheridan
Elev. 125.72 City Datum
1313.12 MSL



Note: All Utilities Available

