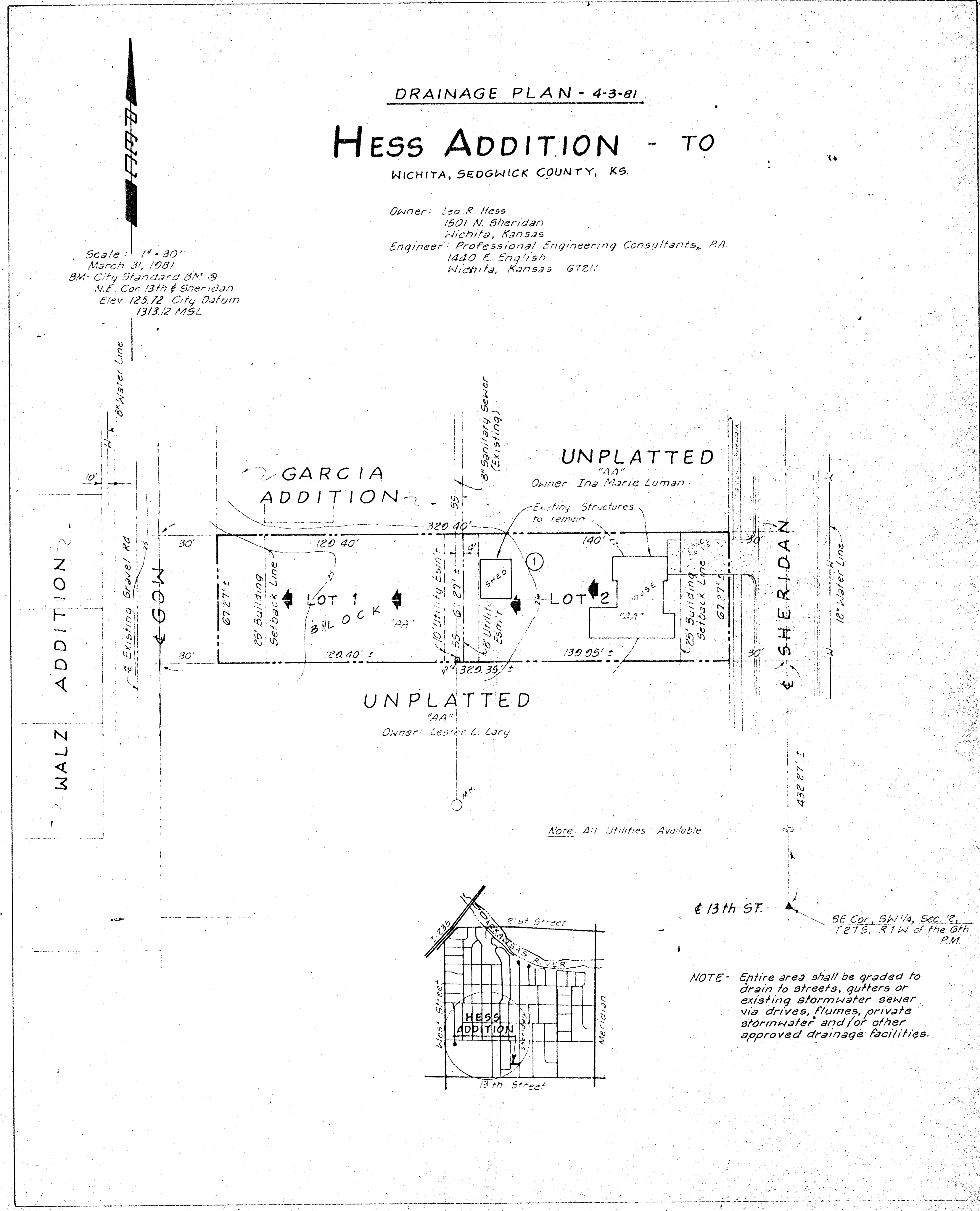


DRAINAGE PLAN - 4-3-81

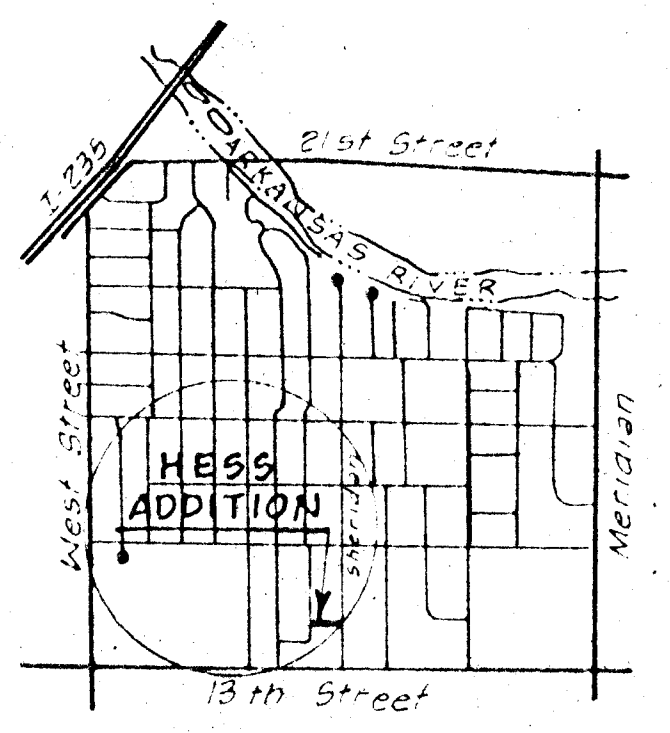
HESS ADDITION - TO WICHITA, SEDGWICK COUNTY, KS.

Owner: Leo R. Hess
1501 N. Sheridan
Wichita, Kansas
Engineer: Professional Engineering Consultants, P.A.
1440 E. English
Wichita, Kansas 67211

Scale: 1" = 30'
March 31, 1981
BM - City Standard BM @
N.E. Cor. 13th & Sheridan
Elev. 125.72 City Datum
1313.12 MSL



Note: All Utilities Available



SE Cor., SW 1/4, Sec. 12,
T21S, R1W of the 6th
P.M.

NOTE - Entire area shall be graded to
drain to streets, gutters or
existing stormwater sewer
via drives, flumes, private
stormwater and/or other
approved drainage facilities.