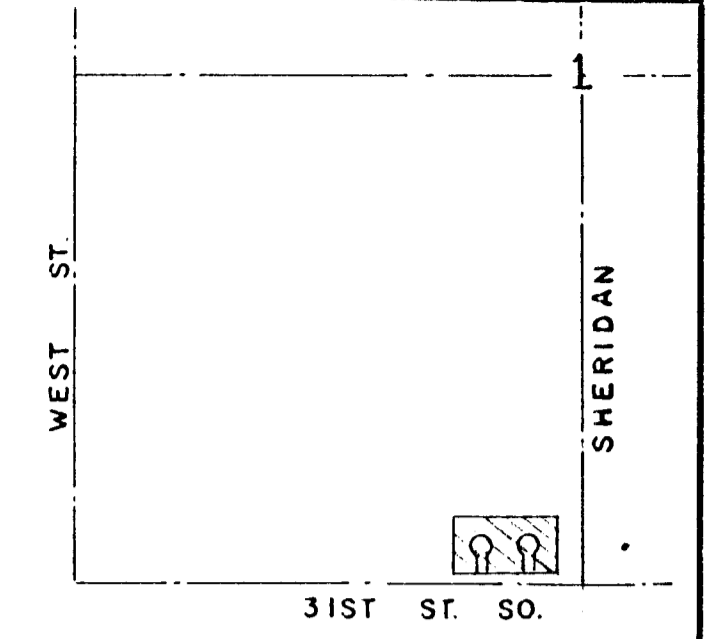
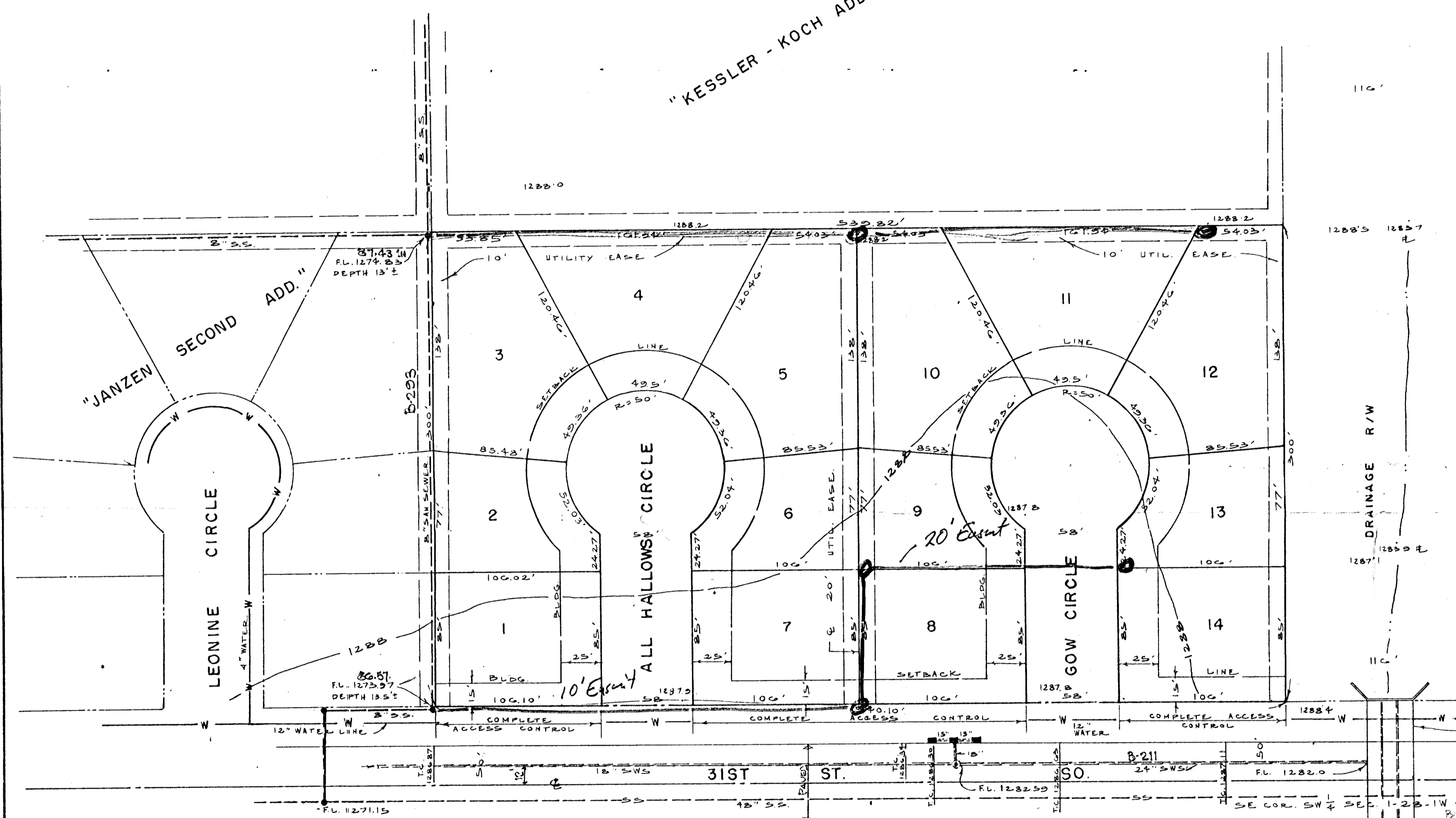
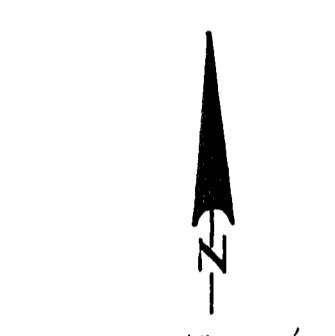


B.M. - ELEV. 1290.57 M.S.L. - STANDARD TABLET 44' S. & 31ST ST. 30. AND 53' E. & WEST ST.

"KESSLER - KOCH ADDITION"



VICINITY MAP  
1" = 1000'



TOPO MADE APRIL, 1975

PRELIMINARY PLAT  
JANZEN THIRD ADDITION

OWNER: KOCH INDUSTRIES, INC.  
SUBDIVIDER: FRANK M. KESSLER

KENNETH O. TAYLOR, P.E.  
SEPTEMBER 10, 1980

LEONINE

"FOURTH" ADD.

ALL HALLOWS

TO SOUTHWEST

GOW

VILLAGE "