

BAUGHMAN COMPANY, P.A.
SURVEYING & ENGINEERING
316/262-7271 • 330 LAURA • WICHITA, KANSAS 67211

CONFIRMATION
MEMO

PROJECT LARRY SCHNEIDER 1st ADJ.

DATE 11-12-81

JOB NO. _____

TO CHRIS BREITENSTEIN

COPIES TO:

FROM N. B. WOOTEN

REFERENCE FINAL DRAINAGE PLAN

Approved 2/17/82

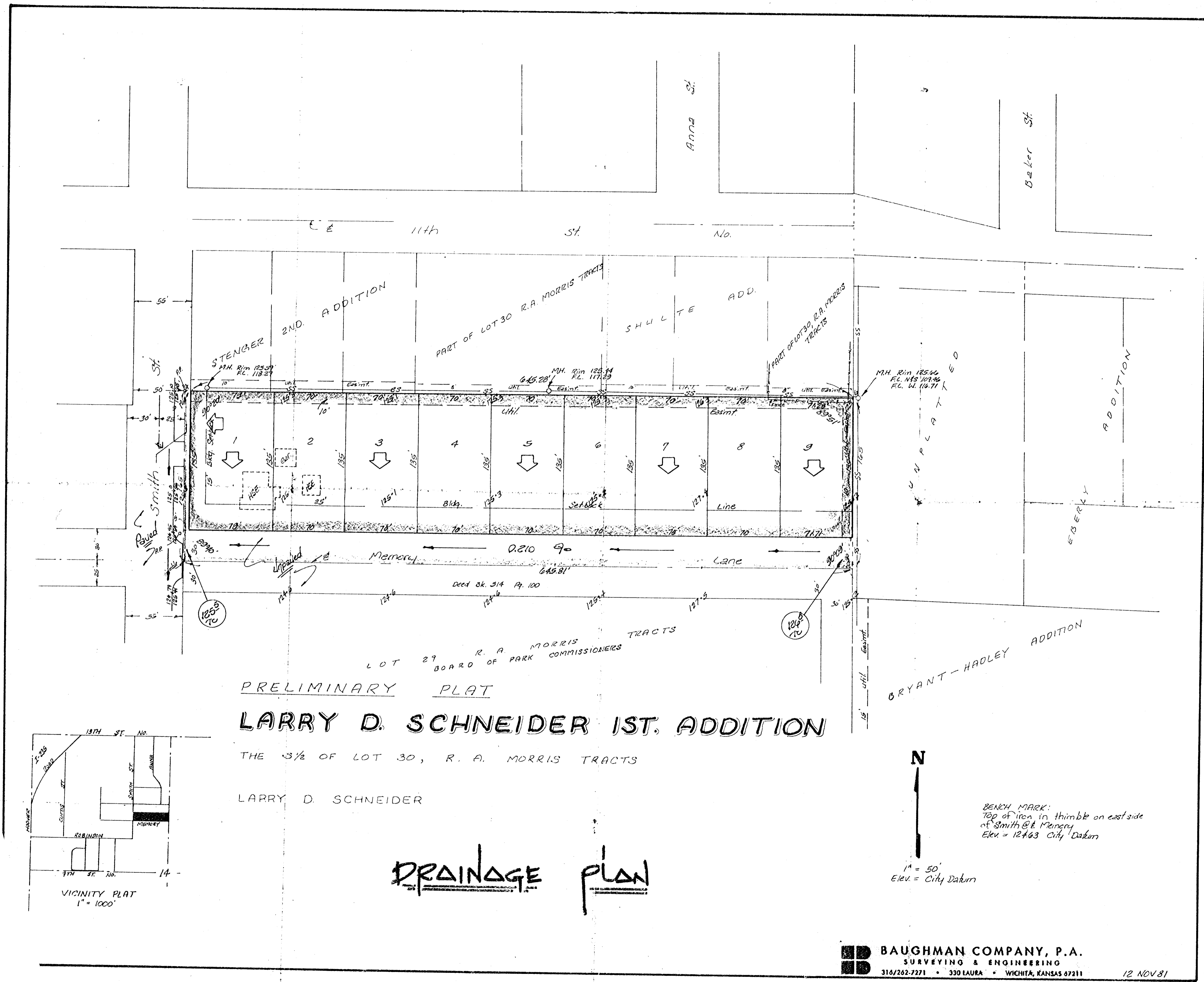
EB

THE RESIDENTIAL LOTS IN THE REFERENCED PLAN WILL DRAIN SOUTH TO MEMORY LN. AS INDICATED. MEMORY LAKE WILL BE PAVED AS REQUIRED, AND CONFORM TO THE TOP OF CURB ELEVATIONS INDICATED. MEMORY LN. WILL FLOW WEST TO SMITH AND THEN SOUTH.

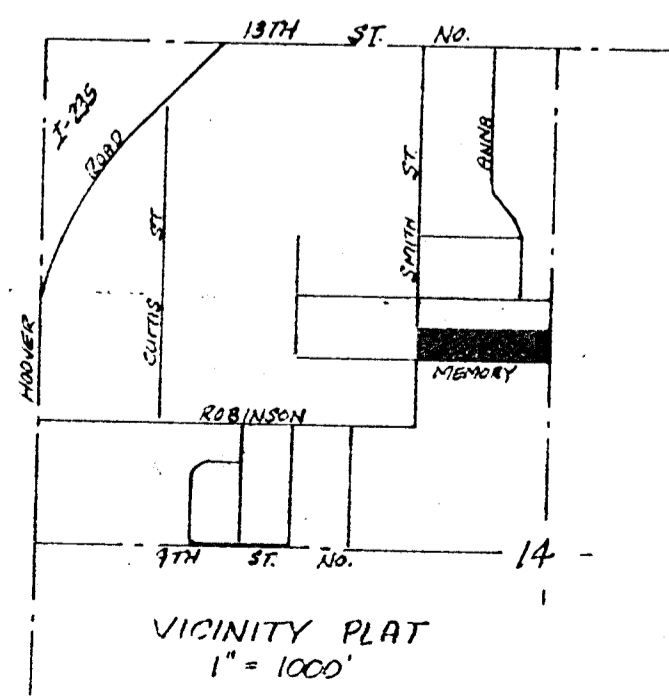
RUNOFF CALCULATIONS -

C FOR RESIDENTIAL = 0.35
I FOR MINOR STORM = 4.06 IN/HR
A = 2.0 ACRES

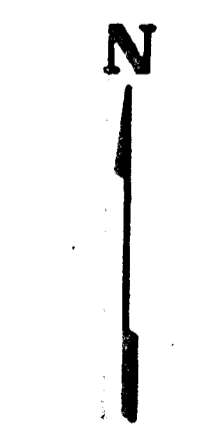
$$Q = CIA = 0.35 (4.06) (2.0)$$
$$Q = 2.8 \text{ cfs.}$$



PRELIMINARY PLAT
LARRY D. SCHNEIDER 1ST. ADDITION
 THE 3/2 OF LOT 30, R. A. MORRIS TRACTS
 LARRY D. SCHNEIDER



DRAINAGE PLAN



BENCH MARK:
 Top of iron in thumb on east side
 of Smith & E. Mercy
 Elev. = 12463 City Datum

1" = 50'
 Elev. = City Datum