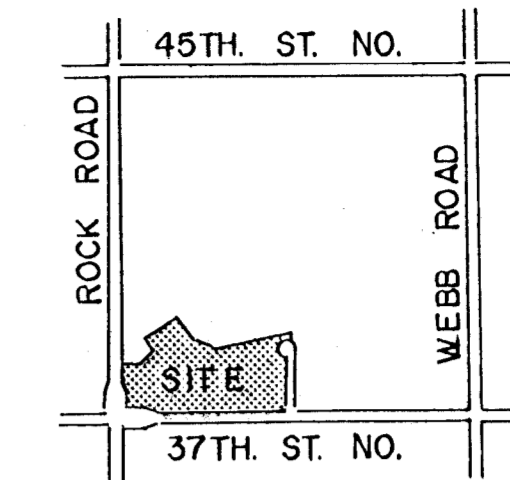


# PRELIMINARY PLAT FOR HI-TECH INDUSTRIAL PARK SECOND ADDITION

AN ADDITION TO WICHITA, SEDGWICK COUNTY, KANSAS

OCTOBER, 1985

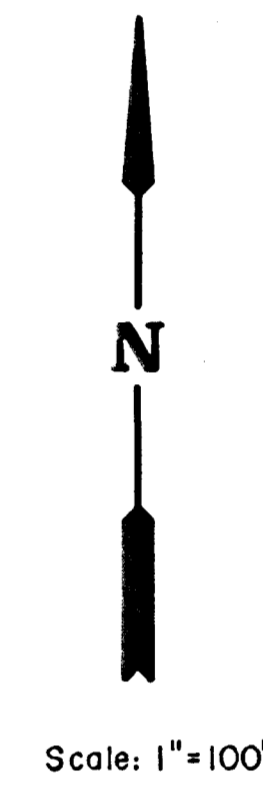
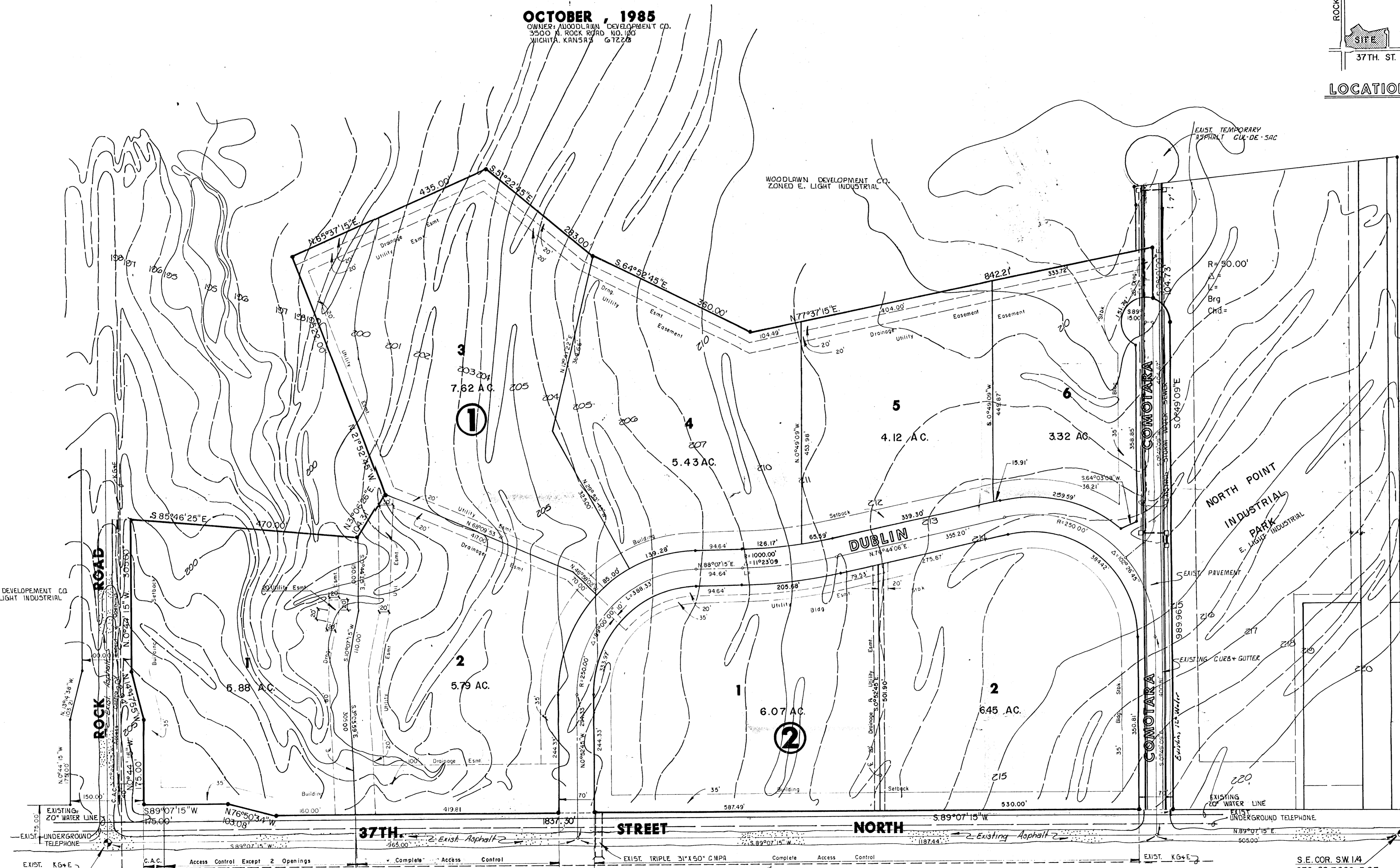
OWNER: WOODLAWN DEVELOPMENT CO.  
3500 N. ROCK ROAD, NO. 100  
WICHITA, KANSAS 67226



LOCATION MAP

*Abandon  
or revise old  
projects  
off site design  
etc.  
Paving Dublin & Tana  
Lot 15-9-83  
81441 \$332.28  
505 282  
81442 \$85.17*

*\$1500.00  
Total*



WOODLAWN DEVELOPMENT CO.  
ZONED E. LIGHT INDUSTRIAL

WOODLAWN DEVELOPMENT CO.  
ZONED E. LIGHT INDUSTRIAL

NORTH POINT  
INDUSTRIAL  
PARK  
E. LIGHT INDUSTRIAL

N. C. R. INDUSTRIAL  
E. LIGHT INDUSTRIAL  
COMOTARA

S.E. COR. SW 1/4  
SEC. 29, T.26S., R.2E.