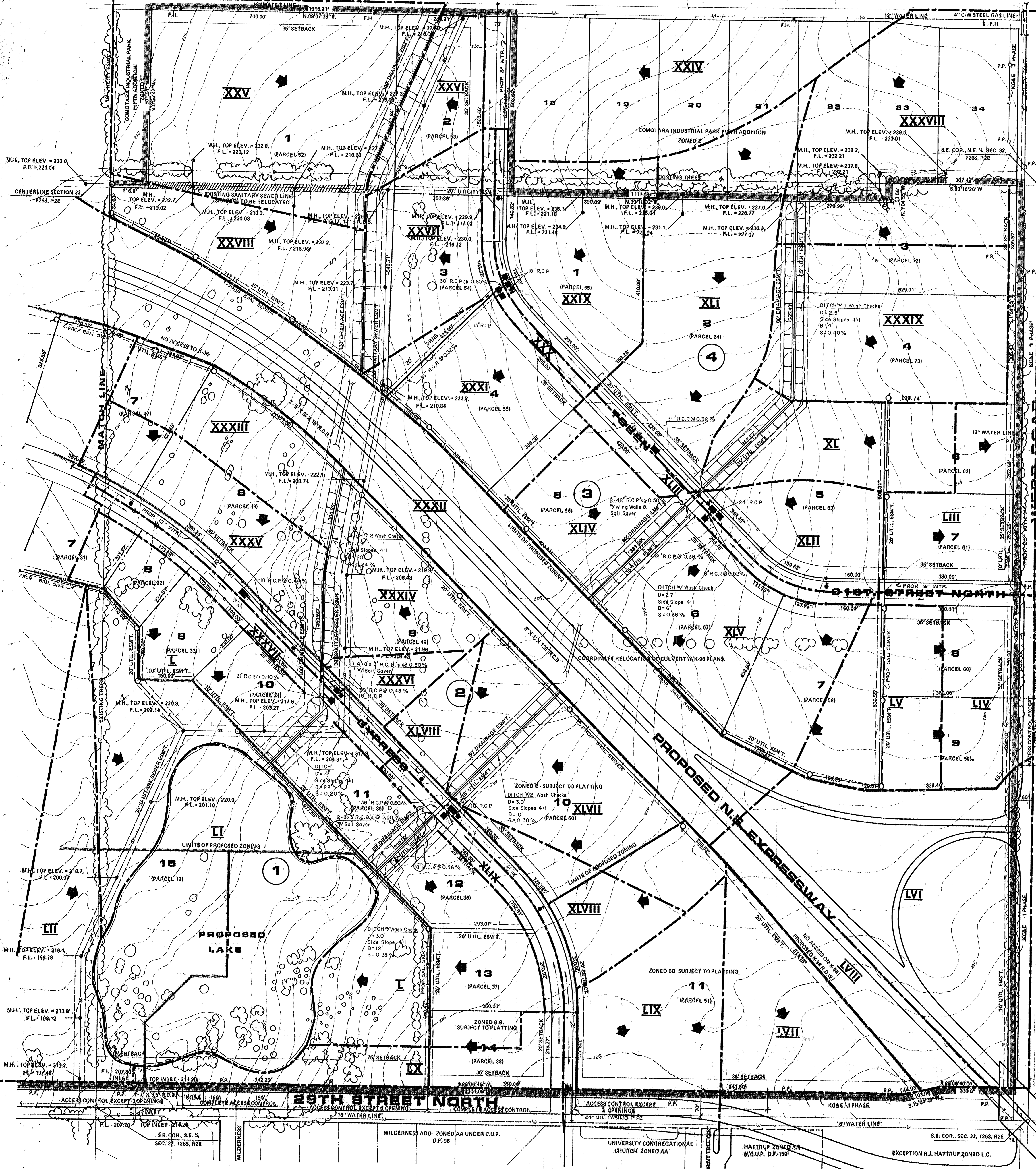


COMOTARA INDUSTRIAL PARK FIFTH ADDITION ZONED E  
**XXIV 34TH STREET NORTH**



COL. JAMES JASBARA AIRPORT ADD. ZONED E LIGHT INDUSTRIAL

WEBB ROAD

31ST STREET NORTH

29TH STREET NORTH

PROPOSED N.E. EXPRESSWAY

UNIVERSITY CONGREGATIONAL CHURCH ZONED AA

HAYTRUP ZONED AA W.C.U.P. D.P. 159

EXCEPTION R.J. HAYTRUP ZONED L.O.

DRAINAGE & UTILITY PLAN

SHEET 2 OF 2

# MEDITERRANEAN PLAZA

SCALE 1"=100'

