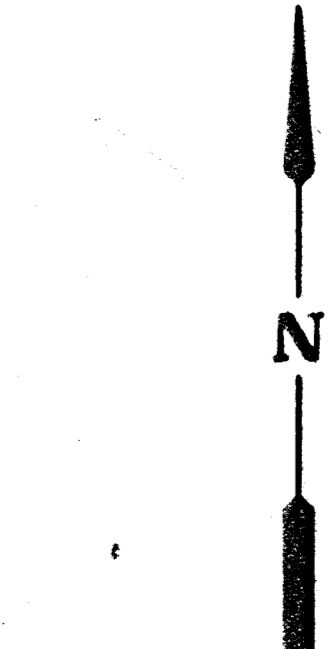
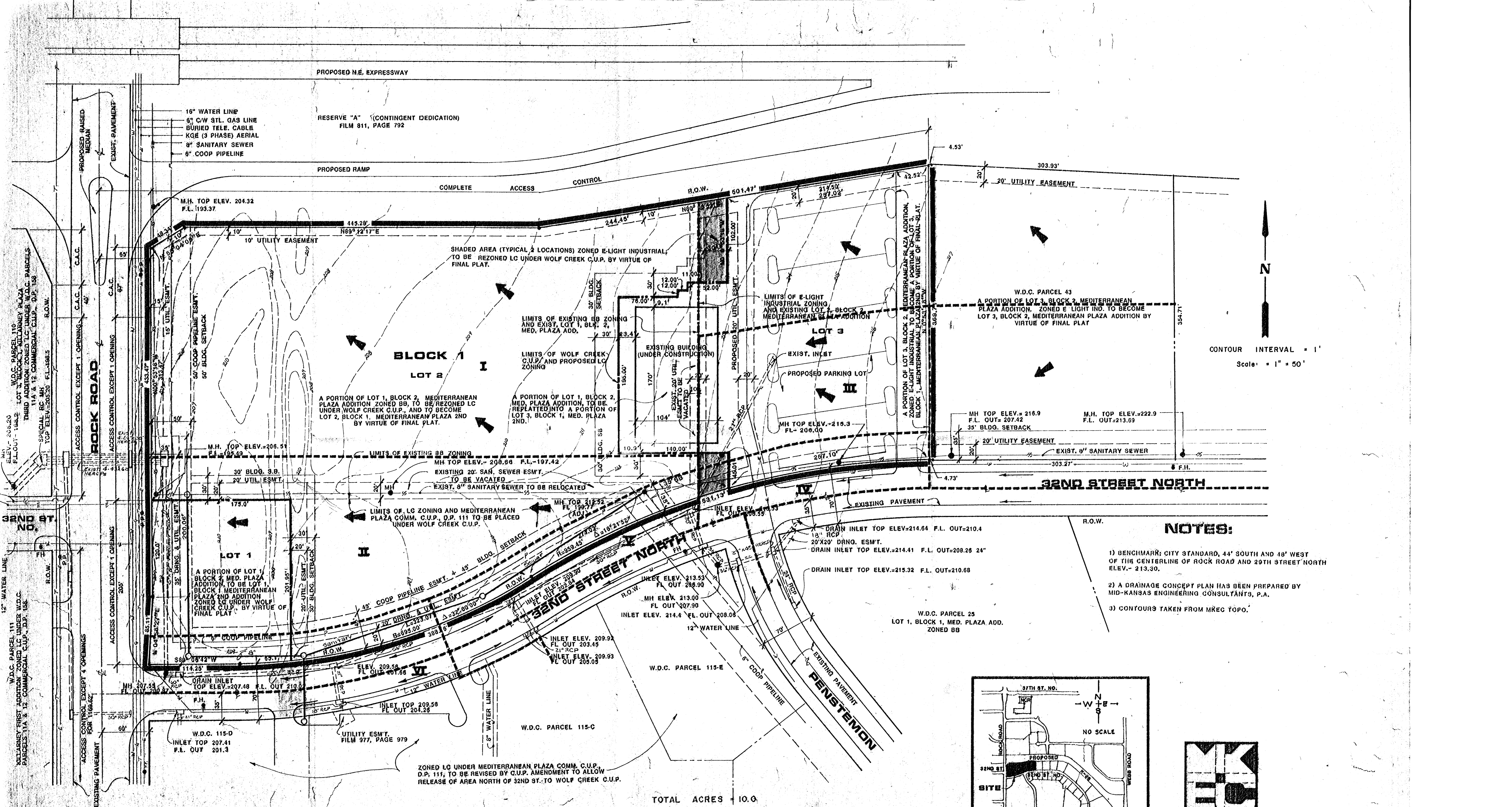


PROPOSED M.E. EXPRESSWAY

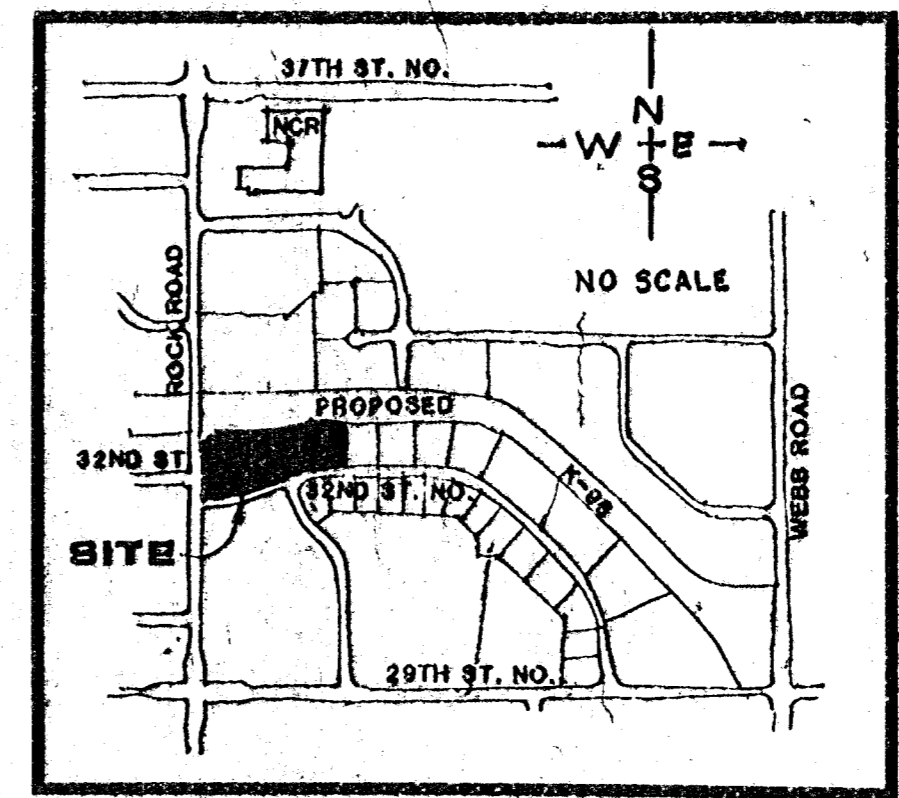
RESERVE "A" (CONTINGENT DEDICATION)
FILM 811, PAGE 792



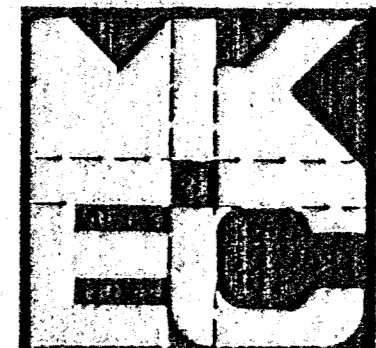
CONTOUR INTERVAL = 1'
Scale: 1" = 50'

NOTES:

- 1) BENCHMARK: CITY STANDARD, 44' SOUTH AND 48' WEST OF THE CENTERLINE OF ROCK ROAD AND 29TH STREET NORTH ELEV. = 213.30.
- 2) A DRAINAGE CONCEPT PLAN HAS BEEN PREPARED BY MID-KANSAS ENGINEERING CONSULTANTS, P.A.
- 3) CONTOURS TAKEN FROM MREC TOPO.



LOCATION MAP



MID-KANSAS ENGINEERING CONSULTANTS P.A.
3500 NORTH ROCK ROAD
BUILDING 1800
WICHITA, KANSAS 67228
636-5566

ZONED LG UNDER MEDITERRANEAN PLAZA COMM. C.U.P., D.P. 111, TO BE REVISED BY C.U.P. AMENDMENT TO ALLOW RELEASE OF AREA NORTH OF 32ND ST. TO WOLF CREEK C.U.P.

TOTAL ACRES = 10.0

**DRAINAGE CONCEPT
MEDITERRANEAN PLAZA 2ND.**