



NE Cor., NE 1/4, Sec. 7,
T27S, R2E, 6th P.M.

Drainage Concept / Plan
PRELIMINARY PLAT OF
E.E. JABES 2nd ADDITION
 WICHITA, SEDGWICK COUNTY, KANSAS.

Owner/Developer: Slowson Investment Corporation
 200 Douglas Bldg, Wichita, Ks.
 Engineer: P.E.C. 1440 English, Wichita, Ks.

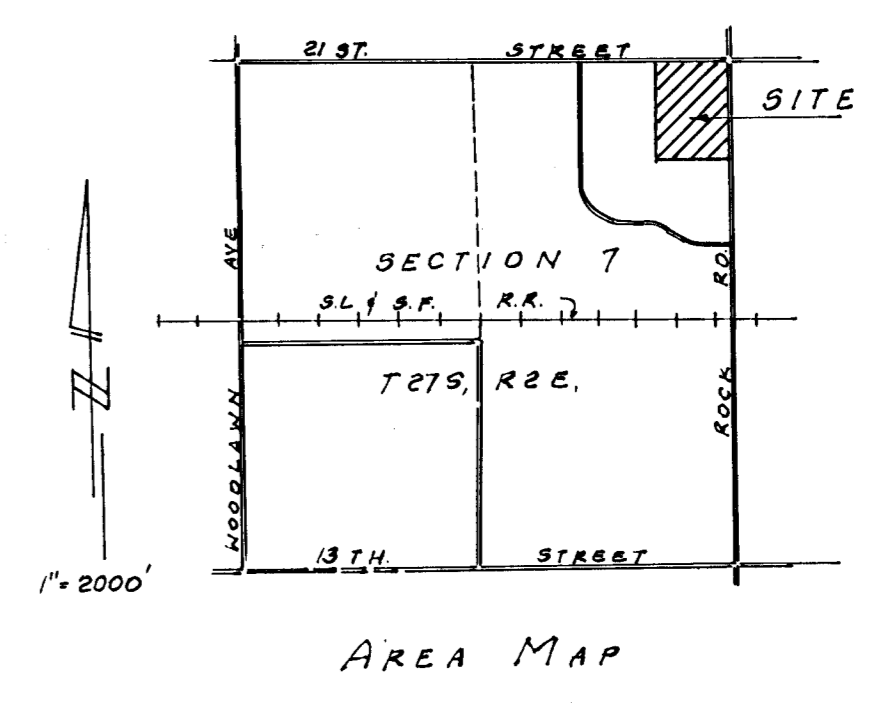
NOTE: For building setback, See C.U.P. DP-02
 Exist & Prop. Zoning of Site "L.C."

Note: Lots 1, 2, & 3 shall be graded
 to drain to streets, gutters, and/or
 storm sewers via drives, flumes,
 private storm sewers and/or other
 approved drainage facilities.

Scale 1"=400'
 Contour Interval - One foot
 Date of Survey - March 1984
 B.M. City of Wichita, B.M. disc 45, 14'
 48'E of Intersection of 21st St & 1/2
 Rock Rd. Elev. = 214.988 City Datum

E. E. JABES ADDITION

*Private Drainage
 Easements*



E 1/4 Cor., Sec. 7,
 T27S, R2E, 6th P.M.