

N 1/4 Cor., Sec. 7,
T27S, R2E, 6th P.M.

NE Cor., NE 1/4, Sec. 7,
T27S, R2E, 6th P.M.

12-38

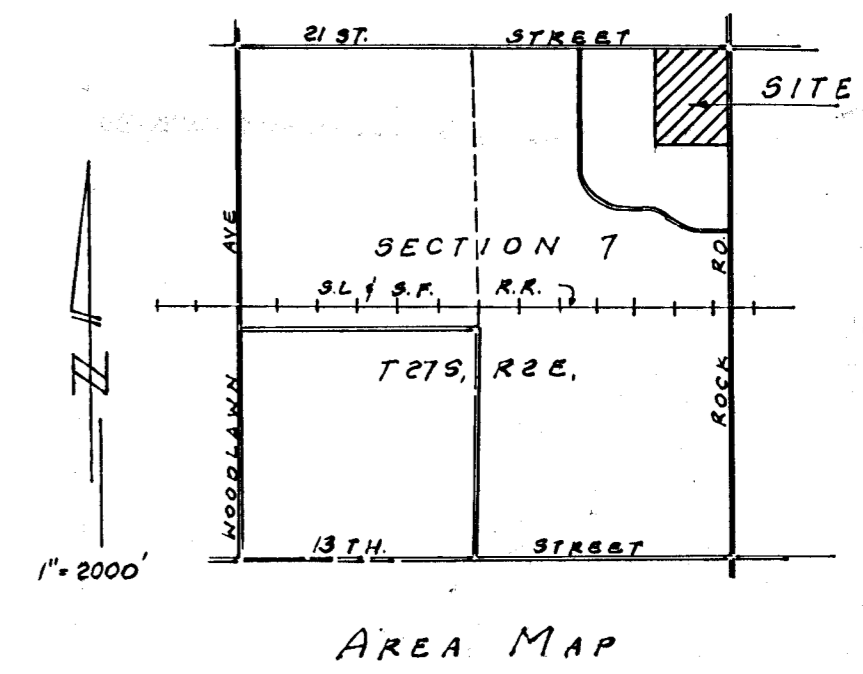
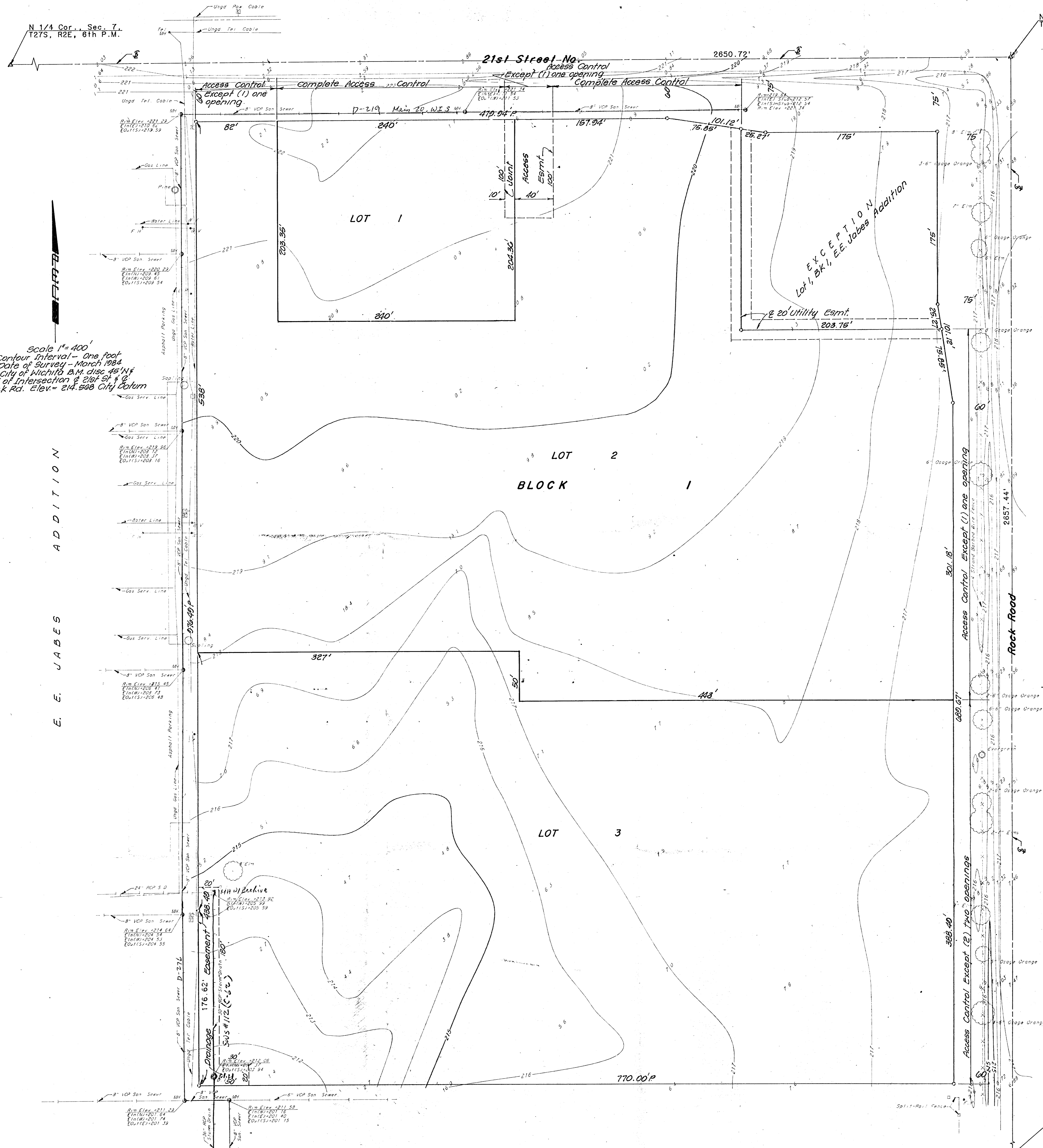
PRELIMINARY PLAT OF E.E. JABES 2nd ADDITION WICHITA, SEDGWICK COUNTY, KANSAS.

Owner/Developer: Slawson Investment Corporation
200 Douglas Bldg. Wichita, Ks.
Engineer: P.E.C. 1440 English, Wichita, Ks.

Note: For building setback, See C.U.P. DP-02
Existg Prop. Zoning of Site "L.C."

Scale 1"=400'
Contour Interval - One foot
Date of Survey - March 1984
B.M. City of Wichita B.M. disc 45' N of
48' E of Intersection of 21st St & 8th St
Rock Rd. Elev. = 214.968 City Datum

E. E. JABES
ADDITION



E 1/4 Cor., Sec. 7,
T27S, R2E, 6th P.M.