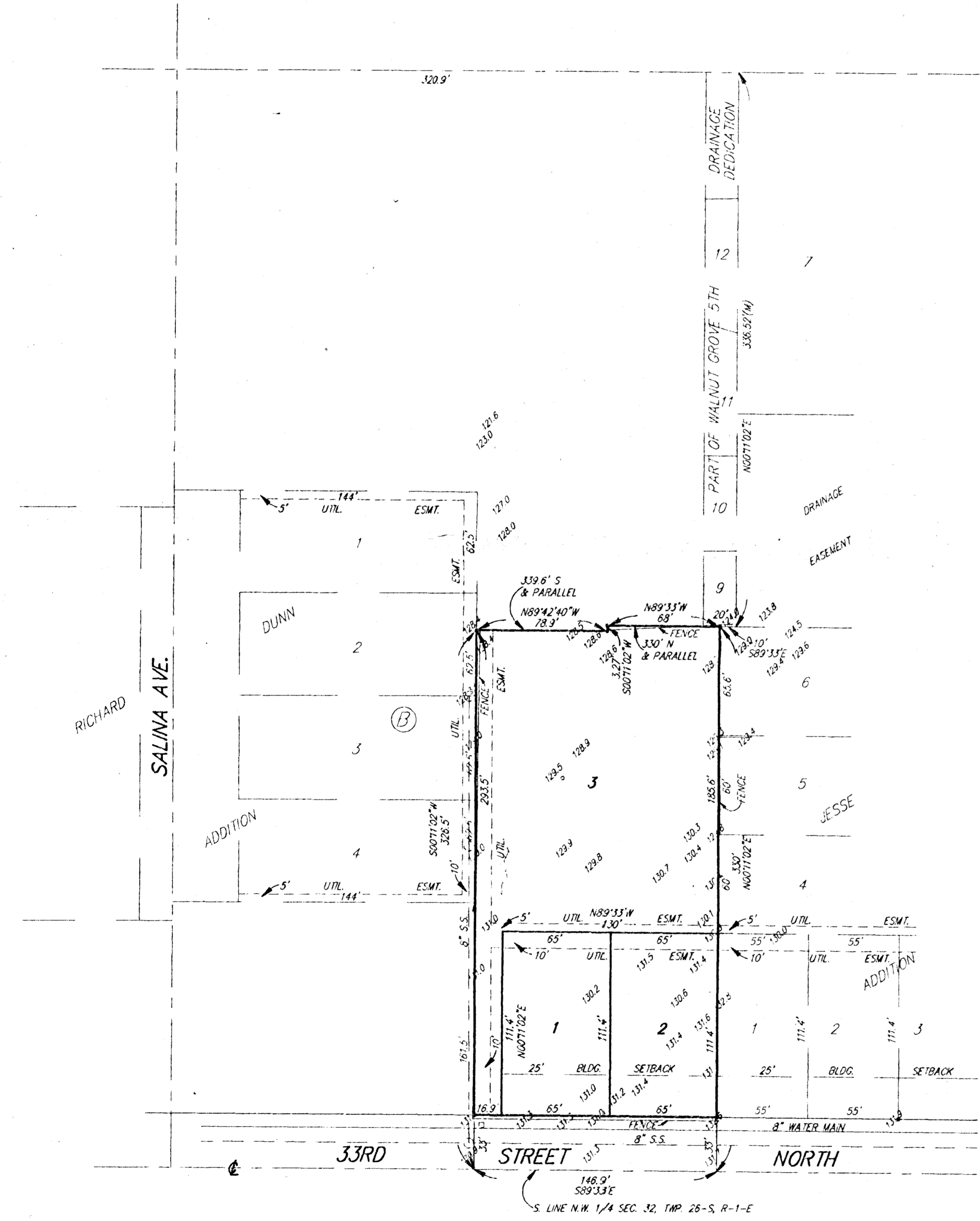


# SKETCH PLAT JESSE 2ND ADDITION

WICHITA, SEDGWICK COUNTY, KANSAS

PART OF LOT 21, WALNUT GROVE ADDITION &  
PART OF LOTS 5, 6, 7, 8, & 9, WALNUT GROVE ADDITION

RICHARD P. JESSE  
3201 WOODLAND  
WICHITA, KS 67204  
PH: 838-4565



SCALE: 1" = 50'  
R.R. SPIKE IN N.W. FACE  
OF P.P. 25' N. & 5' S. OF  
S.E. COR. LOT 1, WALNUT  
GROVE 5TH ADDITION  
ELEV. = 1153.00

22-311  
22-211