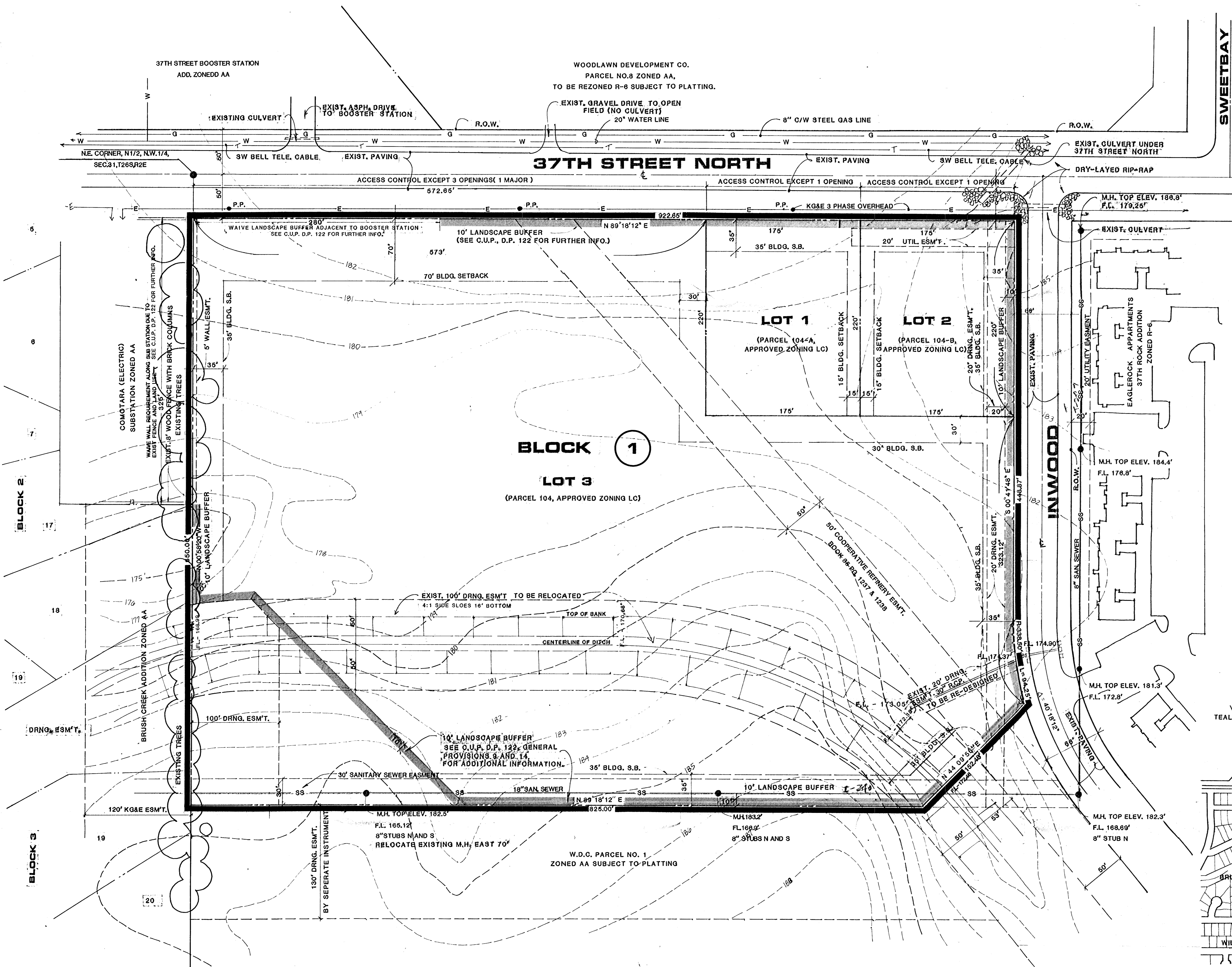


NOTES

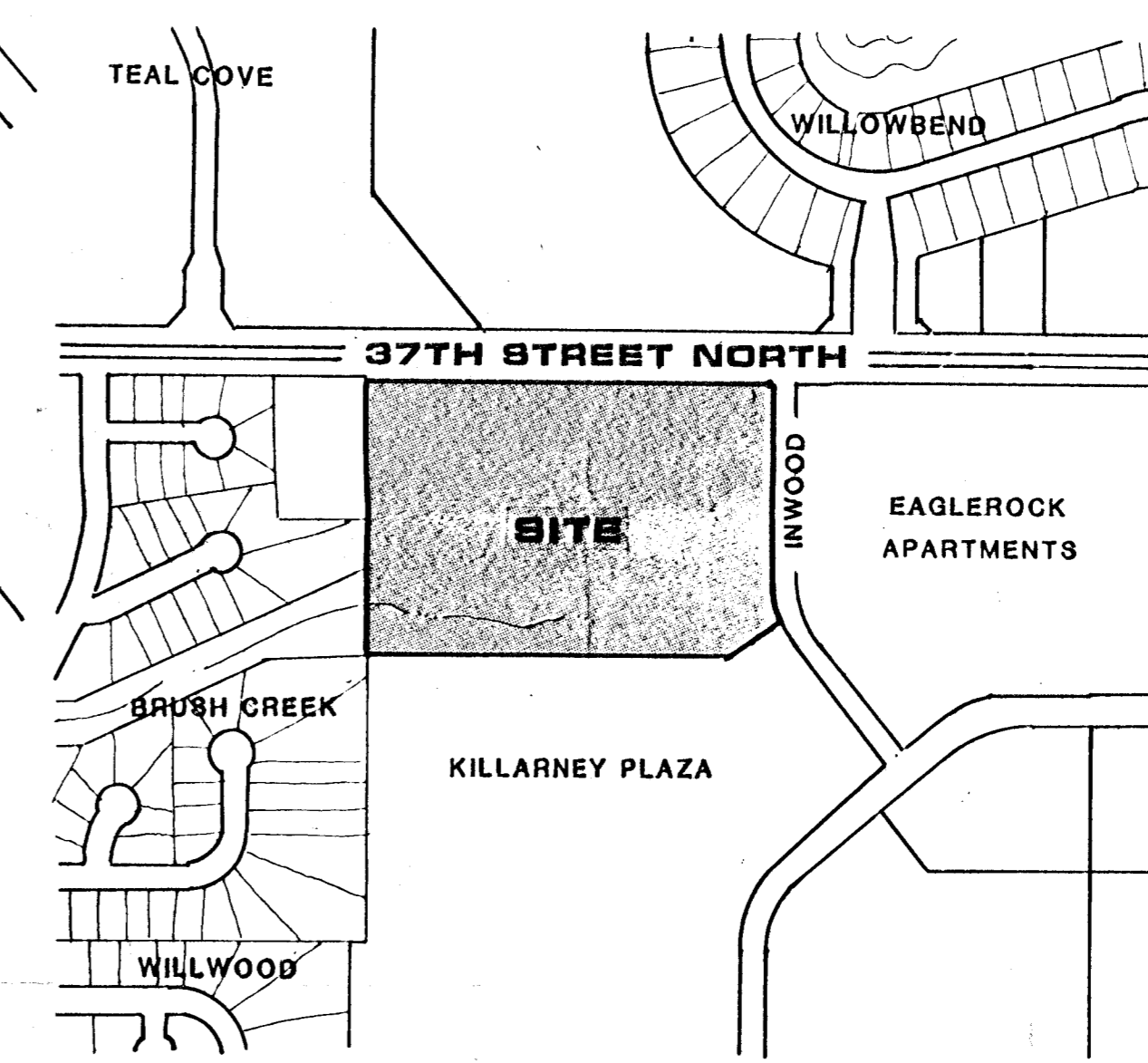
BENCHMARK:

CITY STANDARD 30' NORTH AND 34' WEST OF THE 1/4 SECTION CORNER AT 37TH STREET NORTH AND GOVERNEUR, ELEV. 185.84

A DRAINAGE CONCEPT PLAN SHALL BE PREPARED AND SUBMITTED TO THE CITY ENGINEER BY MID-KANSAS ENGINEERING CONSULTANTS.



LOCATION MAP



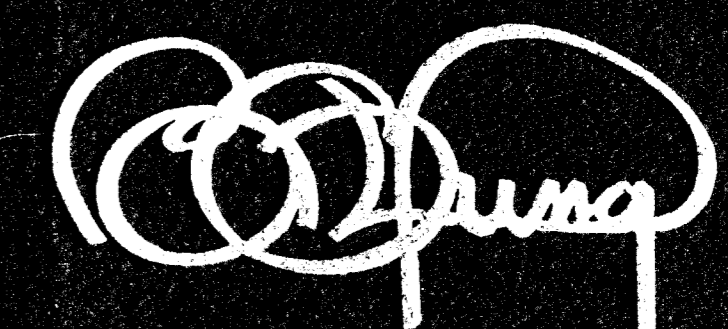
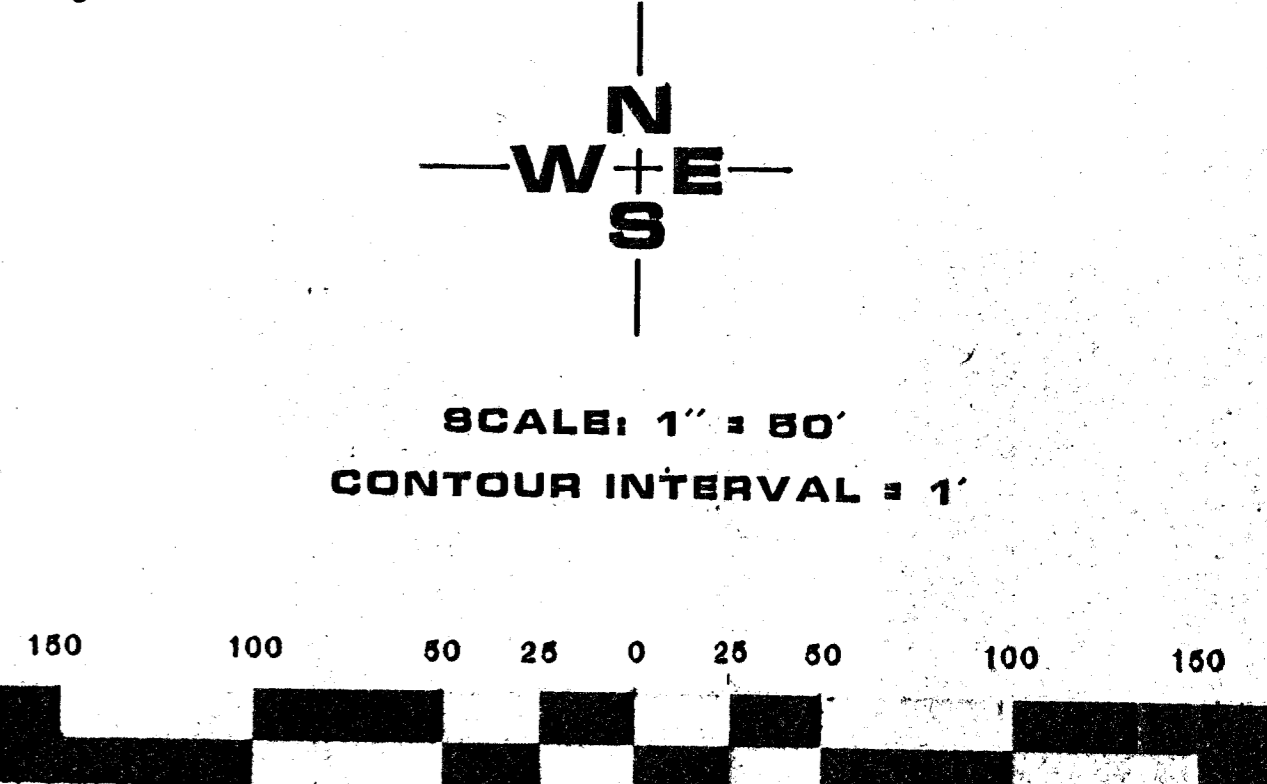
TOTAL GROSS ACRES = 13.66

PRELIMINARY PLAT (UNDER C.U.P. D.P. 122)

PARCEL NO. 104

OWNER: KILLARNEY/DEVLIN JOINT VENTURE 876 FOURTH FINANCIAL CTR. WICHITA, KS. 67202

DATE: AUG. 24, 1987



BILL G. YUNG DESIGN
4912 E. 29TH STREET NORTH WICHITA, KS 67220 316-683-5567