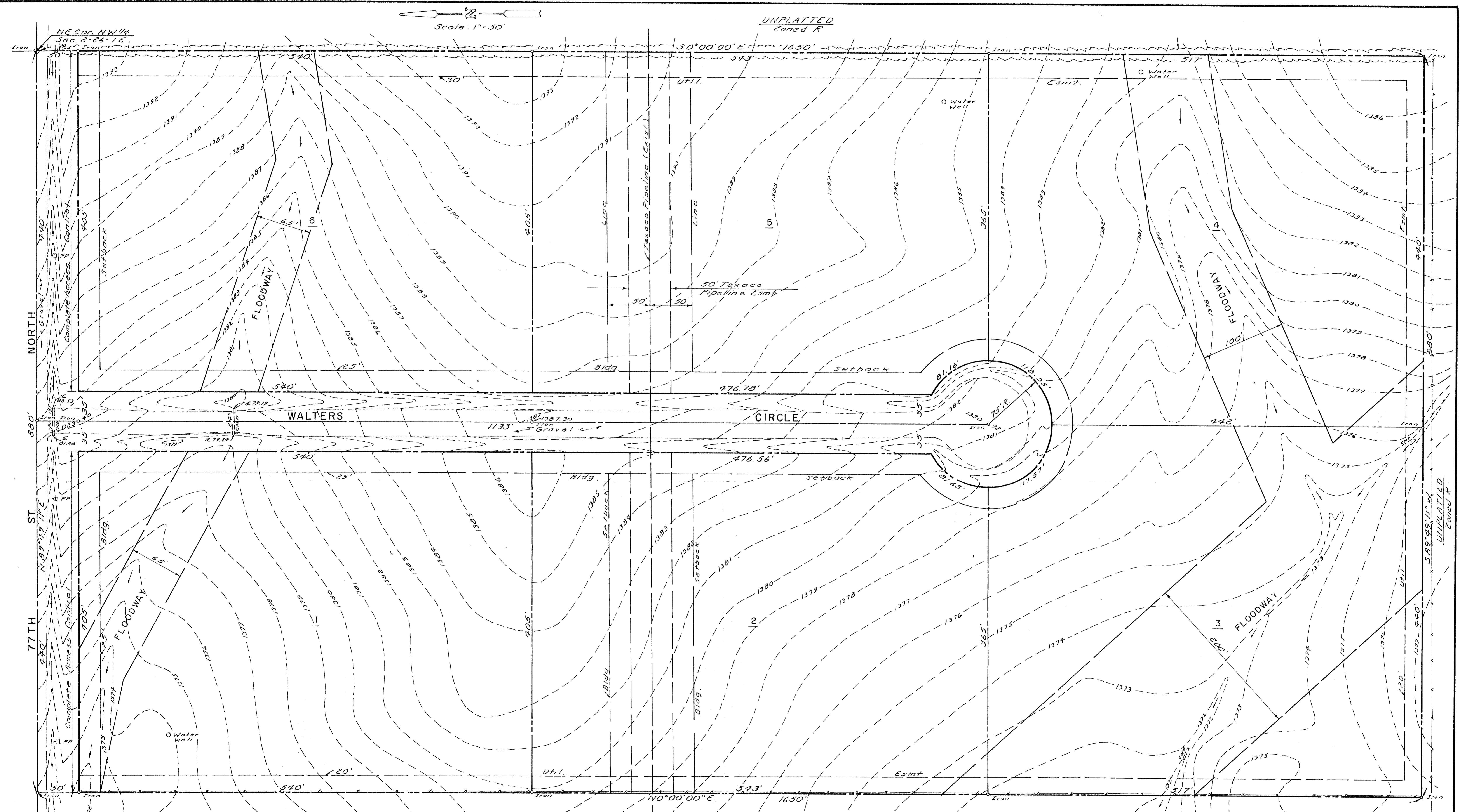


Scale: 1" = 50'

UNPLATTED  
Zoned R



- MINIMUM BUILDING PADS  
(Sea Level)
- Lot 1 - Prorated between El. 1375.1 (West Line) to El. 1392.4 (East Line)
  - Lot 2 - El. 1375.5
  - Lot 3 - Prorated between El. 1375.5 (West Line) to El. 1379.1 (East Line)
  - Lot 4 - Prorated between El. 1379.1 (West Line) to El. 1395.6 (East Line)
  - Lot 6 - Prorated between El. 1393.7 (West Line) to El. 1392.9 (East Line)

PRELIMINARY PLAT  
**PARALLEL ESTATES**  
E. 53 1/3 RDS. OF N. 100 RDS. OF NW 1/4 OF SEC. 2-26-1E  
OWNER - ESTON & DONNA ASH

B.M. RR Spk. in N. Face of PP  
So. Side 77th @ NE Cor.  
Property Elev. 1394.43  
(Sea Level)