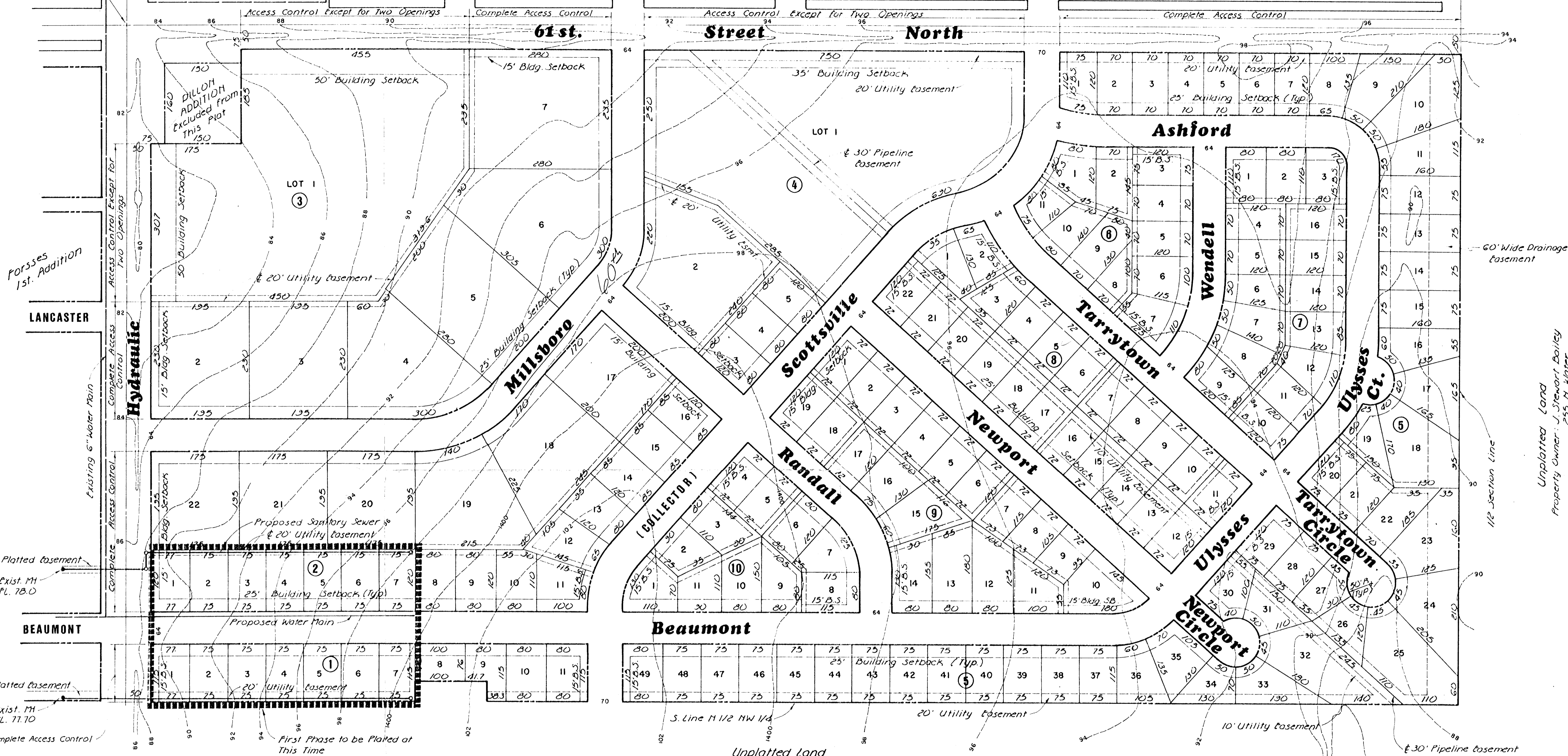


NW Cor Sec. 15-26-1E

Owen's 1st. Addition

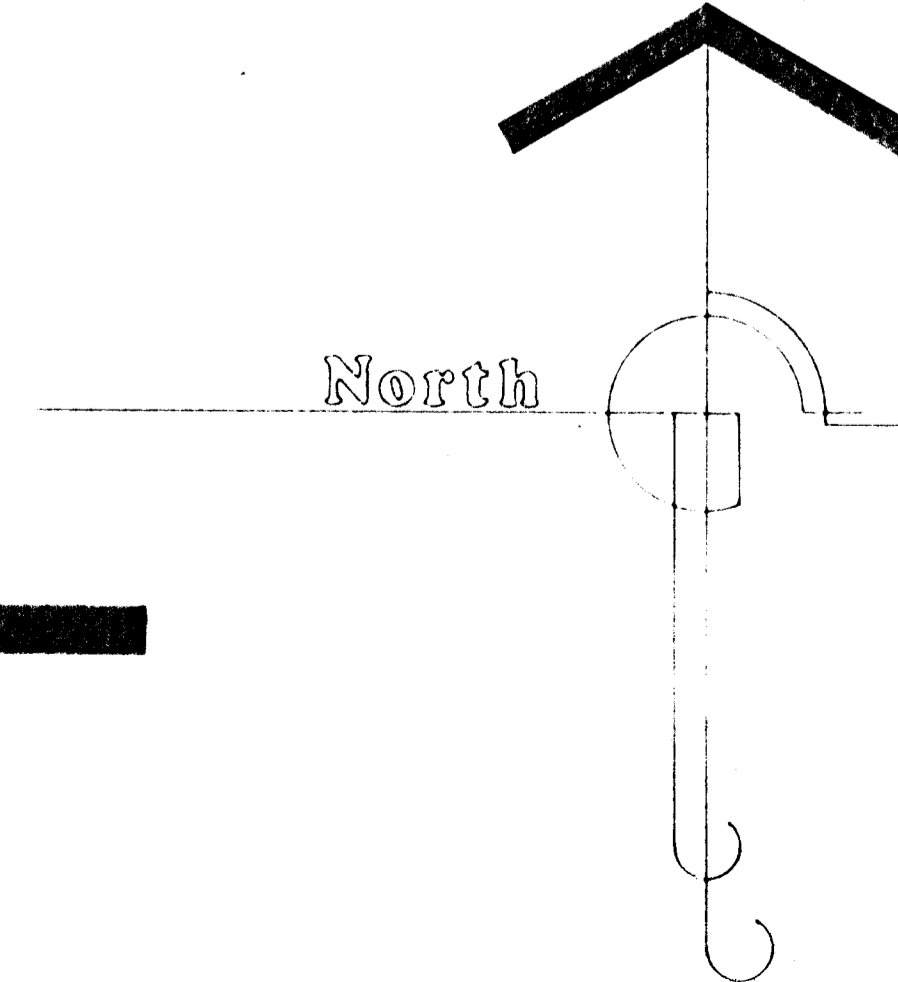
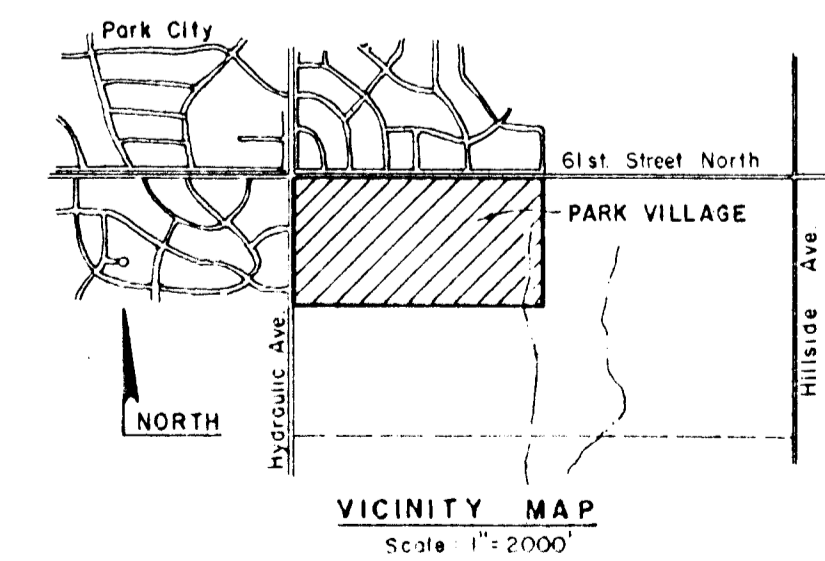
E.J. Zonker's 1st. Addition
Existing 8" Water Main



- Notes:**
- 158 Single Family Lots - 1 Light Commercial - 14 Multi-Family
 - Total Area 78.2 Acres - 48.1 Acres Single Family - 24.2 Acres Multi-Family - 5.9 Acres Light Commercial
 - 3.28 Single Family D.U.'s/Ac.
 - Zone Change Approved Subject to Platting
 - Streets, Water and Sewer will be Petitioned Thru Park City Improvement District.
 - All Easements are 20' Wide Utility Easements Unless Otherwise Noted.
 - A Final Plat will be Submitted Only in the 14 Lots Shown in the Southwest Corner.
 - Topography Survey was Completed on 11-1-54 and is on U.S.G.S. Datum
 - B.M. 1385.42 Nail in P.P. @ Kechi Road and Hydraulic

- 1
- 2
- 3
- 4
- 5
- 6
- 7
- 8
- 9
- 10
- 11
- 12
- 13
- 14
- 15
- 16
- 17
- 18
- 19
- 20
- 21
- 22
- 23
- 24
- 25
- 26
- 27
- 28
- 29
- 30
- 31
- 32
- 33
- 34
- 35
- 36
- 37
- 38
- 39
- 40
- 41
- 42
- 43
- 44
- 45
- 46
- 47
- 48
- 49
- 50
- 51
- 52
- 53
- 54
- 55
- 56
- 57
- 58
- 59
- 60
- 61
- 62
- 63
- 64
- 65
- 66
- 67
- 68
- 69
- 70
- 71
- 72
- 73
- 74
- 75
- 76
- 77
- 78
- 79
- 80
- 81
- 82
- 83
- 84
- 85
- 86
- 87
- 88
- 89
- 90
- 91
- 92
- 93
- 94
- 95
- 96
- 97
- 98
- 99
- 100

Preliminary Plat
PARK VILLAGE



Unplatted Land
Property Owner: Tom W. Patry
6151 N. Hillside

Unplatted Land
Property Owner: J. Stewart Bailey
255 N. Water

Sheet No 7 of 7 Date 1-7-100' City 2-7-73 State 1-7-100' Project No 30 778 Revisions 07
ROBERT SHELLENBERGER