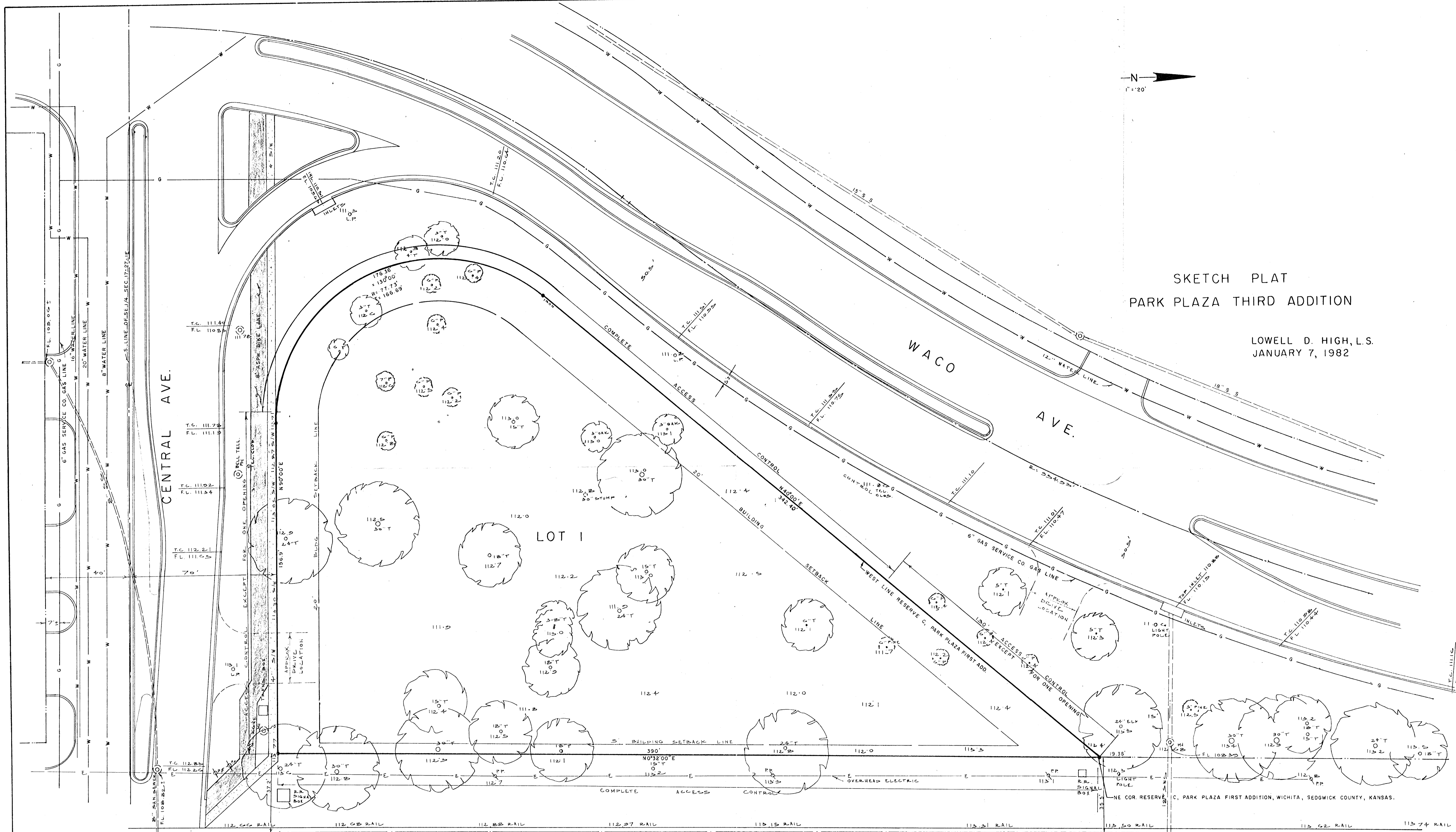


SKETCH PLAT
PARK PLAZA THIRD ADDITION

LOWELL D. HIGH, L.S.
JANUARY 7, 1982



WICHITA ST.

MO. PAC. RAILROAD

B.M. ELEV. 112.68 = E. RIM OF MANHOLE LOCATED 35' N. & 7 1/2' W.
OF THE NE COR. OF CAPTIONED PROPERTY